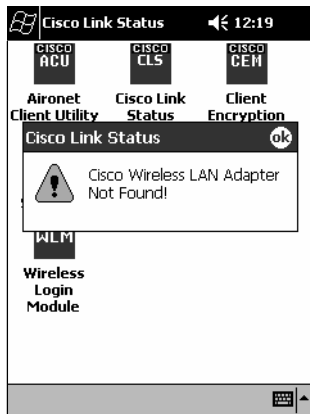


Hmm., occasionally the following screen appears after you do a suspend/resume. Should that happen, do a warm reset by pressing the I/O button for 10 seconds and everything returns to normal.

This is a known Cisco radio driver problem and should be fixed in a future release.





6001 36th Avenue West
Everett, WA 98203
www.intermec.com

© 2002 Intermec Technologies Corp.
All Rights Reserved
Cisco Radio Adapter Addendum
August 2002



962054060 REV A