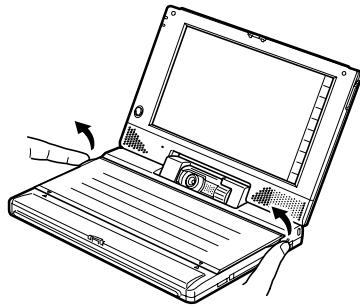
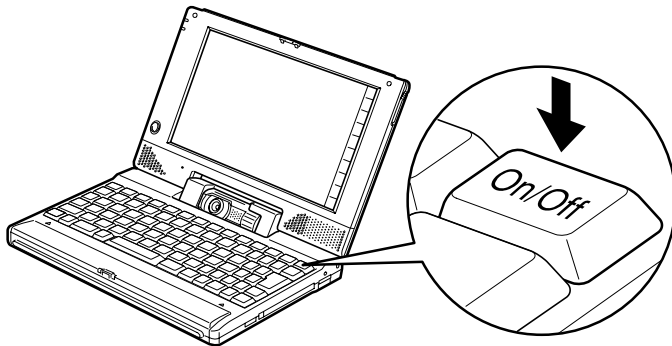



1. Remove the keyboard hard cover. Place your fingers on the left and right tabs (slightly jutting out), then gently lift up the keyboard hard cover and remove.



NOTE: Keep the keyboard hard cover, it is reusable. Replace the cover the same way you removed it.

2. Press the POWER (On/Off) key to turn on the 6651.



3. Adjust the display contrast by tapping on the brightness  icons located on the lower right side of the display, or press the **Fn** key while holding down the **←** or **→** keys on the keyboard.

4. Follow the instructions and adjust the screen calibration, time zone setting, time and date, and your name and address.

Power off the unit by pressing the POWER (On/Off) key for one second.

® Intermec is a trademark of Intermec Technologies Corporation.
 © Copyright 2000 Intermec Technologies Corporation. All rights reserved.

PN: 962-054-031
 Revision A
 July 2000

P/N 962-054-031 Revision A



Intermec

Technologies Corporation

6651 PEN COMPUTER QUICK START GUIDE

Packing List	
Quick Start Guide	P/N:962-054-031
AC Adapter/Charger	P/N:871-012-020
Serial Cable	P/N:871-012-060
Battery Pack	P/N:871-012-010
Pen Stylus	P/N:871-012-040
Keyboard Cover	P/N:871-012-050
AC Power Cable	P/N:851-036-010

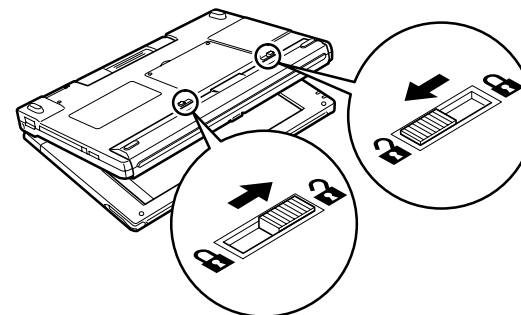
NOTE: The 6651 is shipped with a US-style power cord. Obtain an approved AC power cord locally if you need a different style plug. The mating style plug required for the AC Adapter end of the AC power cord is IEC 320-C8.

Installing and Charging the Batteries

1. Install the main battery, then the backup batteries.

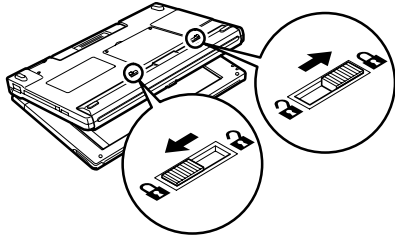
Set the device bottom side up on a cushioned surface and then open the display by lifting the center latch.

2. Slide the lock switches to the unlocked position.



3. Align the main battery pack with the rails of the 6651 and push it straight in.

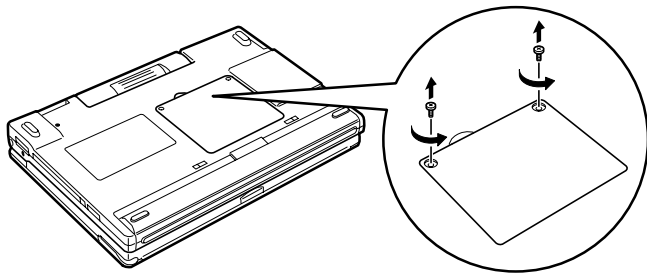
4. Slide the lock switched the locked position. If the lock switches cannot be moved, pull out the battery pack, then reinsert it.



NOTE: Both lock switches must be locked or the 6651 won't power on.

5. Close the display.

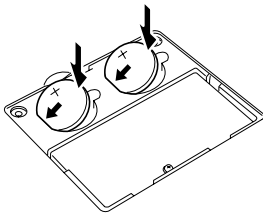
6. Remove the screws from the backup battery cover.



7. Lift up to remove the backup battery cover.

8. Install two CR2032 backup batteries with the plus (+) side up.

Slide the battery to the left and press down. Avoid touching the other parts.

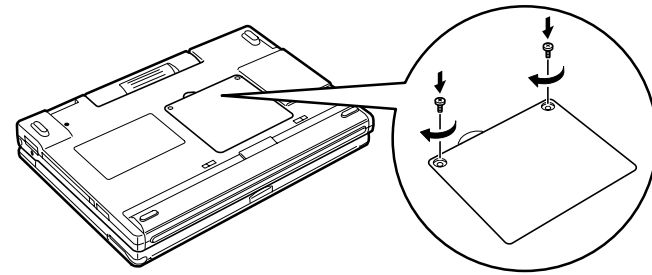


9. Replace the backup battery cover, and attach the screws.



WARNING:

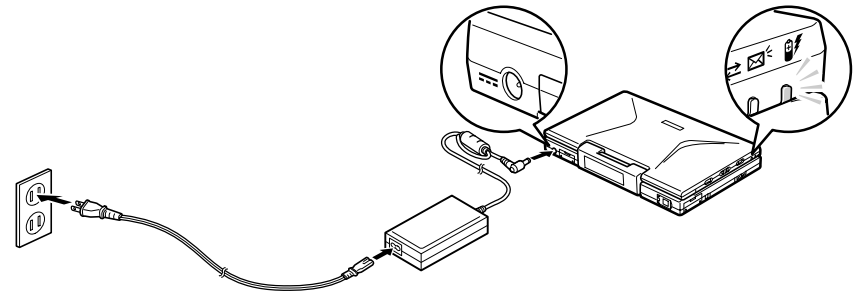
Use only the AC Adapter P/N 871-012-020 supplied with the 6651. Use of other AC adapters or AC adapter cords could result in fire or equipment damage.



10. Plug the DC power plug from AC adapter/charger into the DC input jack on the edge of the 6651. Connect the AC power cord adapter end into the AC adapter/charger first, then insert the AC plug into a wall outlet.

After a few seconds, charging starts and the orange LED on the 6651 starts blinking.

Charging time is approximately 2.5 hours. When charging is completed, the LED stops blinking, but stays lit.



NOTE: Charging can be performed while the device is in use.

NOTE: Be sure to disconnect the DC power plug from the 6651 before opening the display fully, or you could damage the DC power plug or the DC input jack.

Setting up the Device

Open the display.

Place your fingers on the tabs to the left and right of the 6651 center cover latch, and open the display.