



**Intermec**



Installation  
Instructions

**Thermal Print-  
head for  
EasyCoder F4  
and EasyCoder  
F4 Compact  
Industrial**

*Information in this manual is subject to change without prior notice and does not represent a commitment on the part of Intermec Printer AB.*

*© Copyright Intermec Printer AB, 2002. All rights reserved. Published in Sweden.*

*EasyCoder, EasyLAN, Fingerprint, and LabelShop are registered trademarks of Intermec Technologies Corp. The word Intermec, the Intermec logo, InterDriver, PrintSet, and Duratherm are trademarks of Intermec Technologies Corp.*

## Why does the printhead wear out?

The EasyCoder F4 and F4 Compact Industrial are fitted with 8 dots/mm high-performance thermal printheads. When the media is fed past the printhead, small resistor elements (dots) on the printhead are electrically charged and thereby heated. The heat from the dots is transferred to the direct thermal paper or the thermal transfer ribbon so as to form the dot pattern which makes up the text, images, or bar codes.

Printhead wear-out is an inevitable process which applies to all thermal printers regardless of brand. During printing, the dots must be heated and cooled off very rapidly, which in combination with mechanical abrasion sooner or later will wear out the printhead, making the printout gradually weaker. Some dots may even cease to produce any imprint.

## Simple precautions

Some simple measures can be taken by the user to prevent premature wear-out:

- Clean the printhead regularly, as described in the User's Guide. Not only will a dirty printhead produce an inferior printout, but any residue on the dots will prevent heat to dissipate through the media.
- Follow the recommendations regarding Paper Type setup in the User's Guide. Too much energy to the printhead will wear it out rapidly.
- Do not use higher Print Speed setting than necessary.
- Low ambient temperature requires more energy to the printhead dots than room temperatures and will therefore cause more wear to the printhead. High print speed accelerates the wear. Thus, at low temperatures, select as low a print speed as acceptable.
- Do not use a higher Contrast setting than necessary, especially not in combination with the highest Label Constant or Ribbon Constant settings.
- Do not use a higher printhead pressure than necessary.
- Never print outside the media path. Dots that are not in contact with the media will not be cooled properly.

## Simple precautions, cont.

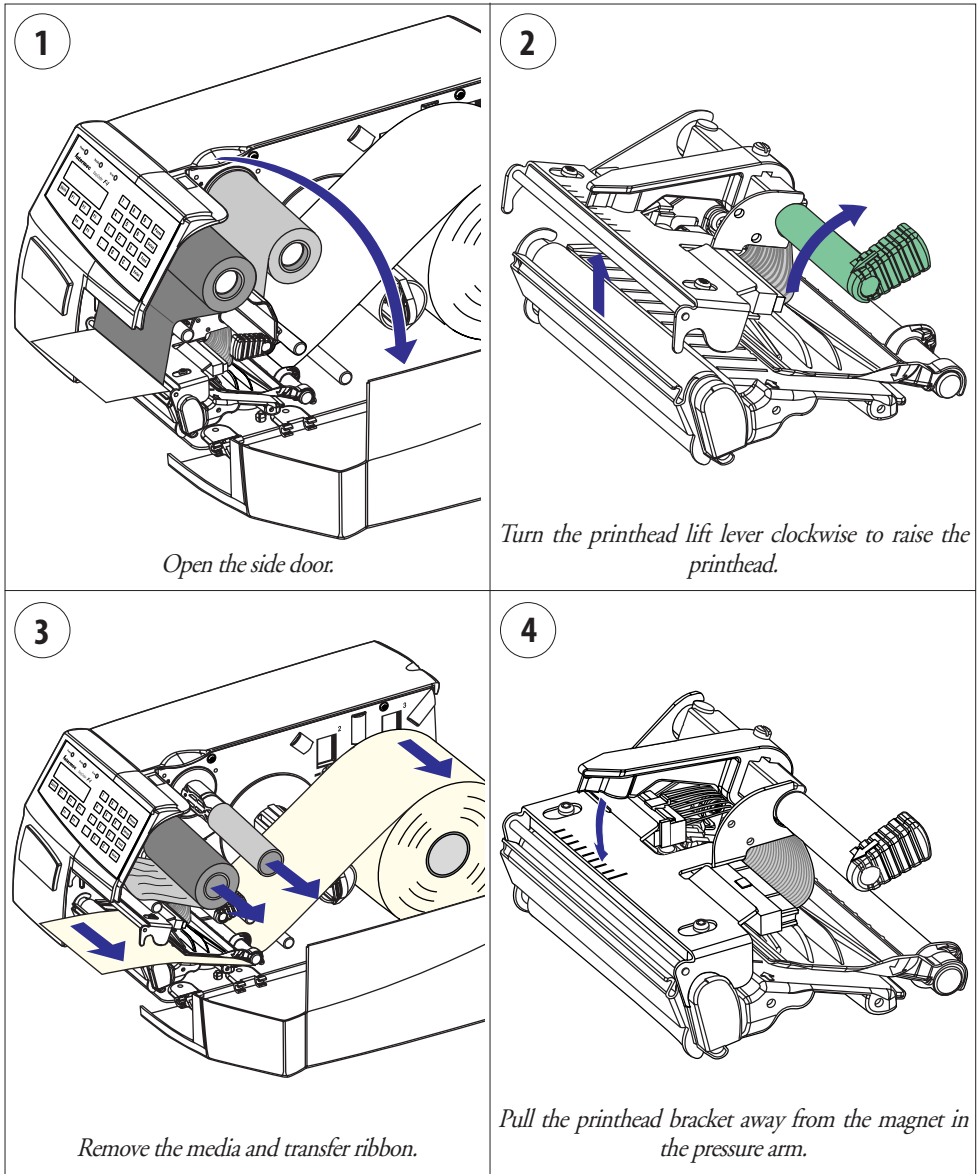
- When using media with less than full width, be careful to adjust the printhead lift arm so there is an even pressure across the media. Not only will an uneven pressure impair the printout quality, but it may also prevent the dots from being properly cooled. Moreover, a sharp outer media edge in direct contact with the printhead may cause excessive mechanical wear on some dots, which may be visible when printing on wider media later.
- When using preprinted labels or labels with some type of varnish or non-standard top coating for direct thermal printing, use original Intermec labels or inks recommended by leading manufacturers of direct thermal media. The labels must not contain any aggressive substances such as chloride or grinding substances such as titanium dioxide.
- Only use original Intermec transfer ribbons or ribbons recommended by Intermec.

This Installation Instruction booklet illustrates an EasyCoder F4 printer. For an EasyCoder F4 Compact Industrial, the installation procedure is the same printer even if the appearance of some parts differ. If the printer is fitted with an optional printhead spring (EasyCoder F4 only), the spring must be removed to allow the printhead to be pulled out and refitted after the replacement printhead has been installed.

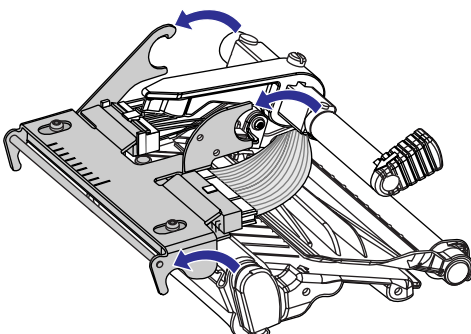
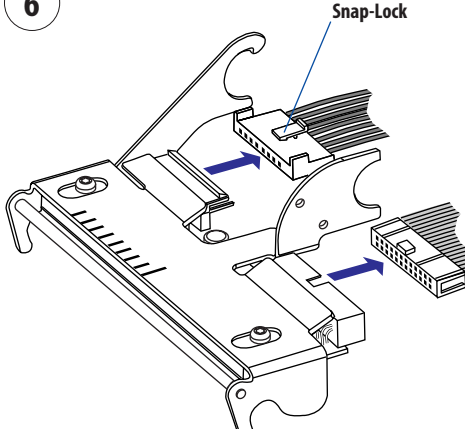
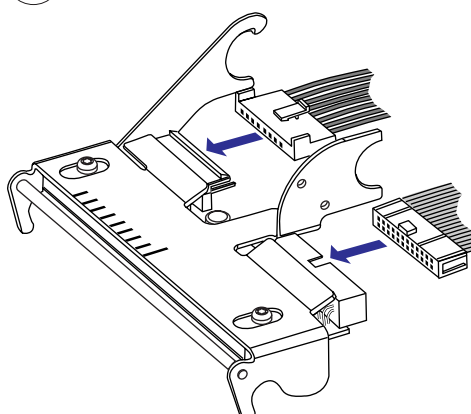
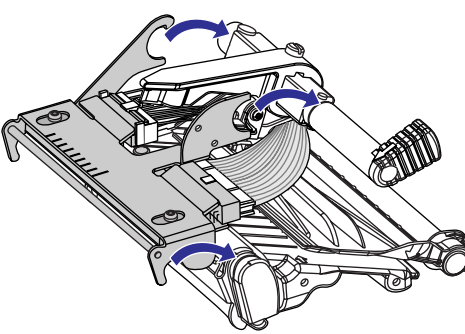
***Caution!***

*Always switch off the power while replacing the printhead. The printer must be restarted before it automatically resets itself for the characteristics of the new printhead.*

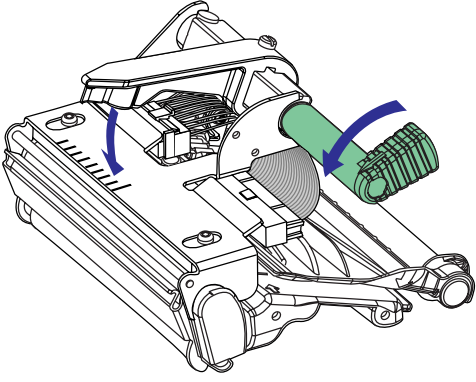
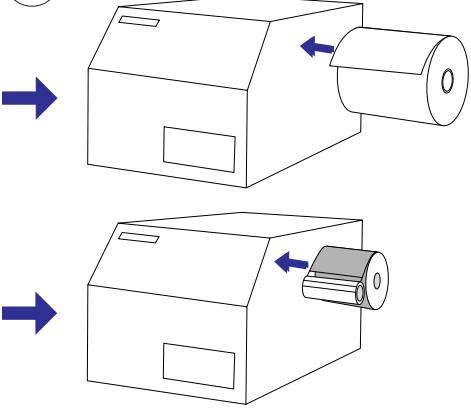
## Step-by-Step Instructions



## Step-by-Step Instructions, cont.

<p>5</p>  <p><i>Disconnect the printhead bracket from the print mechanism as indicated by the arrows and pull out the printhead as far as the cables allow.</i></p>	<p>6</p>  <p><i>Disconnect the cables from the printhead. Note the snap-lock on the inner connector. Pull at the connectors—not at the cables!</i></p>
<p>7</p>  <p><i>Connect the two cables to the replacement printhead.</i></p>	<p>8</p>  <p><i>Put back the printhead in reverse order and check that the printhead cables run freely.</i></p>

## Step-by-Step Instructions, cont.

<p><b>9</b></p>  <p><i>Turn the printhead lift lever counterclockwise so the magnet engages the printhead bracket.</i></p>	<p><b>10</b></p>  <p><i>Load a new supply of media and ribbon, as described in the User's Guide</i></p>
--	---



**Intermec Printer AB**  
Idrottsvägen 10, P.O. Box 123  
S-431 22 Mölndal, Sweden  
**tel** +46 31 869500  
**fax** +46 31 869595  
[www.intermec.com](http://www.intermec.com)

Thermal Printhead for EasyCoder F4 & F4 Compact Industrial, Installation Instructions



\*1-960479-02\*