

UBI Windows Driver – Installation Instructions

INTRODUCTION

UBI Windows Driver v. 1.4 requires the following types of configuration EPROMs to be installed in the printer:

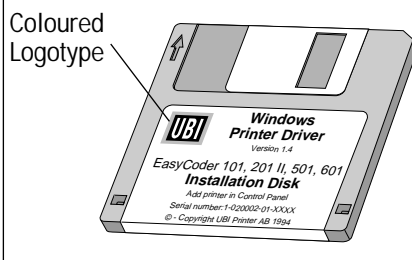
EasyCoder 101, 201 II, 501 & 601	
EasyPak	790,072,03 →
EasyPak Enhanced	790,073,03 →
UBI Shell	790,070,03 →
UBI Shell Enhanced	790,071,03 →

The *UBI Windows Driver* makes it possible to use an *UBI EasyCoder 101, 201 II, 501* or *601* printer for producing printouts from most programs run under *Microsoft Windows 3.1* or later versions. The *EasyCoder* printer must be fitted with either an *EasyPak Start-Up* program or *UBI Shell* (version requirements, see note).

You can edit your labels in word-processing programs like *MS Word*, in desktop publishing programs like *Aldus Pagemaker*, in spreadsheet programs like *MS Excel*, or in drawing programs like *Corel Draw*. Or use *Windows* built-in facilities *Write*, *Notepad*, and *Paintbrush*.

It is easy to get started. Just install the *UBI Windows Driver* in your PC and connect the printer to a parallel communication port. Then you are ready to print by means of the print facilities in the program you will use.

The *UBI Windows Driver* is delivered on a 3.5" floppy disk and contains driver routines for *EasyCoder 101*, *EasyCoder 201 II*, *EasyCoder 501*, and *EasyCoder 601* with various printhead densities. (The driver for *EasyCoder 71* is delivered on a separate floppy disk).



License and Copyright:

The floppy disk should be labelled with the *UBI* logotype printed in four colours, which indicates that the floppy disk is an original, authorized copy from *UBI*. The program is protected by copyright.

The license is for use on one single computer at a time. You are allowed to make copies for backup purpose only.

Information in this manual is subject to change without prior notice and does not represent a commitment on the part of UBI Printer AB.

© Copyright UBI Printer AB, 1994. All rights reserved. Published in Sweden.

EasyCoder, LabelShop and EasyPak are trademarks of United Barcode Industries (UBI).

Centronics is a registered trademark of Centronics Data Computer Corp.

Corel Draw is a trademark of Corel Systems Corporation
Microsoft, MS, and MS-DOS are registered trademarks of Microsoft Corporation.

Pagemaker is a registered trademark of Aldus Corporation.
Windows is a trademark of Microsoft Corporation.

*UBI Windows Driver
Installation Instructions
Edition 2, April 1994
Article No. 1-960329-01*

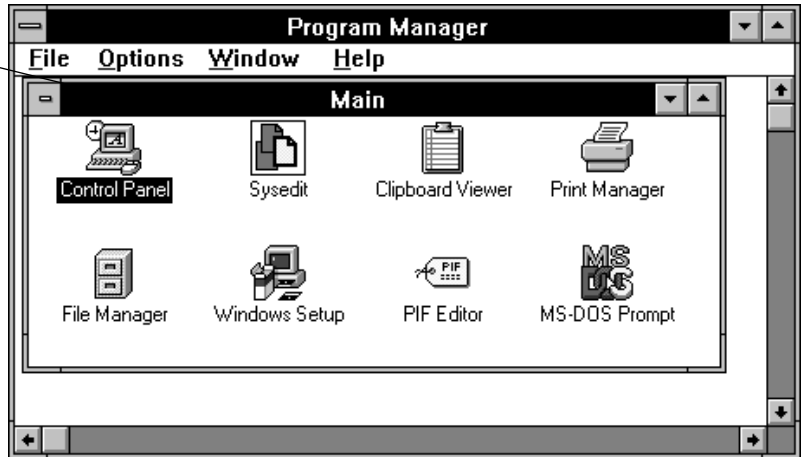


UBI Windows Driver – Installation Instructions

STEP-BY-STEP INSTRUCTIONS

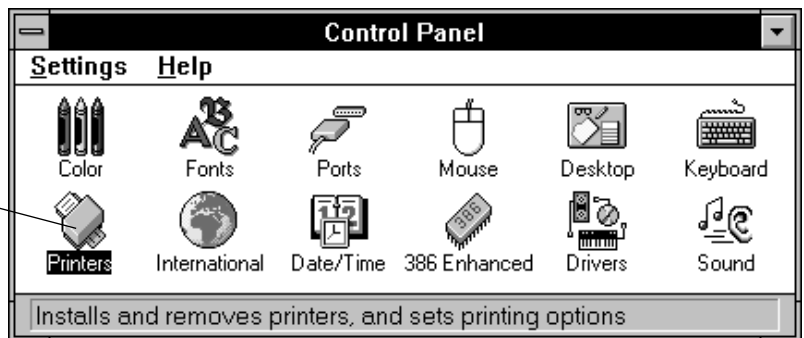
- ❑ Open *Microsoft Windows*.
- ❑ In the “*Main*” window the “*Program Manager*”, open the “*Control Panel*” option by double-clicking the icon.

Control Panel icon



- ❑ In the “*Control Panel*” window, open the “*Printers*” option by double-clicking the icon.

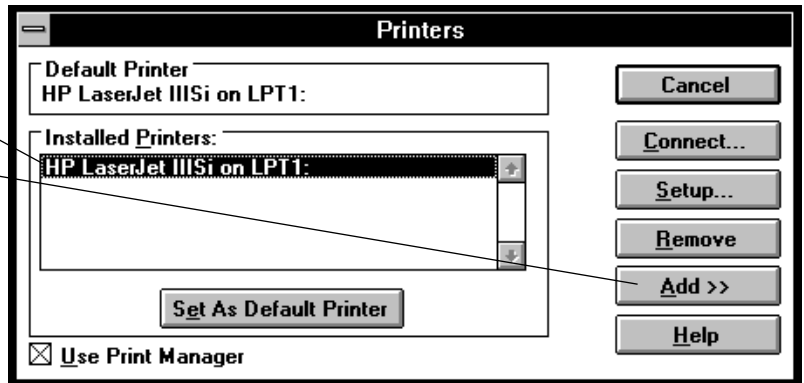
Printers icon



- ❑ The “*Printers*” window shows the printer drivers already installed^{1/}. To install a new driver, click the “*Add>>*” button.

List of installed drivers

Add button



^{1/}. If an earlier version of the UBI Windows Driver for the printer model in question already is installed, remove it before installing the new version:

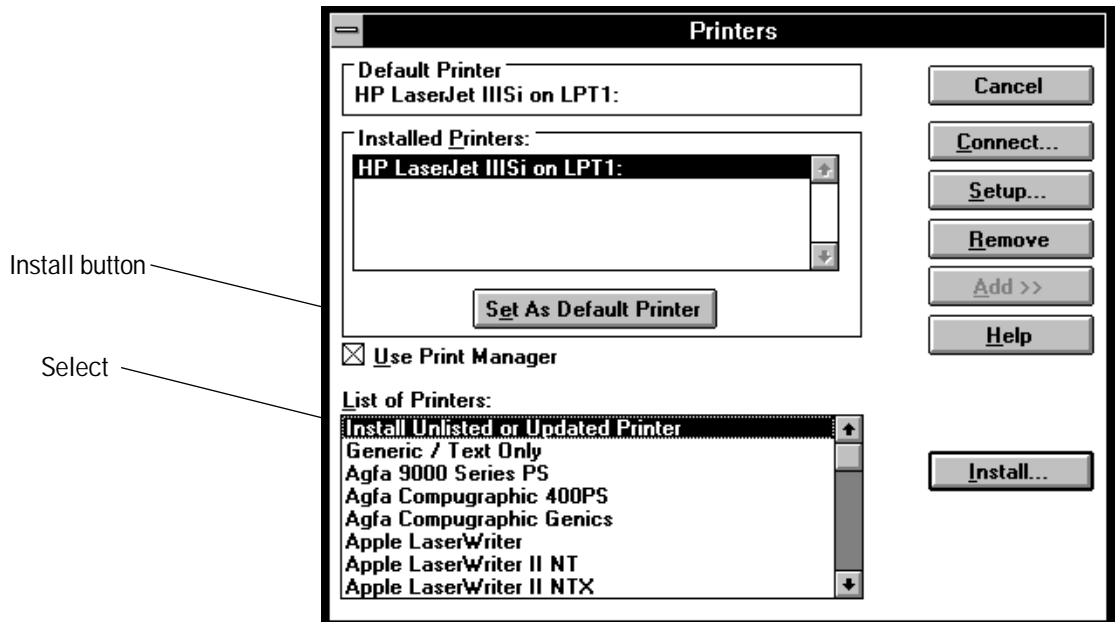
- If the printer driver is set as “*Default Printer*”, set another printer as default.
- Select the printer driver to be removed and click the “*Remove*” button.

Continued!

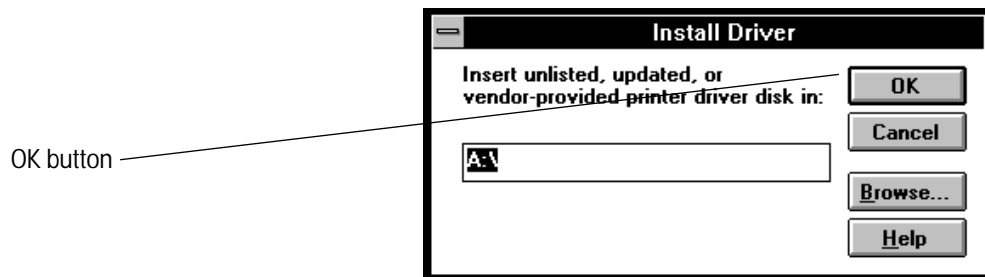
UBI Windows Driver – Installation Instructions

STEP-BY-STEP INSTRUCTIONS, cont'd.

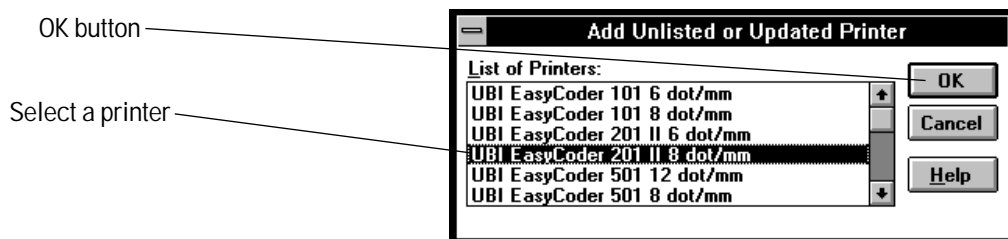
- ❑ In the “*List of printers*”, select the “*Install Unlisted or Updated Printer*” option, then click the “*Install*” button.



- ❑ By default, the “*Install Driver*” window will select the directory “*A:*”. Insert the *UBI Windows Driver* floppy disk in drive A and click the “*OK*” button.



- ❑ A list of *EasyCoder* printer drivers will appear. In the “*List of printers*”, browse through the list and select the appropriate driver for your *UBI EasyCoder* printer (in this case *EasyCoder 201 II 8 dot/mm*). Then click the “*OK*” button.

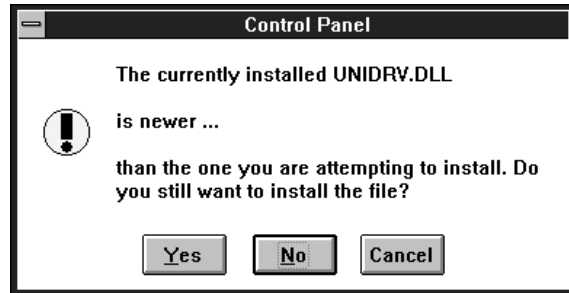


Continued!

UBI Windows Driver – Installation Instructions

STEP-BY-STEP INSTRUCTIONS, cont'd.

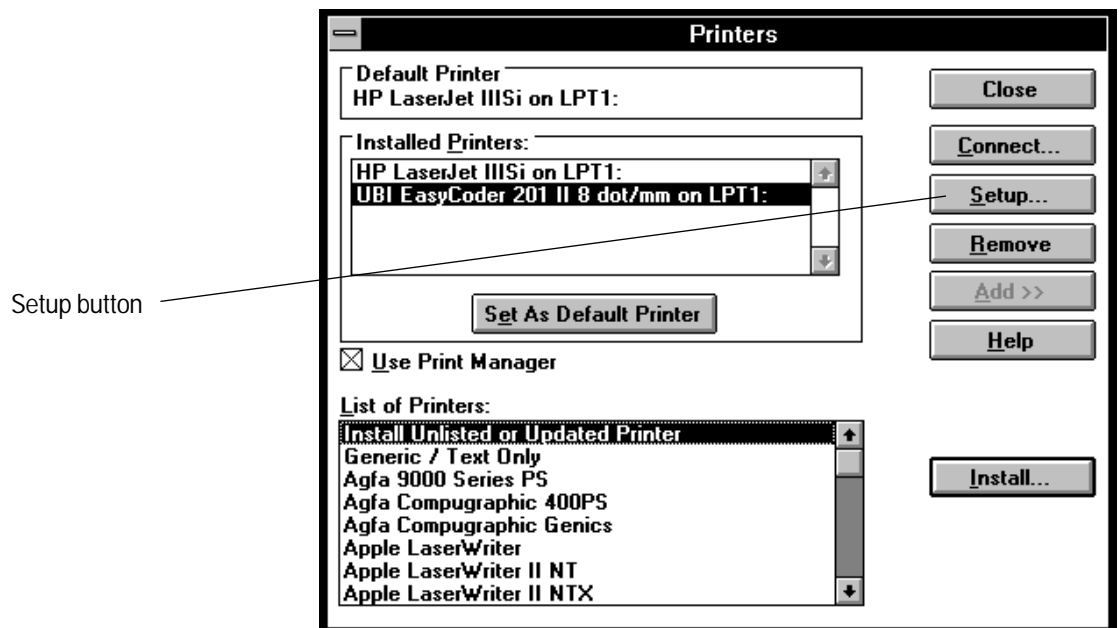
- ❑ If the UNIDRV.DLL file installed in your PC is newer than the version included in the *UBI Windows Driver*, a dialogue box will appear:



Always answer “*No*”. Else, problems may occur when using other types of printers.

- ❑ The “*Printers*” window will be displayed again, now with the selected *EasyCoder* printer added to the list of installed printers.

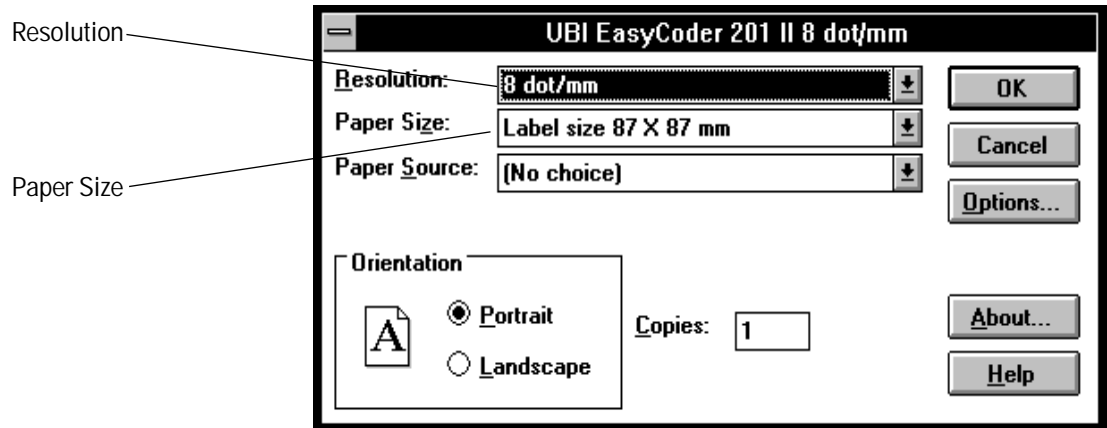
You should now set up the driver in regard of paper size, paper source, and orientation. Click the “*Setup...*” button.



Continued!

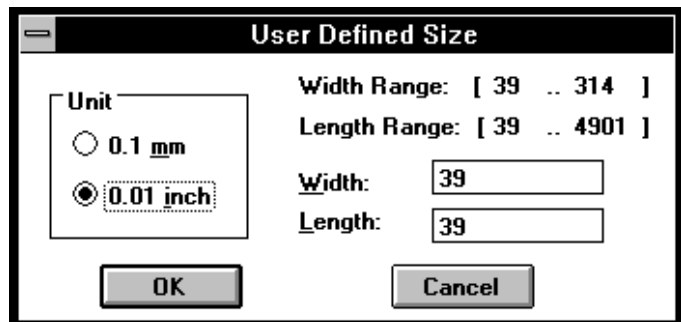
STEP-BY-STEP INSTRUCTIONS, cont'd.

- This window allows you to specify a number of parameters for the driver you have selected:



- **Resolution** is information only and shows the printhead density for the selected printer:
6 dots/mm = 153.9 dpi
8 dots/mm = 203.2 dpi
12 dots/mm (11.81 dots/mm) = 300 dpi
- **Paper Size:** The size is expressed as Width × Height in millimetres. When you click the “Paper Size” scroll box, a number of predefined label sizes suitable for the selected type of printer driver will appear.

You can also set up your own size by clicking the “User Defined Size...” option. In this case, a new window will appear:



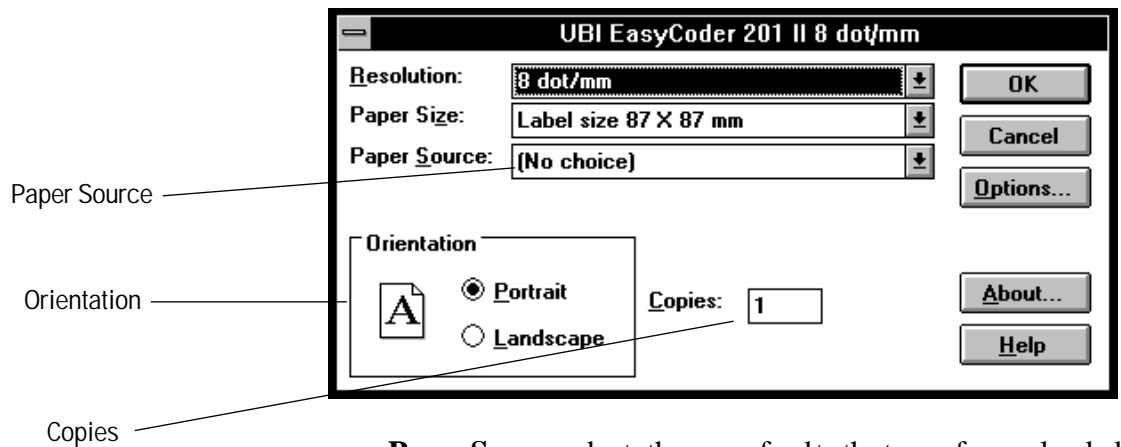
Specify unit of measure, width and length, then click the “OK” button.

Note: To change an already defined paper size, first click “User Defined Size...” in the Setup window and when the scroll box appears, click the “User Defined Size...” option in the scroll box.

Continued!

UBI Windows Driver – Installation Instructions

STEP-BY-STEP INSTRUCTIONS, cont'd.

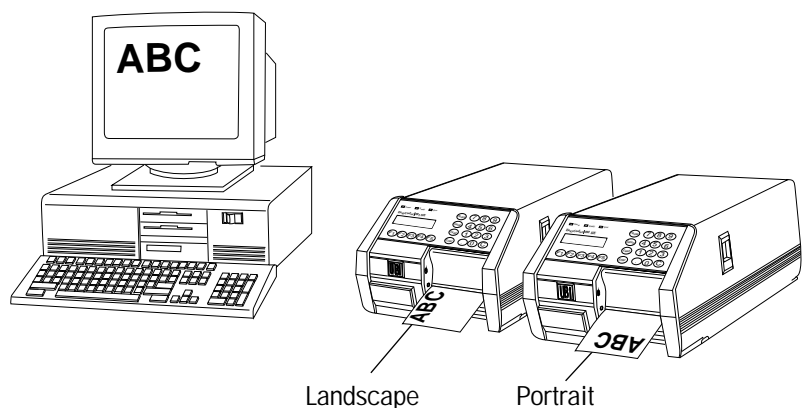


- **Paper Source** adapts the paper feed to the type of paper loaded in the printer. Select one of the following alternatives:
 - Labels (dispensing) *peel-off operation*
 - Labels (tear off)
 - Tickets with gap
 - Tickets with mark *requires black mark sensor*
 - Variable length strip

- **Orientation:** Decides the direction of the print image.

Portrait means that a line of text, that appears normally on the screen, will be printed across the label, but upside down and running from right to left.

Landscape means that a line of text, that appears normally on the screen, will be printed along the label, with the first character of the line printed first.

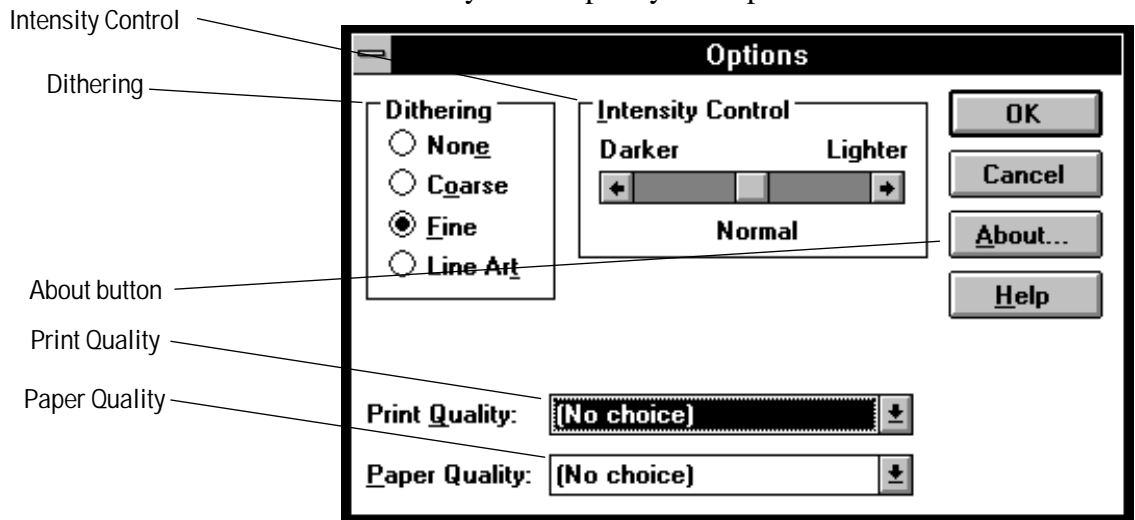


- **Copies:** Presets the number of copies to be printed. You can bypass this setup when ordering the printing in the application program.

Continued!

STEP-BY-STEP INSTRUCTIONS, cont'd.

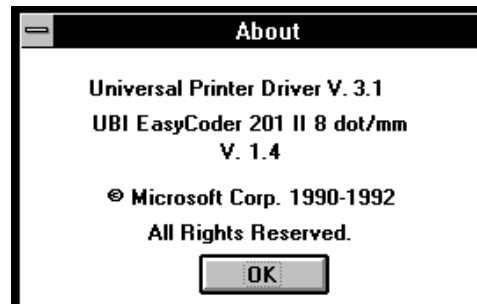
- The “Options...” button allows you to open another window, where you can specify more parameters:



- **Dithering** determines how detailed graphic images will appear in your printouts.
- **Intensity Control** allows you to controlling the darkness of printed graphics.
- **Print Quality** allows you the select print speed. There are two options: *Normal* and *High*.
- **Paper Quality** allows you to adapt the printer to the type of thermal paper or thermal transfer ribbon you intend to use, see list in Appendix 1. Which options will be listed depends on which driver you have selected.

Note: If you select direct thermal paper for a printer fitted with transfer ribbon, or vice versa, an error will occur at printing.

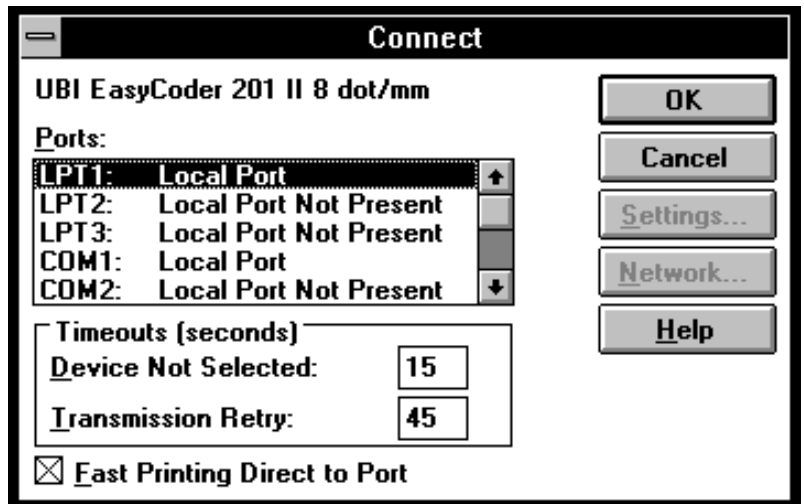
- If you want information on the software, click the “About...” button.



Continued!

STEP-BY-STEP INSTRUCTIONS, cont'd.

- ❑ Click the “OK” button to return to the “Options” window.
- ❑ Click the “OK” button again to return to the “Setup” window.
- ❑ Then click the “OK” button a third time to go back to the “Printers” window.
- ❑ In the “Printers” window, click the “Connect” button and a new window will be displayed:



- ❑ Select the **parallel** port (LPT1 or LPT2) to which you intend to connect the printer. Accept the default values for timeouts and activate the option “Fast Print Direct to Port”. Then click the “OK” button. You can now exit the *Control Panel*.
- ❑ Turn off both the printer and the computer and fit a cable between the 36-p Centronics connector on the printer and the selected parallel communication port on the computer.
- ❑ Start up the printer and select the *Windows Driver* option in the printer's start-up program (*EasyPak Start-Up* or *UBI Shell*) as described in the *User's Manual*. Check that the printer is loaded with the desired type of media.

Refer to the chapter “Using the UBI Windows Driver” on next page for instructions on how to produce labels from programs running in Windows.

USING THE UBI WINDOWS DRIVER

- ❑ Start up your computer with *MS Windows* and open the program from which you want to print your labels.
- ❑ If the program provides facilities for setting up the page size and/or margins, enter the same width and length as those selected when the printer driver was set up. Check that margins do not restrict the printable area more than intended.

If the page setup, the printer driver setup, and the actual size of the labels (or corresponding media) match, you will get the best control of the final printout, which should correspond to what you see on the computer screen.

- ❑ Print your labels according to the instructions for the program in use. There will be little or no difference between printing on an *EasyCoder* printer and on e.g. a laser printer.

If you have ordered a big batch of labels, you can temporarily hold the printing by pressing the “*Pause*” button on the printers keyboard (if any). Resume the printing by pressing “*Pause*” again.

In case of problems using the *UBI Windows Driver*, please refer to the list of possible error conditions in Appendix 2.

UBI Windows Driver – Installation Instructions

APPENDIX 1: PAPER AND RIBBON OPTIONS

The list of paper or ribbon setup options is unique for each printer model/printhead density combination and contains a selection from the options presented in the lists below. Also refer to “Paper Quality” on page 7.

DIRECT THERMAL PAPERS

Supplier	Type	Quality	Setup option	Notes
Appleton	T1062A T0972 T0972IR T0980 Polytherm	Smudge proof Smudge proof Smudge proof Smudge proof	UBI DT 110 UBI DT 120 UBI DT 120 RICOH 120 LCS	IR-readable Synthetic
Blümburg	T1968 SN	Standard	UBI DT 110	
Fasson U.S.	90HC	Smudge proof	UBI DT 110	
Jujo	AP62KM-A TP62KM-A TP62KM-A6 TP63KS	Standard Standard Standard Standard	UBI DT 110 RICOH 120LAB/LAM UBI DT 110 UBI DT 120	Semi topcoated
Kanzaki	KPT-86H KPT-86RS KPT-86S	Smudge proof Smudge proof Smudge proof	RICOH 120LAB/LAM UBI DT 120 KANZAKI 86S	IR-readable
Kanzan	KL-36B KL-46B	Smudge proof Smudge proof	RICOH 120LAB/LAM UBI DT 120	
Ricoh	120 LCS 120 LAB/LAM 130 LAB/LAM 130IAB 130NA 130LEB-E	Smudge proof Smudge proof Smudge proof Smudge proof Smudge proof Standard	RICOH 120 LCS RICOH 120LAB/LAM RICOH 130LAB/LAM UBI DT 110 UBI DT 220 UBI DT 110	IR-readable Tag 150 g/m ²
Smith & McLaurin	T903 T953	Standard Standard	RICOH 120LAB/LAM UBI DT 110	
Tomoegawa	LPB-70BT	Smudge proof	UBI DT 120	
UBI	Economy Premium Premium	Standard Standard Smudge Proof	UBI DT 110 UBI DT 120 UBI DT 110	Semi topcoated Topcoated
All Brands	Special setup for dark printout (not suited for bar code printing)		UBI DT 110+ UBI DT 110++	15% more energy to printhead 30% more energy to printhead

THERMAL TRANSFER RIBBONS (Length 450 metres ≈ 1.475 ft., Width 58, 88, or 110 mm (2.3, 3.5, or 4.3 inches))

Supplier	Type	58 mm wide	88 mm wide	110 mm wide	Receiving paper quality	Setup option
UBI	General Purpose	1-970645-20	1-970645-10	1-970645-01	Vellum Matt Coated	UBI GP 10 UBI GP 11
	High Performance	1-970646-21	1-970646-11	1-970646-02	Matt Coated Semi Gloss White	UBI HP 20 UBI HP 21



APPENDIX 2: ERROR CONDITIONS

Unexpected Printout Appearance

The printed label does not contain all of the information you expected, only part of the label is printed, or the printout is not situated where you intended.

- In “Control Panel\Printers\Setup” check that the printer driver's setup in regard of paper size corresponds with the actual size of the labels, tickets, tags, or strip. In case of “User Defined Size...”, make sure that you have entered new values, as the default values are very small (10 x 10 mm).
- In “Control Panel\Printers\Setup” also check that the printer driver's setup in regard of paper source corresponds to the type of media actually used, i.e. labels (dispensing), labels (tear off), ticket with gap, tickets with mark, or variable length strip. In case of tickets with mark, check that the printer is provided with a black mark sensor.
- If the printer is provided with a < **Feed** > key, press it a few times to check that the paper feed works properly and that a single label, ticket, or portion of strip is fed out each time the key is pressed.
- If the error still remains, check the adjustment of the label stop sensor or black mark sensor as described in the Technical Description for the printer model in question.

Error Message Appears in Printer's Display

MEMORY OVERFLOW

The RAM memory is too small to handle the information received from the computer.

- The selected Paper Size may be too large for the available memory. Select a smaller size and try again. In case of “User Defined Size...”, also check that you have entered the correct values and selected right unit of measure.
- Enter the *UBI Fingerprint's* immediate mode and check if there are any large programs or files in the RAM memory (FILES "ram:"). If necessary, make backup copies on your computer and then delete the files (KILL) from the printer's memory. See *UBI Fingerprint Programmer's Manual*.
- The same result can be achieved by using the “Clear RAM Memory” option in *UBI Shell*, see the Technical Description. After rebooting, you will have to reselect the *UBI Windows Driver* in *UBI Shell*.
- A temporary solution may be to reduce the size of the image buffer in the printer's setup mode. Refer to the Technical Description. The size of the image buffer is not critical as long as you only use the *UBI Windows Driver*.

Continued!

APPENDIX 2: ERROR CONDITIONS, cont'd.

Error Message Appears in Printer's Display, cont'd.

MEMORY OVERFLOW, cont'd.

- The number or size of the printer's RAM packages may be too small. Add another pair of RAM packages or use RAM packages with larger capacity. Refer to the Technical Description and to your local *UBI* distributor.

FIELD OUT OF LABEL

This error may occur when the printer receives a print image larger than the size of the labels. See "Unexpected Printout Appearance", paragraph 1 on previous page.

- Adjust the size of the document and print it again. It is not necessary to clear the error message.

RIBBON LOADED

This error can only occur in printers equipped for thermal transfer printing. The printer has been set up for direct thermal printing in "Control Panel\Printers\Setup\Options\Paper Quality", but is loaded with transfer ribbon.

- Remove the transfer ribbon or change the setup to a transfer ribbon (e.g. UBI GP 10/11 or UBI HP 20/21).

OUT OF PAPER OUT OF RIBBON

The printer is out of paper or transfer ribbon.

- Load a new supply of paper or transfer ribbon. If another type of paper or ribbon is used, the printer's setup must be changed in "Control Panel\Printers\Setup\Options\Paper Quality".
- In "Control Panel\Print Manager", you can see if there are any labels waiting to be printed.

ERROR IN PRINT SETUP

The UBI Windows Driver installed in your PC is a newer version than the corresponding program installed in your printer.

- Update the printer by fitting a new set of Configuration EPROMs. Consult your local *UBI* distributor.