

Information Assurance Software for Windows Mobile 6.5

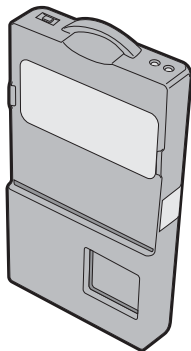
Instructions

Contents

Information Assurance Software for Windows Mobile 6.5 Instructions	3
Load the Information Assurance Software.	4
Verify If the Information Assurance Software Is Installed	4
Download the Information Assurance Software	4
Install the Information Assurance Software Onto the HHT	4
Set Up the HHT.	5
Install the BT200-T Software.	8
Install the OAC and Applications.	11
Enable the Apriva Guard Software.	11
Configure Apriva Guard.	14
Disable Wi-Fi When a CAC Is Removed	14
Leave Wi-Fi Enabled When a CAC Is Removed	14
Configure the OAC.	15

Information Assurance Software for Windows Mobile 6.5 Instructions

The Information Assurance software locks down your 70 Series Handheld Terminal (HHT) running Windows Mobile® 6.5 and allows only approved Common Access Cards (CAC) to access the HHT.



The Apriva BT200-T Smart Card Reader

Use these instructions to install and connect the Apriva BT200-T or Model AR10 Common Access Card Reader, the Odyssey Access Client™ (OAC), and the Apriva Guard™ software.

To install the Information Assurance software, you need to follow these steps:

- 1** Load the Information Assurance software.
- 2** Set up the HHT.
- 3** Install the BT200-T (unless the AR10 is being used).
- 4** Install the Odyssey Access Client™ (OAC) and applications.
- 5** Enable the Apriva Guard™ software.
- 6** Configure Apriva Guard.
- 7** Configure the OAC.

Load the Information Assurance Software

Depending on the configuration of the HHT, the Information Assurance software may already be installed. If the software is not installed, you need to download the software and install it on the HHT.

Verify If the Information Assurance Software Is Installed

Use this section to verify if you have the Information Assurance Software installed onto your HHT.

- 1 Tap the **Windows** icon > **File Explorer**, and browse to the \My Devices folder.
- 2 If you see the \DoD folder, the Information Assurance software is installed. Go to **“Set Up the HHT” on page 5**.

If you do not see the \DoD folder, download the software and load it onto the HHT. Continue with the next section, **“Download the Information Assurance Software.”**

Download the Information Assurance Software

Download the Information Assurance software from the Intermec website.

- 1 Go to www.intermec.com/AIT.
- 2 and log in using your username and password.
- 3 Select **Support** > **Downloads** and choose your HHT.
- 4 Download the Information Assurance software .cab file.

Install the Information Assurance Software Onto the HHT

Use this section to learn how to load the Information Assurance Software onto your HHT.



When you install the Information Assurance Software on your HHT, applications you installed are deleted. You can reinstall these applications when you install the Information Assurance software.

- 1 Establish an ActiveSync connection between the HHT and your desktop PC.
- 2 Browse to the \Flash File Store\CABFILES directory. If the \CABFILES folder is not there, create a new CABFILES folder.
- 3 Copy the Information Assurance software .cab file to the \CABFILES folder.
- 4 Clean boot the HHT. The HHT extracts all of the files that are required for installation and reboots several times. Wait for the HHT to stop booting before you continue with the next section.

Set Up the HHT

You need to set up the HHT so that you can install the BT200-T or AR10 common access card reader.

- 1 On the Agreement screen, tap **OK**. The Zero Hero Compliance Check screen appears and verifies whether you are Zero Hero compliant.



- 2 If you are Zero Hero verified or do not need Zero Hero verification, tap **OK** to continue to the next screen.

If you need Zero Hero verification and the radios in the computer are turned off or not powered, you need to activate the radios by tapping on the **Activate Radios** button or enabling them through Intermec Settings to run the Zero Hero Compliance Check.

- 3 At the top of the Windows Mobile Start screen, tap the **Title bar**, and then tap the **Clock** icon.
- 4 Set the time and date and tap **OK** to save your settings.
- 5 Press the yellow **Power** button to turn off the HHT and then press it again to cycle power from the HHT.



If you do not complete Steps 3 and 4 exactly as described, the date is set to 2005 at the end of the installation. You will not be able to unlock the HHT, because no CACs were issued to work with the HHT in that year.

- 6 At the top of the Windows Mobile **Start** screen, tap the Title bar, and then tap the **Green Shield** icon.



- 7 On the Wireless Center screen, tap the **Assured Radio Deactivation** button.



- 8 When the Alert message appears, tap **OK**. Your computer restarts.



- 9 When the Agreement screen appears, tap **OK**. The Assured Radio Deactivation icon is now red.
- 10 Scan this bar code to switch to the Microsoft Supplicant and enable Wi-Fi.



- 11 If you are installed the BT200-T, continue with the next section. For the AR10, go to **“Install the OAC and Applications” on page 11.**

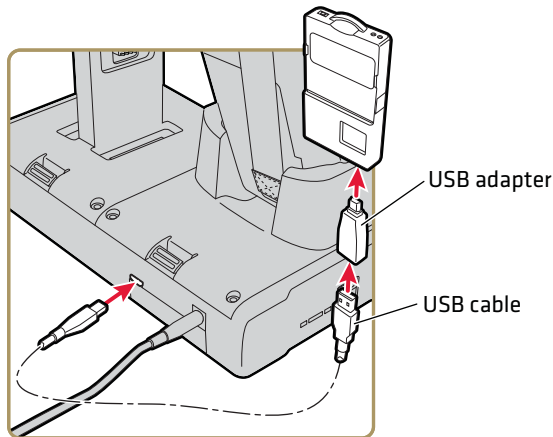
Install the BT200-T Software

If you installed the BT200-T, you need to install the BT200-T software.

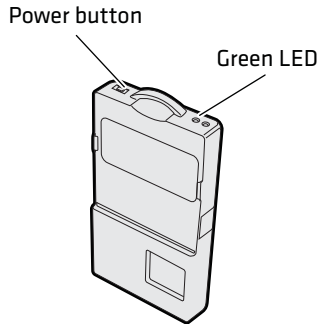
- 1 Scan this bar code to install the Apriva Smart Card driver.



- 2 Warm boot the computer. For more information, see your computer user guide.
- 3 Place your HHT in a communications dock.
- 4 Connect a USB cable to your dock and to the BT200-T using the USB adapter provided. Make sure you connect the USB adapter to the PDA port on the BT200-T.

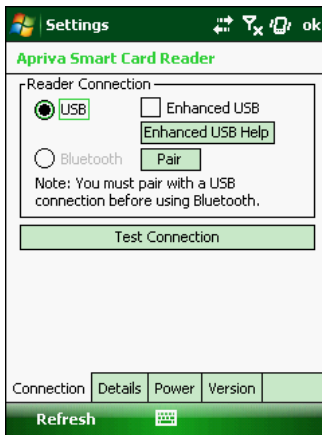


- 5 Press the **Power** button on the BT200-T. The green LED blinks to indicate that there is a USB connection.



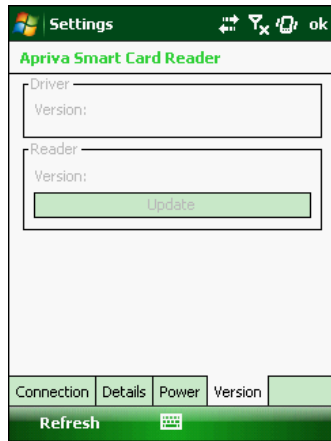
Note: If an ActiveSync message appears, click **X** to close it.

- 6 Tap **Start** > **Settings** > the **System** tab > **Apriva Reader**.



- 7 Tap **Test Connection**.
- 8 Tap **OK** when the test is complete.

- 9 Tap the **Version** tab. The version screen appears.



- 10 If the version is 03.30.30.26 12-Jul-2012 , continue with Step 14. Otherwise, tap **Update** to update your current firmware version.
- 11 Select the AprivaReaderxxxxx.bin file where xxxxx is the version number and tap **Yes**.
- 12 When the installation is complete, tap **OK**.
- 13 Tap the **Connection** tab.
- 14 Tap **Pair**.
- 15 When the Pairing Complete screen appears, tap **OK**.
- 16 Tap **Bluetooth**.
- 17 Unplug the BT200-T and tap **Test Connection**.
- 18 Verify that the BT200-T connection is active and tap **OK**. If not, go back to Step 14.
- 19 Cycle power on the BT200-T by pressing the **Power** button twice.
- 20 Tap the **ok** button to close the Apriva Reader application.

Install the OAC and Applications

Use the Odyssey Access Client (OAC) to enable security on your HHT. OAC is an enterprise-class 802.11 access client software that is FIPs 140-2 Level 1 certified and delivers comprehensive support for advanced protocols required for security network access.

After you install the OAC,, install any applications you need to use on your HHT.

- 1 Scan this bar code:



- 2 Select the **Device** radio button and click **Install**. OAC is installed on your HHT.
- 3 Install any other applications that you want on the HHT.

Enable the Apriva Guard Software

Apriva Guard enables PKI authentication and validation for HHT. Use Apriva Guard to lock down your HHT. While locked down, only authorized common access cards (CACs) are able to access information on the HHT.



Warning

Make sure you set the time, date, and cycled power to the HHT before you enable Apriva Guard. For more information, see [“Set Up the HHT” on page 5.](#)

1 Scan this bar code:

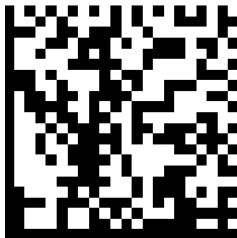


2 Select the **Device** radio button and click **Install**.

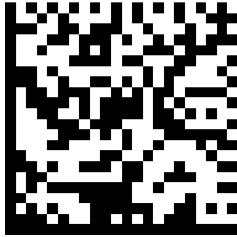
3 Scan this bar code:



4 To load the Email Signature certificate default settings, scan this bar code:



Or, to load custom certificate settings, scan this bar code, select the certificates you want to load, and tap **ok**:



- 5 Select the certificates you want to load onto the HHT and tap **Ok**.

A screenshot of a dialog box titled "Choose Apriva Certificate" with a green header. The dialog contains three checkboxes: "Email Signature" (checked), "Email Encryption" (unchecked), and "CAC Identity" (unchecked). Below the checkboxes is a green "Ok" button.

Choose Apriva Certificate

Email Signature

Email Encryption

CAC Identity

Ok

- 6 The HHT reboots and Apriva Guard is enabled. To configure the rest of the settings, you need an authorized CAC.

- 7 When the lock screen appears, insert your CAC and tap **Login**.

- 8 Enter your **Pin** and tap **Ok**. You now have access to your HHT.

If you did not install OAC, your setup is complete. Continue to the next section to configure OAC on your HHT.

Configure Apriva Guard

You can configure the way Apriva Guard interacts with the OAC.

- Disable Wi-Fi when you remove the CAC. Wi-Fi is re-enabled when a CAC is inserted, and the PIN you entered is validated.
- Wi-Fi always enabled, but Apriva Guard locks down your HHT when a CAC is removed.

Disable Wi-Fi When a CAC Is Removed

By default, Apriva Guard disables Wi-Fi when you remove the CAC. It is re-enabled when a CAC is inserted, and the PIN you entered is validated.

- Scan this bar code to disable the Wi-Fi connection when a CAC is removed:



Leave Wi-Fi Enabled When a CAC Is Removed

You can leave your Wi-Fi connection enabled when you remove the CAC if your security requirements allow it. Leaving Wi-Fi enabled speeds up the authentication process on the HHT since it does not have to reauthenticate.

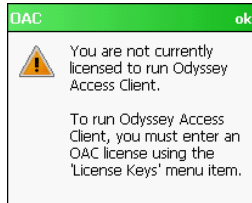
- Scan this bar code to leave Wi-Fi enabled when a CAC is removed:



Configure the OAC

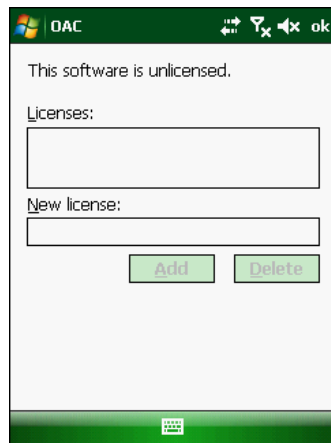
To run the OAC, you need to configure it on your HHT.

- 1 Log in to the HHT.
- 2 Tap **ok** when the prompt appears to open the OAC application.



If the prompt does not appear, tap **Start > Programs > OAC**.

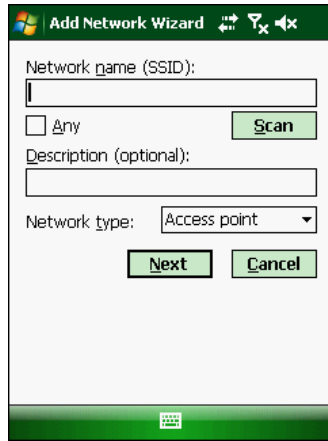
- 3 Tap **Help > License Keys**.



Note: If you do not own a license key, purchase the OAC FIPS Edition license key from CLIN 0031 GA. For more information, contact your local Intermec sales representative.

- 4 Tap **ok** to close the License Key screen.

5 Tap **Settings** > **Networks** > the **Add** button.



The screenshot shows the 'Add Network Wizard' dialog box. It features a title bar with the Windows logo and the text 'Add Network Wizard'. The main area contains a text input field for 'Network name (SSID)', a checkbox labeled 'Any', a 'Scan' button, a text input field for 'Description (optional)', a dropdown menu for 'Network type' currently showing 'Access point', and 'Next' and 'Cancel' buttons at the bottom.

6 In **Network Name (SSID)**, type in the **SSID** and tap next.

7 In **Association mode**, select **xSec** or **WPA2**.

8 Select **FIPS mode required**.

9 Tap **Next**.

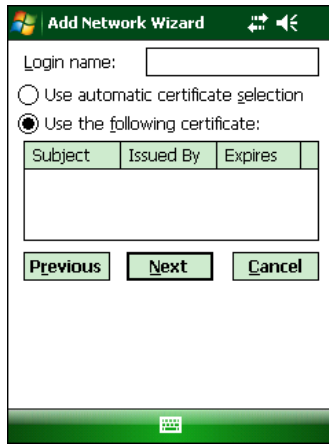
10 Tap **Remove** to remove EAP-TTLS from the EAP methods to use.

11 Tap **Add**.

12 Select **EAP-TLS** and tap **OK**.

13 Tap the **Validate server selections** check box to remove it from the list.

14 Tap **Next**.



15 In the **Login name** text box, type **Test**.

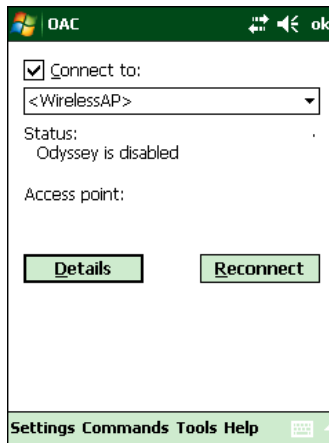
16 Select **Use the following certificate**.

17 Select the certificate you want to use.

18 Tap **Next**.

19 Tap **Finish**.

20 Tap **ok**.



21 Select the **Connect to:** check box.

22 In the drop-down menu, select the **SSID**.

23 Tap **Settings** > **Enable FIPS**.

24 Warm boot the HHT by holding down the **Power** button until the blue scan light turns on.

25 When the lock screen appears, insert your CAC and tap **Login**.

26 Enter your **Pin** and tap **ok**. You now have access to your HHT.


27 Verify the status of your network by making sure that it says Open and Authenticated, and tap **ok**.


If the OAC network status does not appear, tap **Start** > **Programs** > **OAC**.

28 If the Establish Connection dialog box appears:

a Tap **Work**.

b Tap **Connect**.

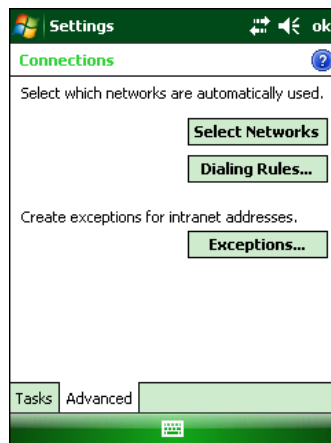
If the Wi-Fi () icon appears at the top of the screen:

a Tap Wi-Fi () icon.

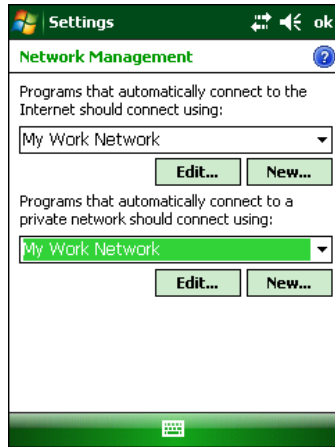
b Tap **Work**.

c Tap **Connect**.

29 Tap **Start** > **Settings** > the **Connection** tab > the **Connections** icon.



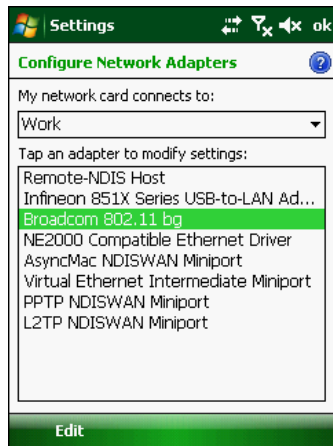
30 Select the **Advanced** tab > **Select Networks**.



31 Change both networks to **My Work Network** and tap **ok**.

32 Tap **ok** again to exit the Communications screen.

33 Tap the **Network Cards** icon.



34 In the **My Network card connection connects to:** drop-down menu, select **Work**.

35 Select **Broadcom 802.11** as your network card, and tap **ok**. You are finished configuring the OAC.



Worldwide Headquarters
6001 36th Avenue West
Everett, Washington 98203
U.S.A.

tel 425.348.2600

fax 425.355.9551

www.intermec.com

© 2013 Intermec Technologies
Corporation. All rights reserved.

Information Assurance Software for Windows Mobile 6.5 Instructions



P/N 943-417-001