

Scan Handle Instructions

扫描手柄说明

Poignée de lecture - Instructions

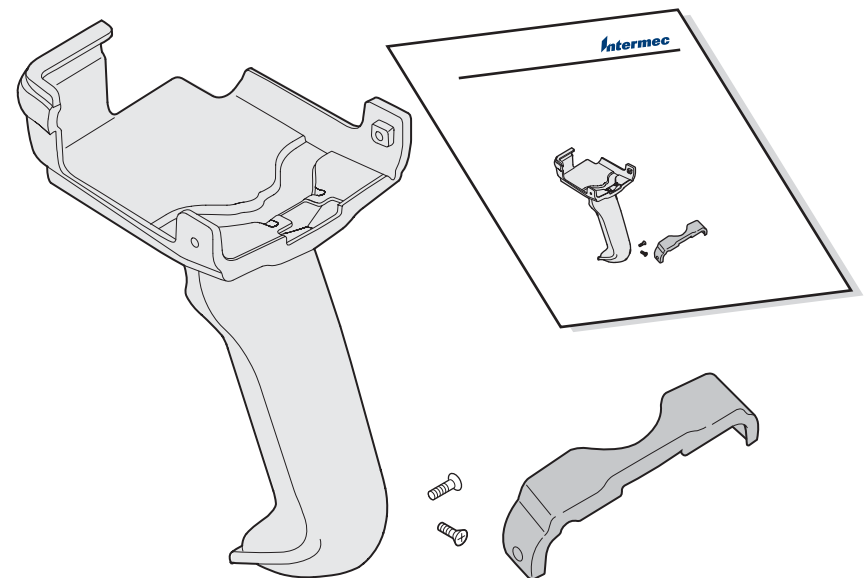
Anleitung für Scan-Griff

핸들 스캔 지침

Instruções do punho do digitalizador

Инструкции по обращению с ручкой сканера

Instrucciones para el mango del escáner

**Intermec****Worldwide Headquarters**  
6001 36th Avenue West  
Everett, Washington 98203  
U.S.A.**tel** 425.348.2600**fax** 425.355.9551

www.intermec.com

© 2007 Intermec Technologies  
Corporation. All rights reserved.

CN3 Scan Handle Instructions



P/N 943-114-003

### To attach the handle

连接手柄

Pour attacher la poignée

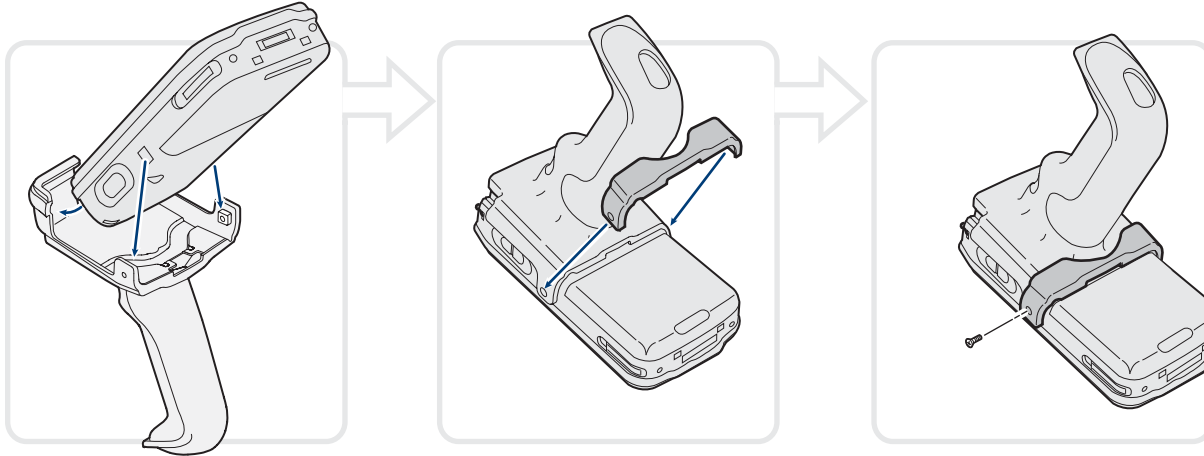
Anbringen des Griffs

핸들을 연결하려면

Acoplar o punho

Чтобы прикрепить ручку

Para instalar el mango



### To attach the handle with the handstrap

连接有手腕带的手柄

Pour attacher la poignée avec la sangle

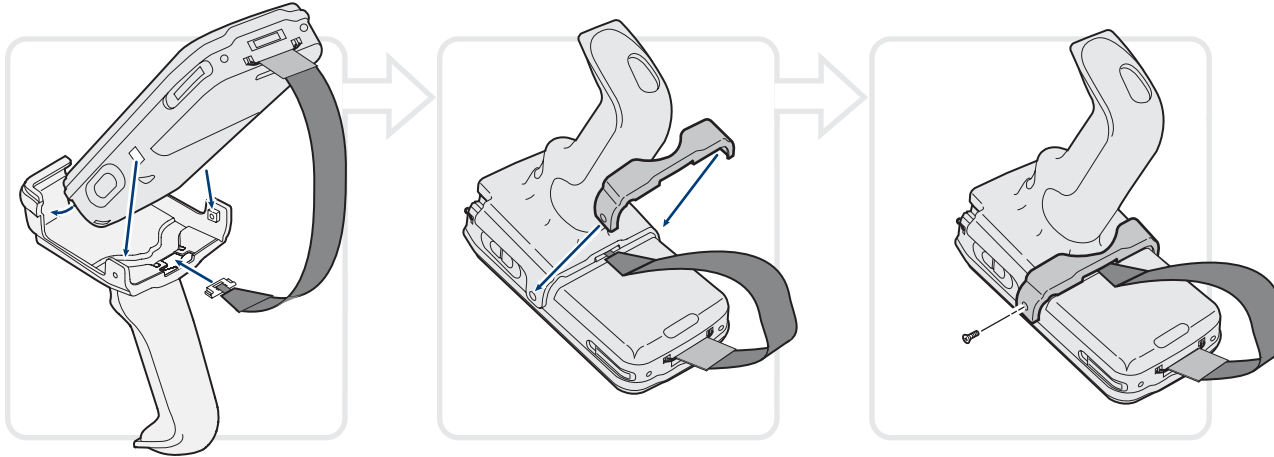
Anbringen des Griffs mit Handschlaufe

핸드스트랩으로 핸들을 연결하려면

Acoplar o punho com a correia de mão

Чтобы прикрепить к ручке ремешок

Para instalar el mango con la correa para la mano



### To remove the handle

取下手柄

Pour retirer la poignée

Entfernen des Griffs

핸들을 제거하려면

Retirar o punho

Чтобы снять ручку

Para retirar el mango

