

CK3G

Handheld Terminal Addendum



Caution

You should read all included documentation before use.

The users of this product are cautioned to use accessories and peripherals approved by Intermec Technologies Corporation. The use of accessories other than those recommended, or changes to this product that are not approved by Intermec Technologies Corporation, may void the compliance of this product and may result in the loss of the user's authority to operate the equipment.

The Non-incendive (NI) rating is a rating classification of equipment specifically defined in the National Electrical Code (NEC). To be given an NI rating, the equipment cannot, under normal operation, produce a spark or other undesirable effect that might cause combustion in any potentiality hazardous environment. The presence of gases, vapors, flammable liquids, combustible dusts, fibers, or flyings are examples of potentially hazardous environments.

NI devices must be certified by an approved testing laboratory meeting Occupation Safety Hazards Act (OSHA) standards. Circuits must not be capable of producing a spark under normal operation.



Warning

The tethered I/O cover must be attached when using the CK3G in a hazardous environment.

Shipping Information

Your CK3G comes with the following items:

- microSD card (2 GB - installed)
- Extended duty battery
- Spare extended duty battery
- Spare stylus
- CK3 charging dock
- Power supply and cord
- One of the following smart card readers:
 - Apriva BT200-T Smart Card Reader
 - Model AR7 Smart Card Reader (not NI when attached to CK3G)
- USB interface cable
- AIT-IV Documentation CD (contains the *CK3 Mobile Computer User's Manual*)

Key Features

This addendum covers some of the key features of the CK3G version of the CK3NI. For information on using your CK3NI, see the *CK3 Mobile Computer User's Manual* (P/N 935-016-xxx) on the AIT-IV Documentation CD. You can also find more information by going to the Intermec AIT-IV web site at www.intermec.com/ait.

The CK3G provides these additional key features:

- Security features:
 - EX25/EA11HD (imager) image capture disabled
 - EX25/EA11HD (imager) signature capture disabled
 - Support for the Odyssey Access Client (OAC) FIPS edition
 - DOD security banner on startup
 - Assured radio deactivation feature
 - ActiveSync RF network disabled (in-dock communication)
- AIT-IV demo application installed for scanning bar codes
- Contact Memory Device (CMD) drivers installed
- Ability to manually change radio country codes
- Smart card reader drivers installed
- Ability to scan Direct Part Marking (DPM) codes

Security Features

The CK3G has an area imager for reading 1D and 2D bar codes. The image capture and signature capture features are disabled so that you cannot use the area imager as a camera.

The CK3G uses the standard 802.11 wireless security features, which can be configured using Intermec Settings (applies only to configurations with 802.11 radio enabled).

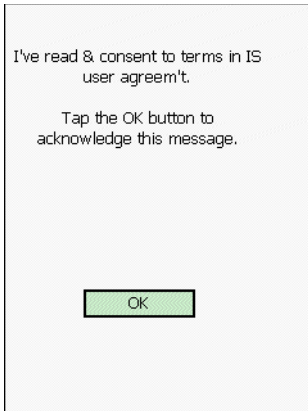
Available under AIT-IV, Federal Information Processing Standard (FIPS) wireless security can be ordered separately.

In the next sections, these other security features are described:

- DOD security banner on startup
- Assured radio deactivation
- ActiveSync RF network disabled

About the Department of Defense (DOD) Banner Requirement

The DOD Information Systems Standard Consent Banner and User Agreement appears on every boot sequence, when the CK3G is powered up from a suspend or resume state, and when a smart card is inserted. Applications will still be launched by the various operating system mechanisms, (for example, the Windows\Startup folder), but you will not have access to any applications until you acknowledge the banner message.



DOD Information Systems Standard Consent Banner and User Agreement

To acknowledge the banner and user agreement

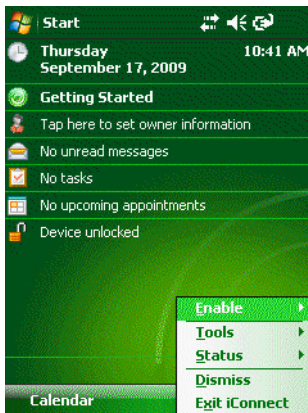
- Tap the **OK** button.

Using the Assured Radio Deactivation Feature

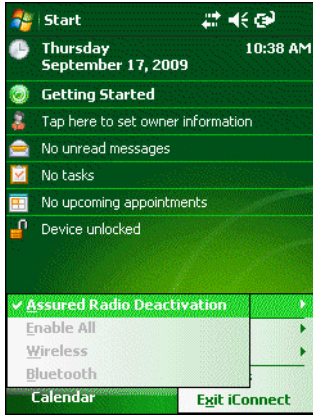
The Assured Radio Deactivation feature lets you deactivate all radio transmitters. Once deactivated, all radios (802.11 and Bluetooth) remain off until you reactivate using the Assured Radio Deactivation feature.

To access Assured Radio Deactivation

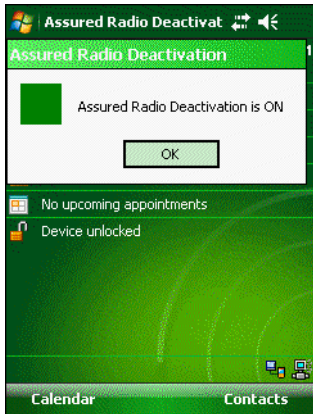
- 1 Tap the **iConnect** icon in the lower right corner of the Windows Mobile Start Screen.



2 Tap Enable.



3 To turn assured radio deactivation on, tap **Assured Radio Deactivation**. The CK3G immediately cold boots and, when restarting, displays this message:



Assured Radio Deactivation Indicators

Indicator	Assured Radio Deactivation	Radio State	iConnect Indicator Color	Transmit State
✓	On	Deactivated	Green	No radio transmission. Safety on: <ul style="list-style-type: none"> No RF energy transmitted.
X	Off	Active	Red	Radio can transmit. Safety off: <ul style="list-style-type: none"> RF energy transmitted.

4 Tap **OK** and a green square (safe) status indicator appears next to the iConnect icon in the bottom right corner of the display. The radio is deactivated and the CK3G is transmitting no RF energy.



Note: To reactivate the radios, repeat this procedure. The red square indicator appears next to the iConnect icon saying that radio is active.

In-Dock Communication Information

When you place the CK3G in its charging dock and establish an ActiveSync session to the host PC via Ethernet or USB, the 802.11 radio is deactivated. When the ActiveSync session is dropped, the 802.11 radio returns to its previous state. Bluetooth communications, if activated, are not affected.



Note: Only the USB interface is provided in the dock. You must attach an Ethernet adapter to the dock to get an Ethernet interface. For more information on ordering an Ethernet adapter for your CK3G, contact your local Intermec representative.

To confirm radio status in-dock

- 1 Tap **iConnect > Status > Wireless**. The Wireless Status dialog box appears, and the X's indicate that the radio is not communicating with the network.



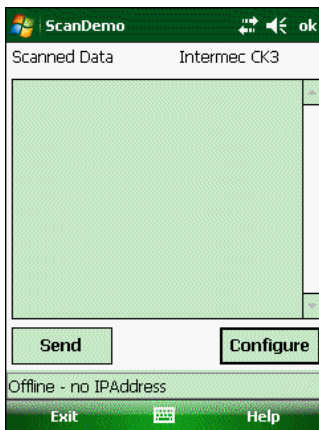
- 2 Tap **X** to close the window.

Using the ScanDemo Application to Scan Bar Codes

You can use the ScanDemo application to verify that your area imager is working and to test bar code labels. When you scan a bar code label, this application displays the information that is encoded in the label along with the symbology that is used to encode it.

To use ScanDemo

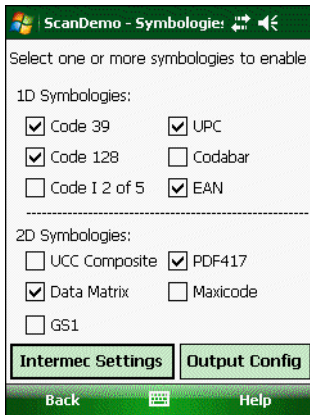
- 1 Choose **Start > Programs > ScanDemo**. The ScanDemo application opens.



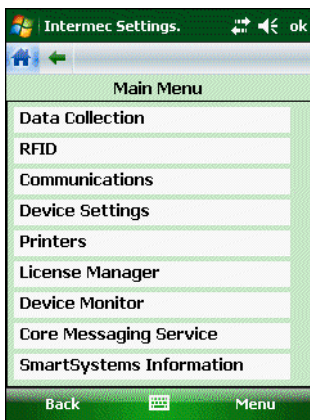
- 2 Scan a bar code label. The information you scanned along with the symbology used to encode it appears in the **Scanned Data** box.

To enable or disable symbologies

- 1 Start ScanDemo.
- 2 From the ScanDemo home page, tap the **Configure** button to see the symbologies that are enabled.



- 3 Check or clear the check boxes for the symbologies that you want to use, and then tap **Back**.
- 4 If you want to enable symbologies that do not appear in the AIT-IV ScanDemo Symbologies window, tap **Intermec Settings**. The Intermec Settings application opens.



- 5 From the Intermec Settings application, got to **Data Collection** > **Internal Scanner** > **Symbologies**.
- 6 Check or clear the check boxes for the symbologies that you want to use and then tap **ok**.
- 7 Save your settings and close Intermec Settings. The Scanner Symbologies window reappears.
- 8 Tap **Back**.

Contact Memory Device Capability

The CK3G software includes drivers that enable communications with MacSema Contact Memory Devices (CMDs) or “touch buttons.” The CK3G can read from and write to the buttons through a CMD probe. The probe attaches to the CK3G using a USB connector on the back of the Model AR7 Smart Card Reader.

The buttons and probes are available as separately orderable CLINs.

Using Setup Assistant to Change the Radio Country Code



Note: Most newer access points support the 802.11d specification, which means that you should not need to manually change the radio country code on your CK3G. However, the CK3G contains software (Setup Assistant) that allows you to change the radio country code, if necessary. Setup Assistant is installed on the CK3G to support this functionality specifically for older access point infrastructure networks.

Changing the country code applies only to the 802.11 radio. Changing the country code requires a password and can only be done by the network administrator.

You can use the Setup Assistant to change the radio country code. You can also use it to set or enable basic network parameters and to connect your CK3G to the network. The Setup Assistant guides you through setting the following basic network parameters:

- Date and time (including time zone)
- SSID (Network name)
- 802.1x security
- DHCP server or IP address, subnet mask, and default router
- Primary and secondary DNS and WINS addresses
- Device name
- Radio country code

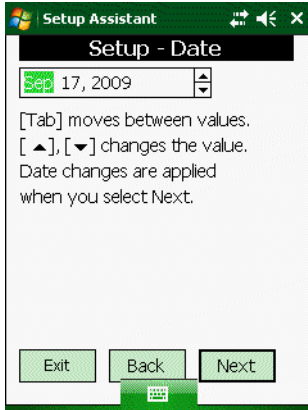
To set other parameters, use Intermec Settings or another configuration method.

To use Setup Assistant

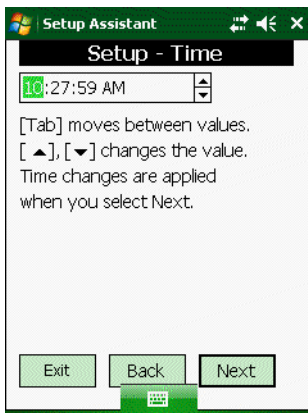
- 1 Tap **Start** > **Programs** > **File Explorer** > **Windows**, and then double-tap **Setup Assistant**.



2 Tap **Next**. The Setup - Date screen appears.



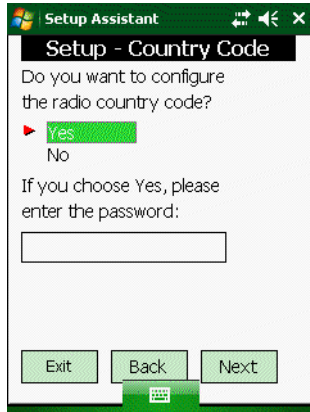
3 Set the date and tap **Next**. The Setup - Time screen appears.



4 Set the time. Tap **Next** and the Setup - Daylight Time screen appears.



- 5 Tap **Yes** or **No** depending on whether or not you want to automatically adjust the clock for daylight savings time changes and tap **Next**. The Setup - Country Code screen appears.

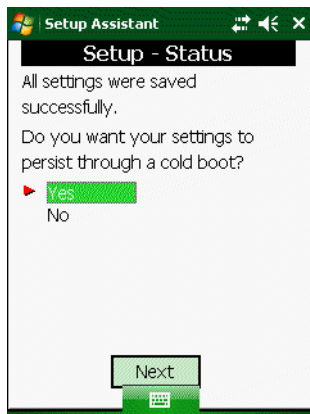


- 6 Tap **Yes** if you want to configure the radio country code. If you choose Yes, you will also need to tap the keyboard icon to display the keyboard so you can enter the password.



Note: The network administrator must change the country code if it needs to be changed.

- 7 Scroll through the list, choose the radio country code, and tap **Next**.
- 8 Tap **Yes** or **No** and then tap **Next** through the rest of the Setup Assistant screens until you reach the Setup - Status screen. Enter the information that you want to configure.



- 9 Tap **Yes** if you want your settings to be saved if you cold boot the CK3G or tap **No** if settings can be deleted.

Smart Card Reader Information

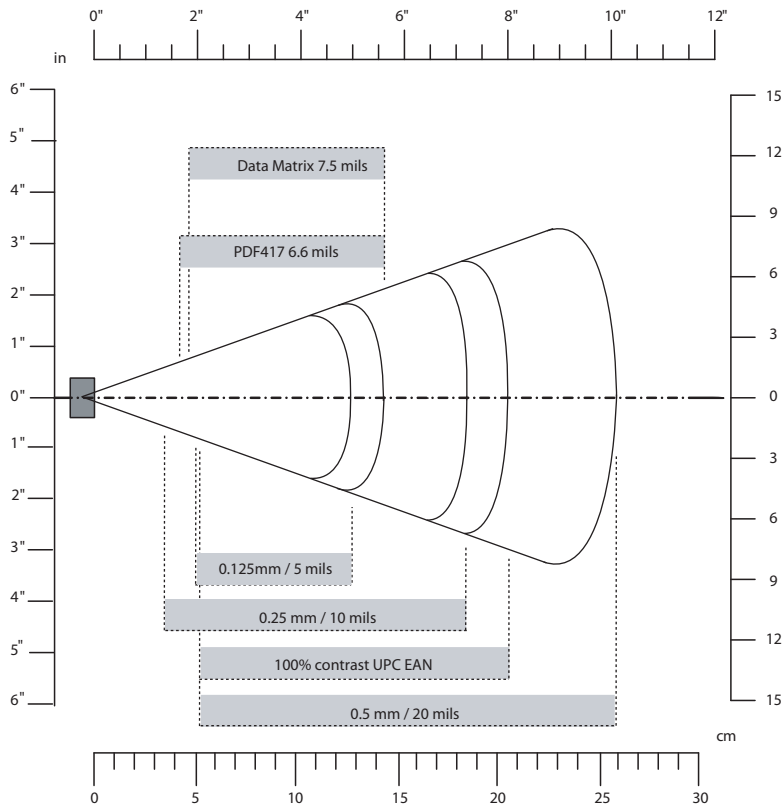
The CK3G CLIN items include the Apriva BT200-T Smart Card Reader or the Intermec AR7 Smart Card Reader. The enablement software delivered with the mobile computer will work with both the BT200-T or the AR7.



Note: In order to use the BT200-T, the Bluetooth radio on the mobile computer must be enabled and active. For more information, see [“Using the Assured Radio Deactivation Feature” on page 3](#).

EA11HD (High Density) Area Imager Minimum Reading Distances

Minimum distances are measured in the dark (0 lux).



EA11HD Minimum Reading Distances

EA11HD Typical Reading Distances

Symbology	Density	Minimum Distance	Maximum Distance
Code 39	0.1 mm (4 mils)	5.7 cm (2.2 in)	10.1 cm (3.9 in)
	0.125 mm (5 mils)	5.0 cm (2.0 in)	12.7 cm (5.0 in)
	0.15 mm (6 mils)	4.3 cm (1.7 in)	13.8 cm (5.4 in)
	0.20 mm (8 mils)	3.6 cm (1.4 in)	16.6 cm (6.5 in)
	0.25 mm (10 mils)	3.8 cm (1.5 in)	18.5 cm (7.2 in)
	0.5 mm (20 mils)	5.3 cm (2.0 in)	26.0 cm (10.1 in)
UPC/EAN 100%	0.33 mm (13 mils)	5.3 cm (2.0 in)	20.7 cm (8.1 in)
DataMatrix	0.16 mm (6.6 mils)	5.9 cm (2.3 in)	11.0 cm (4.3 in)
	0.19 mm (7.5 mils)	4.7 cm (2.0 in)	14.3 cm (5.6 in)
	0.25 mm (10 mils)	4.5 cm (1.8 in)	16.4 cm (6.4 in)
PDF417	0.12 mm (5 mils)	6.2 cm (2.4 in)	10.9 cm (4.3 in)
	0.16 mm (6.6 mils)	4.3 cm (1.7 in)	14.2 cm (5.5 in)
	0.25 mm (10 mils)	3.9 cm (1.5 in)	17.9 cm (7.0 in)



Note: Range improves as the amount of ambient light increases. Compare the improvement from the minimum reading distances to the typical reading distances.



Worldwide Headquarters
6001 36th Avenue West
Everett, Washington 98203
U.S.A.

tel 425.348.2600

fax 425.355.9551

www.intermec.com

© 2010 Intermec Technologies
Corporation. All rights reserved.



CK3G Handheld Terminal Addendum



P/N 941-010-003