

**CK61G
Handheld Computer**

Intermec Technologies Corporation

Worldwide Headquarters

6001 36th Ave.W.

Everett, WA 98203

U.S.A.

www.intermec.com

The information contained herein is provided solely for the purpose of allowing customers to operate and service Intermec-manufactured equipment and is not to be released, reproduced, or used for any other purpose without written permission of Intermec Technologies Corporation.

Information and specifications contained in this document are subject to change without prior notice and do not represent a commitment on the part of Intermec Technologies Corporation.

© 2007 by Intermec Technologies Corporation. All rights reserved.

The word Intermec, the Intermec logo, Norand, ArciTech, Beverage Routebook, CrossBar, dcBrowser, Duratherm, EasyADC, EasyCoder, EasySet, Fingerprint, INCA (under license), i-gistics, Intellitag, Intellitag Gen2, JANUS, LabelShop, MobileLAN, Picolink, Ready-to-Work, RoutePower, Sabre, ScanPlus, ShopScan, Smart Mobile Computing, SmartSystems, TE 2000, Trakker Antares, and Vista Powered are either trademarks or registered trademarks of Intermec Technologies Corporation.

There are U.S. and foreign patents as well as U.S. and foreign patents pending.

CK61G Non-Incendive (NI) Handheld Computer Addendum



Caution: This marking indicates that the user should read all included documentation before use.

The users of this product are cautioned to use accessories and peripherals approved by Intermec Technologies Corporation. The use of accessories other than those recommended, or changes to this product that are not approved by Intermec Technologies Corporation, may void the compliance of this product and may result in the loss of the user's authority to operate the equipment.

Shipping Information

Your CK61G Non-Incendive (NI) Handheld Computer ships with the following:

- Power supply and cord
- Standard battery
- Spare battery
- Tethered stylus
- Spare stylus
- Charging dock
- SD card (256 MB)
- Strap

Key Features and Connection Information

The CK61G differs from the CK61 Handheld Computer in these areas:

- Security features
- Contact Memory Device (CMD) support
- Assured radio deactivation feature
- Bluetooth not supported

Operating System

The CK61G runs Windows Mobile 5.0 only.

Security

The CK61G uses the standard 802.11 wireless security features, which can be configured using the Setup Assistant.

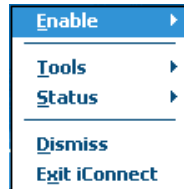
Available under AIT-III CLIN 0040, FIPS (Federal Information Processing Standard) security can be ordered separately.

Assured Radio Deactivation

The Assured Radio Deactivation feature allows you to deactivate 802.11 radio transmission. Once deactivated, the radio remains off until activated by the user.

To access Assured Radio Deactivation

- 1 Tap the **iConnect** icon in the lower right corner of the Windows Mobile Start Screen. The menu appears with these options:

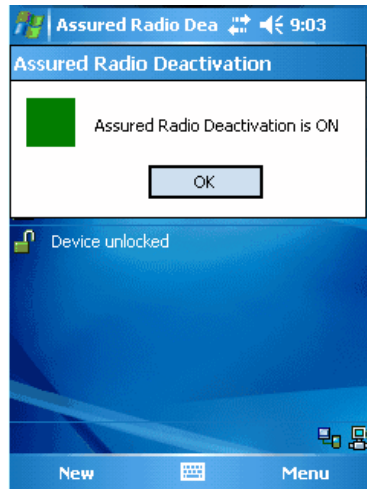


- 2 Select **Enable**. The menu that then appears allows you to choose from these options:



- 3 To toggle the radio state, tap **Assured Radio Deactivation**.

The CK61G immediately cold boots, and when restarting, your CK61G displays a dialog box with this message:



Assured Radio Deactivation Indicators

Indicator	Assured Radio Deactivation	Radio State	iConnect indicator color	Transmit State
✓	On	Deactivated	Green	No radio transmission. Safety on: <ul style="list-style-type: none"> No RF energy transmitted.
X	Off	Active	Red	Radio can transmit. Safety off: <ul style="list-style-type: none"> RF energy transmitted.

- 4 Tap **OK** and a green (safe) status indicator displays next to the iConnect icon in the bottom right corner of the display. This green symbol indicates the radio is deactivated and the CK61G radio is transmitting no RF energy.



When you tap the iConnect menu item Assured Radio Deactivation to toggle on (or off) this radio deactivation feature, the CK61G immediately cold boots and returns to operation in the selected state (either off or on). When cold booting, your CK61G displays the state of Assured Radio Deactivation, which appears in the dialog box following the restart.

Contact Memory Device

The CK61G provides an interface to Contact Memory Devices (CMD) with a CMD probe. The probe allows the CK61G to read from or write to the CMD.

The CK61G software includes MacSema drivers to enable the MacSema probes. The probes attach to your CK61G using a serial connector on an Intermec serial adapter.

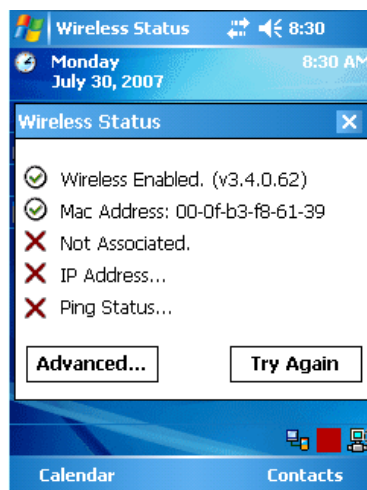
These probes can be ordered via CLIN 0020 and CLIN 0024; both include the Intermec serial adapter.

In-Dock Communication

When the CK61G is placed in its charging dock and a network connection is established via USB, Ethernet, or serial connection to the host PC, the radio is disabled. Your CK61G communicates with a host PC or other device using the interface for the docking station (USB and ActiveSync, Ethernet, or serial cable).

To confirm radio status in-dock

- 1 Tap **iConnect**.
- 2 Tap **Status**.
- 3 Tap **Wireless**. The Wireless Status dialog box appears. If radio communication is enabled and active, then the Wireless Status dialog box appears:



- 4 Tap **X** to close the window.

Bluetooth Radio

By design, the CK61G does not provide power for Bluetooth; the CK61G will not recognize Bluetooth radio devices.

Radio Country Codes

Change the country code using the CK61G Setup Assistant when the computer starts up the first time. To later change the country codes, use Intermec Settings.

Configuring the CK61G With the Setup Assistant

The Setup Assistant starts automatically the first time you turn on the CK61G. Use the Setup Assistant to set or enable basic network parameters and connect your CK61G to the network.

The Setup Assistant guides you through setting the following basic network parameters:

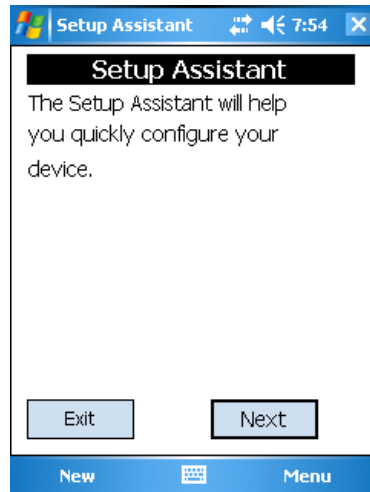
- Date and time (including time zone)
- SSID (Network name)
- 802.1x security
- DHCP server or IP address, subnet mask, and default router
- Primary and secondary DNS and WINS addresses

- Device name
- Radio country code

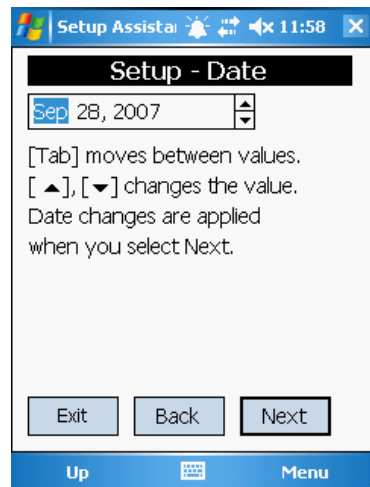
To set other parameters, use Intermec Settings or another configuration method.

To use the Setup Assistant

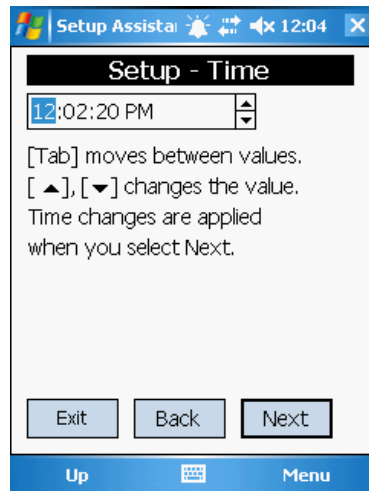
- 1 Tap **Start > Programs > File Explorer**, and then scroll to Setup Assistant.
- 2 Double-tap **Setup Assistant**.



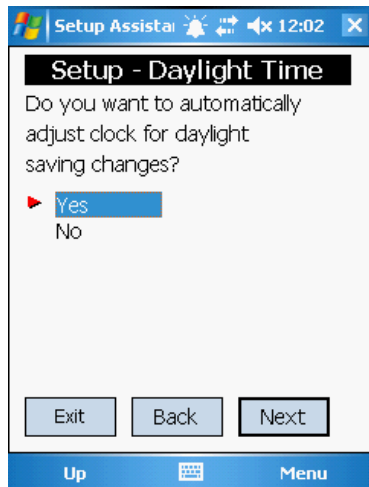
- 3 Tap **Next** to start using Setup Assistant. The Date screen appears.



- 4 Set the date and tap **Next**. The Time Setup screen appears.



- 5 Set the time. Tap **Next** and the Daylight Time Setup screen appears.



- 6 Set the daylight time if you want to automatically adjust the clock for daylight savings time changes and tap **Next**.
- 7 Tap **Yes** if you want to configure the radio country code. If you choose Yes, you will also need to tap the keyboard icon on the display and enter the password which is `cf802bg`.
- 8 Scroll through the list and select the radio country code you want to use and tap **Next**.
- 9 Tap **Yes** to set up any 802.11 security settings . Once you are finished setting up your security settings tap **Next** to continue.



Note: The CK61G uses the standard 802.11 wireless security features. Available under AIT-3 CLIN 0040, FIPS (Federal Information Processing Standard) security can be ordered separately.

- 10 Tap **Yes** if you want to obtain the IP address from a DHCP server or tap **No** if you want to specify the IP address. Tap **Next** when you are finished.
- 11 Specify a device name for the CK61G and tap **Next** to go to the next screen.



- 12 Tap **Yes** if you want your settings to be saved if you cold boot the CK61G or tap **No** if settings can be deleted.



Worldwide Headquarters
6001 36th Avenue West
Everett, Washington 98203
U.S.A.

tel 425.348.2600

fax 425.355.9551

www.intermec.com

CK61G Non-Incendive (NI) Handheld Computer Addendum



P/N 941-004-002