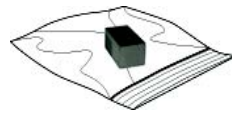


Kit Contents

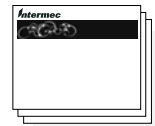
Thank you for purchasing the CV60 Vehicle Mount PC Card Foam Retainer Block. This product will help keep your CV60 PC Card securely in its slot.

This kit (PN: 203-775-001) should contain these items:

- CV60 Vehicle Mount Computer PC Card Foam Block
- CV60 Vehicle Mount Computer PC Card Foam Retainer Block Instructions



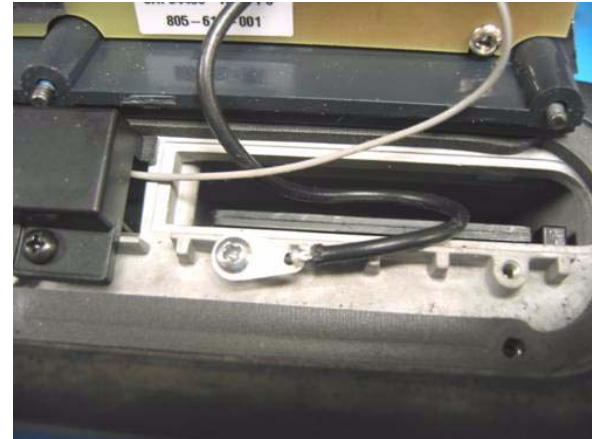
PC Card Foam Retainer Block



Documentation

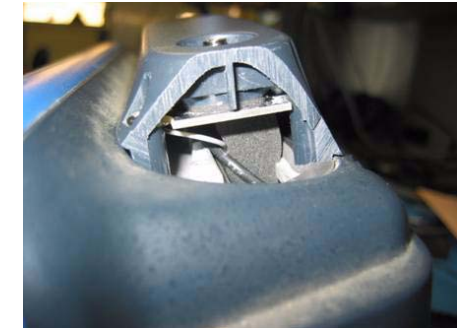
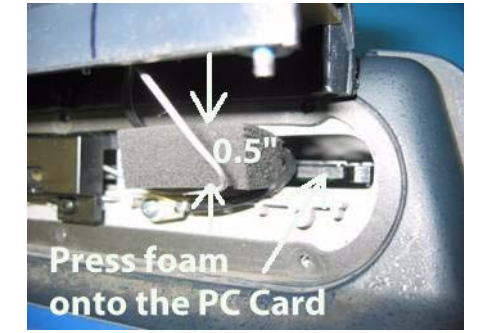
Removing the Radome Cover

- 1** Remove the radome cover from the CV60. Make sure the PC Card is pushed all the way in and latched into place.
- 2** Push the black wire down into the unit beside the PC Card as shown in the photo.



- 3** Squeeze the foam block (the 0.5" thickness) to fit and push it into the card slot. Align the foam block to the center of the card from left to right, and make sure the black and gray cables are routed as shown in the photos.

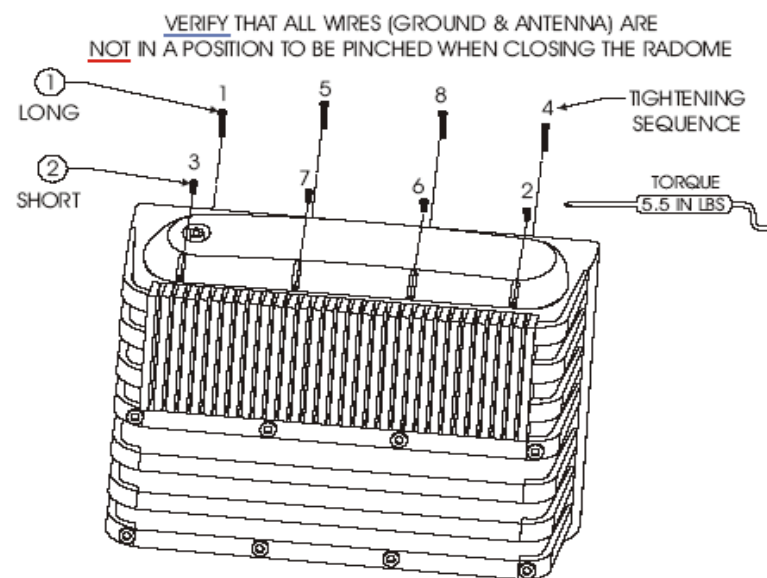
Installation



The last photo shows the foam retainer block position with the radome end removed for visual clarity.

Installation Cont'd

- 4** Reattach the radome cover, making sure the cables are not pinched by the cover during reassembly.



- 5** Torque the cover to 5.5 in-lbs using the sequence outlined above.

For More Information

Go to the Intermec web site at www.intermec.com to find the manuals in PDF format. If you experience any problems, please visit our product support web site at intermec.custhelp.com to search for product specific information.

To order accessories and printed documentation, contact your local Intermec sales representative.

Intermec

Instructions



CV60 PC Card Foam Retainer Installation Instructions



P/N 931-014-001

Intermec

Worldwide Headquarters
6001 36th Avenue West
Everett, Washington 98203 U.S.A.
tel 425.348.2600
www.intermec.com
© 2005-2006 Intermec Technologies Corporation. All rights reserved.

CV60 PC Card Foam Retainer Installation

Kit Contents

Thank you for purchasing the CV60 Vehicle Mount Computer PC Card Foam Retainer Block. This product will help keep your CV60 PC Card securely in its slot.

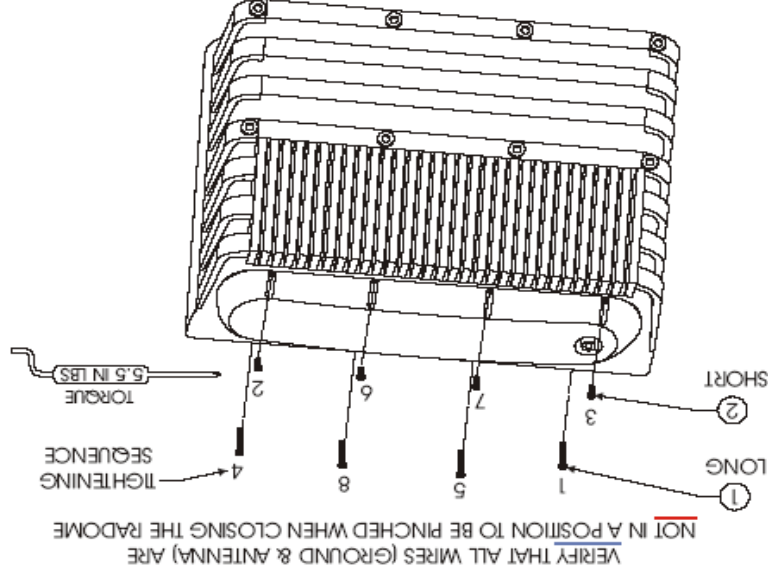
This kit (PN: 203-775-001) should contain these items:

- CV60 Vehicle Mount Computer PC Card Foam Block
- CV60 Vehicle Mount Computer PC Card Foam Retainer Block Instructions



Installation Cont'd

4 Reattach the radome cover, making sure the cables are not pinched by the cover during reassembly.

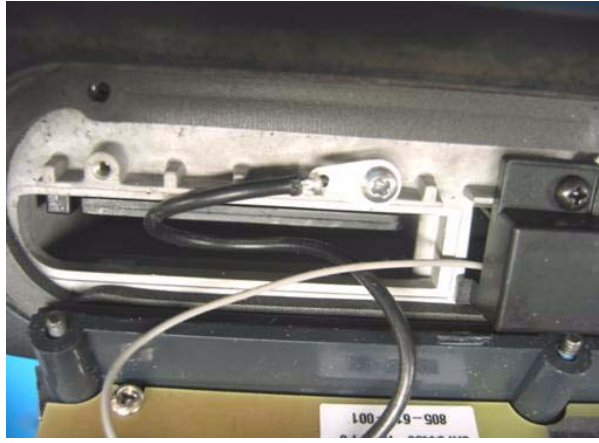


5 Torque the cover to 5.5 in-lbs using the sequence outlined above.

Removing the Radome Cover

1 Remove the radome cover from the CV60. Make sure the PC Card is pushed all the way in and latched into place.

2 Push the black wire down into the unit beside the PC Card as shown in the photo.



3 Squeeze the foam block (the 0.5" thickness) to fit and push it into the card slot. Align the foam block to the center of the card from left to right, and make sure the black and gray cables are routed as shown in the photos.

For More Information

Go to the Intermec web site at www.intermec.com to find the manuals in PDF format. If you experience any problems, please visit our product support web site at intermec.custhelp.com to search for product specific information.

To order accessories and printed documentation, contact your local Intermec sales representative.

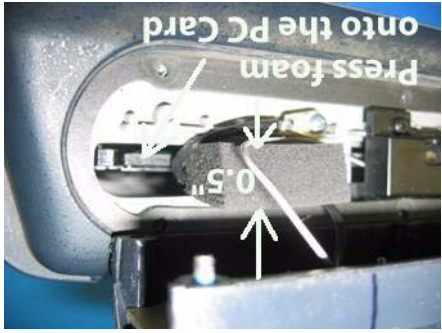


CV60 PC Card Foam Retainer Installation Instructions

P/N 931-014-001

Intermec
 Worldwide Headquarters
 6001 36th Avenue West
 Everett, Washington 98203 U.S.A.
 tel 425.348.2600
www.intermec.com
 © 2005-2006 Intermec Technologies Corporation. All rights reserved.

Installation



The last photo shows the foam retainer block position with the radome end removed for visual clarity.

Instructions



CV60 PC Card Foam Retainer Installation