



CK31 Handstrap Instructions

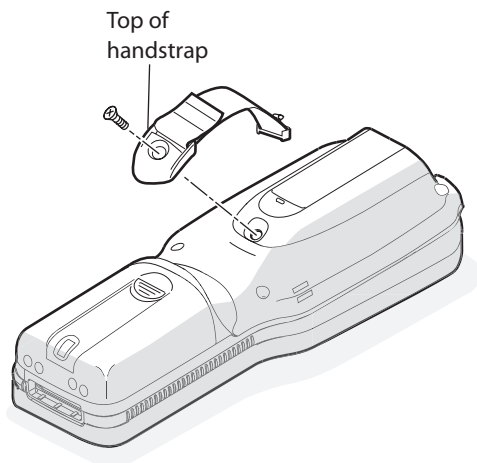
The CK31 handstrap provides you with a convenient way to help hold the CK31 Handheld Computer. To use the handstrap, simply place your hand under the elastic band and grasp the computer.

The handstrap shipping box should contain these items:

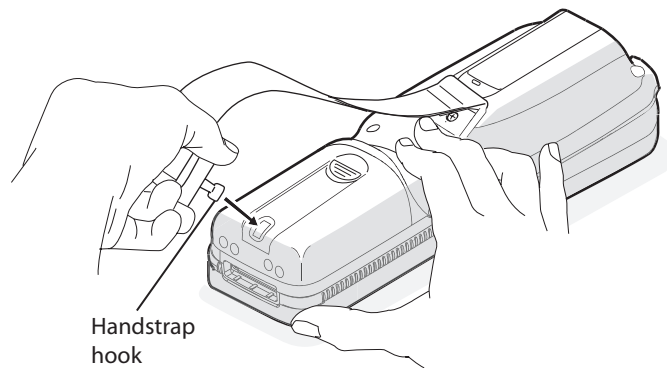
- Handstrap
- 8-32 x 5/16 flathead black screw
- This instruction sheet

To attach the handstrap

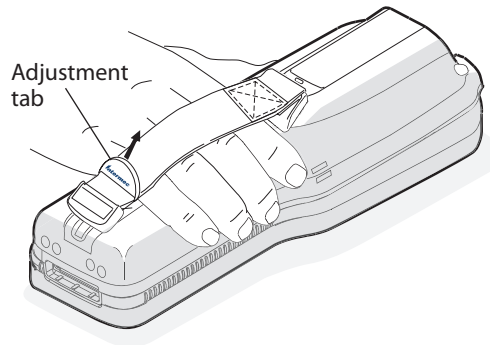
- 1 Using the screw that came with the handstrap, attach the top of the handstrap to the back of the CK31.



- 2 Insert the handstrap hook, and rotate 90°.



- 3 Pull on the adjustment tab to adjust the handstrap to fit snugly against the back of your hand.



You will need to unhook the bottom of the handstrap to remove and install the battery.

Intermec

6001 36th Avenue West
Everett, Washington 98203
U.S.A.

tel 425.348.2600

fax 425.355.9551

www.intermec.com

© 2005 Intermec Technologies
Corporation. All rights reserved.

CK31 Handstrap Instructions



P/N 075290-001