

CK31G Handheld Computer

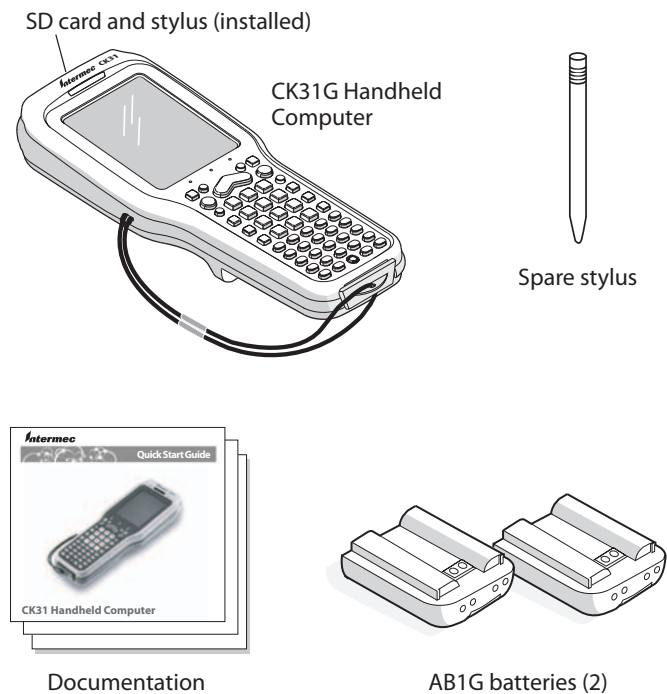


Quick Start Guide



Out of the Box

After you remove the CK31G from its shipping box, save the box and packing material in case you need to ship or store the computer. The CK31G shipping box contains these items:



Intermec
 Technologies Corporation
 6001 36th Avenue West
 Everett, WA 98203
 U.S.A.
 www.intermec.com
 © 2004 Intermec Technologies Corp.
 All Rights Reserved

P/N 074025-001

Now that the CK31G is working in your network, you may need additional information to use the computer in your data collection system. Refer to these documents for more information:

- CK31G Handheld Computer User's Manual (P/N 074023)
- Intermec Developer's Toolkits for AIT-III CD (P/N 074925)

The user's manual is available as a PDF file on the Documentation for AIT-III CD (P/N 074080). You can purchase the Intermec Developer's Toolkits for AIT-III CD from Intermec. To order accessories, printed documentation, or CDs contact your local Intermec sales representative.

Where to Go From Here

What Is the CK31G?

The Intermec CK31G Handheld Computer is an ergonomically designed handheld computer built on the Microsoft® Windows® CE.NET operating system. It is a lightweight, easy-to-use, reliable computer that runs client/server applications and web-based applications.

The CK31G makes data collection easy and includes these features:

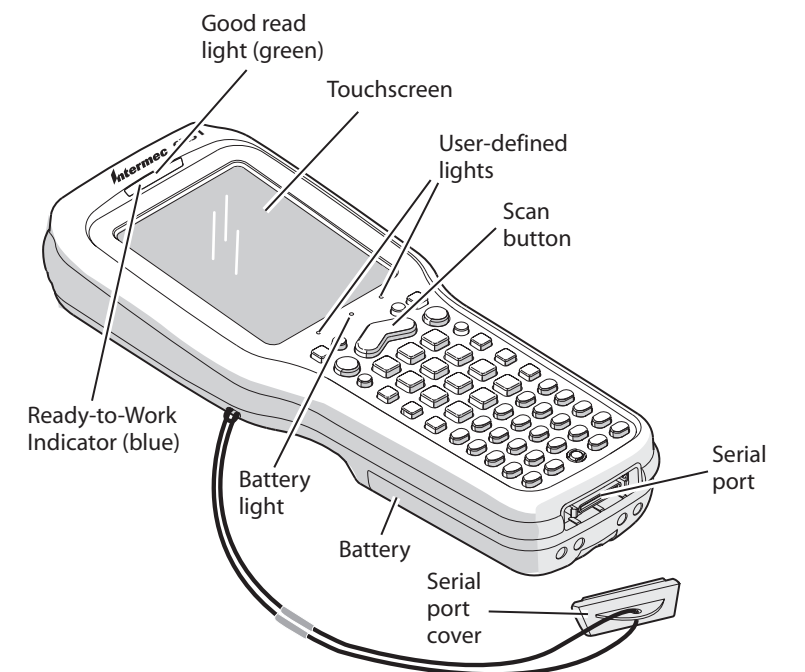
- 802.11b/g radio
- .NET Compact Framework
- Color display with touch screen
- 2D area imager
- 64MB flash/64MB RAM memory
- 400 MHz processor

You should read this quick start guide if you are a system administrator or person installing the CK31G in a network.

Specifications

Physical Dimensions	Length: 23.4 cm (9.22 in)
	Width: 9 cm (3.54 in)
	Thickness: 5.3 cm (2.07 in)
	Weight: 590 g (20.8 oz)
Power Specifications	Operating: Rechargeable 2400 mAh lithium-ion battery
	Backup: Super Cap supplies 10 minutes bridge time while replacing the main battery
Electrical Specifications	Model: CK31G
	Electrical rating: --- 7.4 to 12 VDC; 500 mA peak
Temperature and Humidity Specifications	
	Operating temperature: -20°C to 50°C (-4°F to 122°F)
	Operating humidity: 5 to 95% non-condensing
	Storage temperature: -20°C to 60°C (-4°F to 140°F)
	Storage humidity: 0 to 95% relative humidity, non-condensing

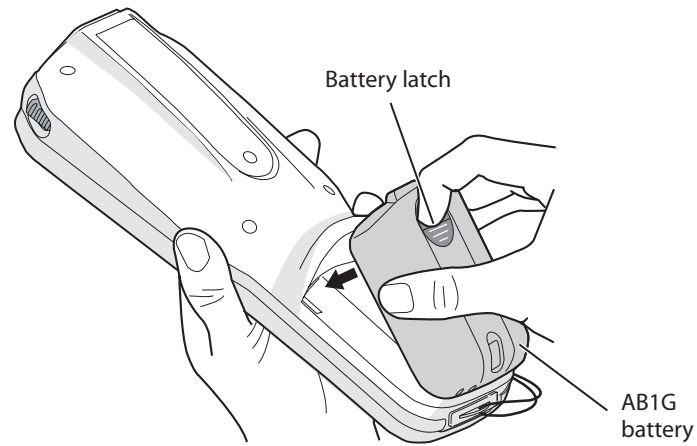
CK31G Features



CK31G computers with an IEEE 802.11b/g radio installed are Wi-Fi® certified for interoperability with other 802.11b/g wireless LAN devices.

1 Installing and Charging the Battery

- Charge the CK31G battery in one of these two ways:
 - Remove the battery and place it in the AC1 4-Slot Battery Charger.
 - Place the CK31G (with battery installed) in the AD1 1-Bay Communications Dock.



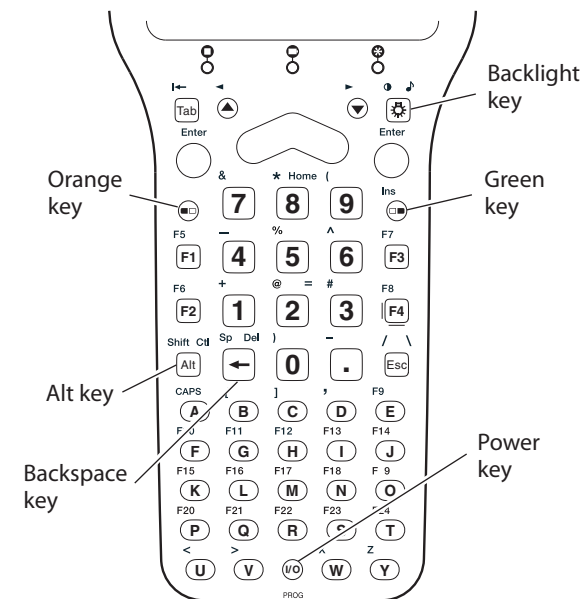
- Insert the tabs on the bottom of the charged battery into the CK31G and snap the battery into place. The battery light on the CK31G blinks three times and the CK31G turns on.

2 Turning on the CK31G and Finding Keys

The CK31G keypad is a 52-key full alphanumeric keypad. Use this illustration to locate some of the important keys on the CK31G. The Power (⏻) key is located in the middle of the bottom row of keys.

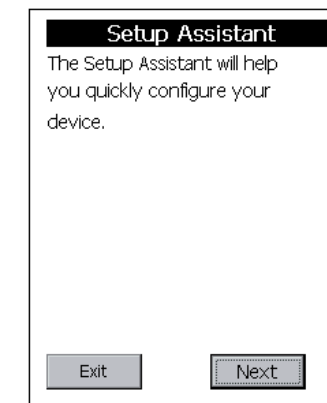
To turn on the CK31G

- Press and release the ⏻ key. The CK31G turns on.



3 Configuring the CK31G

After the CK31G finishes booting up for the first time, the Setup Assistant appears. The Setup Assistant walks you through the process of setting the time and date and the configuration parameters necessary to connect the CK31G to your network.



Setup Assistant Start Screen

Follow the directions on the Setup Assistant screen to quickly configure your CK31G. If you need to set additional parameters or change any parameters you set with the Setup Assistant, you can use the Intermec Settings application.

To open Intermec Settings

- Go to **Start > Intermec Settings**.

For help loading your applications on the CK31G, see the *CK31G Handheld Computer User's Manual* (P/N 074023).

Troubleshooting

Problem	Possible Solution
You press ⏻ to turn on the CK31G and nothing happens.	The battery may be discharged. Replace the battery with a spare charged battery or charge the battery and try again. Make sure the contrast is not set all the way to the darkest or lightest setting. Press orange and then repeatedly until you reach the desired contrast level. Make sure the backlight is turned on. Press .
You see a battery critically low icon () on the status bar.	Replace the battery immediately with a fully charged battery or place the CK31G, with the battery installed, in a communications dock.
You use your stylus to tap the screen and nothing happens.	Recalibrate your touch screen. To open the calibration application, go to Start > Touch Calibration . Follow the directions on the screen.
You are using the 802.11b/g radio and the no connection to the network icon () appears on the status bar.	The CK31G may not be communicating with your access point. Make sure the network name on the CK31G is the same as the network name (SSID) of the access point you are trying to communicate with. Make sure the CK31G is within range of an access point. Make sure the CK31G has been configured correctly for your network.

Using the Keypad

The CK31G provides color-coded keys to let you access additional characters, symbols, and functions printed on the keypad overlay. Once you understand how to use the color-coded keys and key sequences, you can access all of the additional features printed on the keypad overlay. Make sure you press and release the first key before you press the second key.

Understanding How to Use the Color-Coded Keys

You Want to:	Press:
Use an orange character or function printed above a key	Orange key and then the key with the character or function printed above it
Use a green character or function printed above a key	Green key and then the key with the character or function printed above it
Lock a green, orange, Shift , Ctl , or Alt key to stay on	, , Ctl , Alt , or Shift key twice
Unlock a green, orange, Shift , Ctl , or Alt key	, , Ctl , Alt , or Shift key once

For example, to change the contrast:

- Press Orange and then until you reach the desired contrast level.

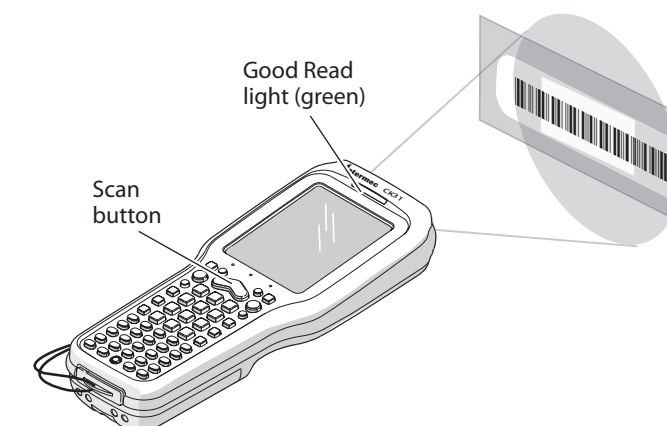
Scanning a Bar Code With ScanDemo

Use the ScanDemo application to see how the imager on your CK31G works. You can hold your CK31G in any orientation (360°) while scanning bar codes and you can read 2D bar code symbologies. Using the 2D imager is very similar to taking a picture with a digital camera.

To scan a bar code with ScanDemo

- From the CK31G desktop, double-tap the ScanDemo icon. The ScanDemo application opens on your desktop.
- Press the **Scan** button on the keypad, or pull the trigger on the handle, and center the red aiming beam over the bar code label.

The imager flashes repeatedly while it is reading a bar code.



When the CK31G successfully reads a bar code label, you hear a high beep and the green Good Read light turns on briefly.

- Release the **Scan** button.