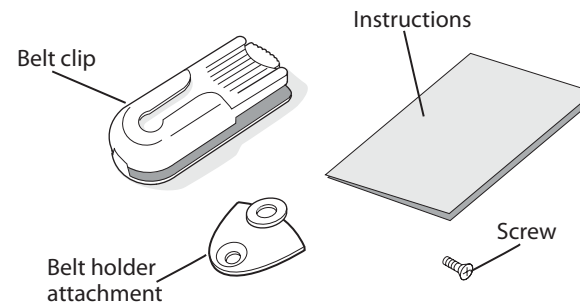




## CK1 Swiveling Belt Holder Instructions

The swiveling belt holder provides you with an easy way to secure the CK1 Handheld Computer when you are not using it.

These instructions describe how to install and use the swiveling belt holder. Before using the swiveling belt holder, please read these instructions and save them for future reference.



**Shipping package contents:** This illustration shows the contents of the swiveling belt holder kit.

If your CK1 has a handle, you need to remove it before you install the swiveling belt holder. For help, see the instructions that shipped with your handle.

To install the swiveling belt holder, you also need this tool:

- #2 Phillips screwdriver



Technologies Corporation  
6001 36th Avenue West  
Everett, WA 98203  
U.S.A.

[www.intermec.com](http://www.intermec.com)

© 2004 Intermec Technologies Corp.  
All Rights Reserved

CK1 Swiveling Belt Holder Instructions

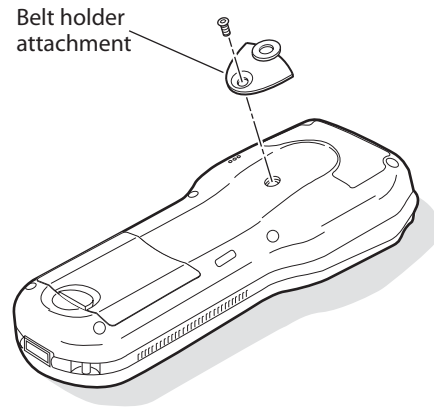


P/N 073777-001

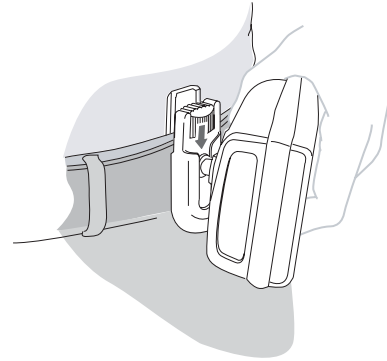
## Installing the Belt Holder Attachment

- 1 If there is a screw attached to the back case of the CK1, remove the screw.
- 2 Secure the belt holder attachment to the CK1 using the screw that shipped with the swiveling belt holder kit.

If you have a torque driver, tighten the screw to 0.9 Nm (8 in-lb).



- 2 Hold the CK1 at a 90-degree angle to the belt holder and slide the belt holder attachment into the groove until it clicks into place.



When you let go of the CK1, the weight of the computer makes it swing down so that it hangs vertically with the screen at the top.

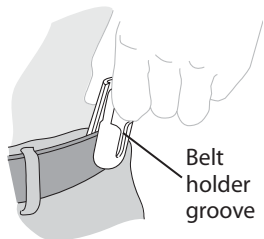
The CK1 is now securely attached to the belt holder.

## Using the Belt Holder

You can easily attach the belt holder to your belt and insert and remove the CK1.

### To use the belt holder

- 1 Pinch the top of the belt holder, slide it over your belt, and release the belt holder. Make sure that the belt holder groove is facing outward.



### To remove the CK1 from the swiveling belt holder

- 1 Turn the CK1 so that it is at a 90-degree angle to the belt holder.
- 2 While pressing down on the release button, slide the belt holder attachment up and out of the groove.

