

MobileLAN™ access WA21



Intermec
Technologies Corporation
6001 36th Avenue West
Everett, WA 98203
U.S.A.
www.intermec.com
© 2002 Intermec Technologies Corp.
All Rights Reserved



Quick Start Guide



Safety First



Caution

Government regulatory agencies require that this access point only use approved antennas. Therefore, this access point uses a custom antenna connector. Do not use antennas not approved for use with this access point.

Attention: Les organismes de réglementation gouvernementaux exigent que ce point d'accès. Par conséquent, le point d'accès est doté d'un connecteur d'antenne personnalisé. N'utilisez pas des antennes qui ne sont pas approuvées.



Caution

The WA21 without the internal power supply option is intended to be powered only from an Ethernet host that complies with the IEEE 802.3af specification for power over Ethernet (POE).

Attention: Le WA21 sans option de source d'alimentation interne est conçu pour être alimenté à partir d'un hôte Ethernet qui est conforme à la spécification IEEE 802.3af pour l'alimentation par Ethernet (POE, de l'anglais Power Over Ethernet).



Caution

The WA21 with the internal power supply option may be connected either to a standard Ethernet port or to a powered Ethernet host that complies with the IEEE 802.3af specification for power over Ethernet.

Attention: Le WA21 avec option de source d'alimentation interne peut être connecté soit à un port Ethernet standard, soit à un hôte Ethernet alimenté qui est conforme à la spécification IEEE 802.3af pour l'alimentation par Ethernet.

When the WA21 is connected to a powered Ethernet host, both the AC power cord and the Ethernet cables must be disconnected prior to servicing.

Attention: Lorsque le WA21 est connecté à un hôte Ethernet alimenté, le cordon d'alimentation CA et les câbles Ethernet doivent tous être débranchés avant tout entretien ou dépannage.



Caution

About the WA21

Intermec's MobileLAN™ access family of access points delivers reliable and seamless wireless performance to almost any operational environment. The MobileLAN access WA21 can be powered either by AC power or by power over Ethernet to make installation easier. It is designed for standards-based connectivity and it may have up to two of the following radios installed:

- IEEE 802.11b
- IEEE 802.11a



The WA21 with an IEEE 802.11b radio installed is Wi-Fi certified for interoperability with other 802.11b wireless LAN devices.

This quick start guide helps you to understand the WA21 ports and LEDs. You can also use this quick start guide to get an overview of how to install the WA21, how to connect the WA21 to power and to your network, and how to use the MobileLAN access Utility to configure its IP address. Once you assign the WA21 an IP address, you can continue configuring it using a Web browser interface or a Telnet session.

For complete instructions on how to install, operate, configure, maintain, and troubleshoot your WA21, see the *MobileLAN access System Manual* (P/N 067150). Please visit the Intermec Web site at www.intermec.com to download this manual and many other current manuals in PDF format. Or, you can order printed documentation from your local Intermec representative.

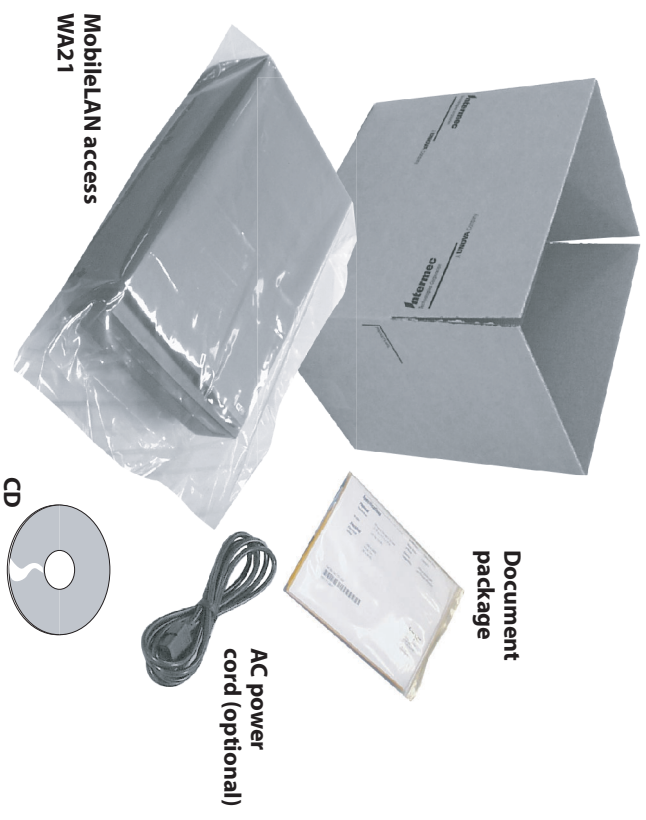
Specifications

Physical dimensions	9.5 cm x 23.6 cm x 35.5 cm (3.75 in x 9.3 in x 14.0 in)
AC electrical rating	~100 to 240 V, 1.0 to 0.5A, 50 to 60 Hz
Standard	~100 to 120 V, 1.0A, 50 to 60 Hz
Heater (optional)	or ~200 to 240 V, 0.5A, 50 to 60 Hz
Power over Ethernet electrical rating	~48V, 315 mA
Environmental rating	IP 54
Operating temperature	-25°C to 70°C (-13°F to 158°F)
Standard	-30°C to 70°C (-22°F to 158°F)
Heater (optional), AC only	
Heater (insulated bag (optional), AC only)	-30°C to 0°C (-13°F to 32°F)
Storage temperature	-40°C to 70°C (-40°F to 158°F)
Humidity	10 to 90%, non-condensing

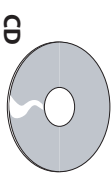
Patent information

Product is covered by one or more of the following patents: 4,910,794; 5,070,536; 5,295,154; 5,349,678; 5,394,436; 5,425,051; 5,428,636; 5,483,676; 5,504,746; 5,546,397; 5,574,979; 5,592,512; 5,680,633; 5,682,299; 5,696,903; 5,740,366; 5,790,536; 5,844,893; 5,862,171; 5,940,771; 5,960,344. There may be other U.S. and foreign patents pending.

Out of the Box



MobileLAN access
WA21



CD



AC power
cord (optional)

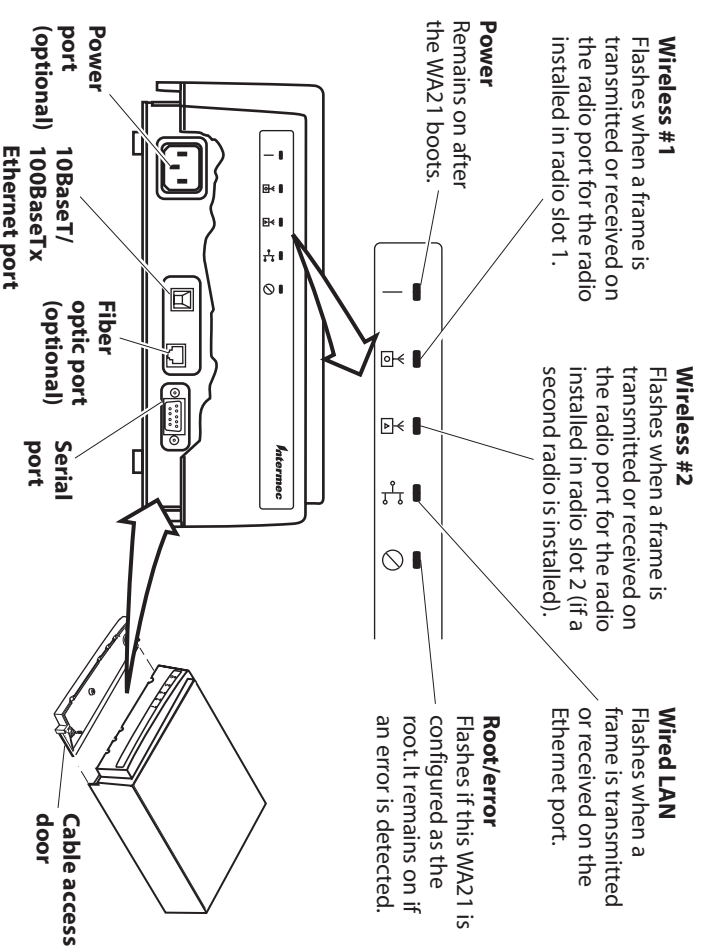
Document
package



Note: The WA21 does not ship with an antenna (except for one 802.11a configuration that ships with non-removable antennas). For a list of antennas and antenna accessories, see the *MobileLAN access System Manual* or contact your local Intermec representative.

1 Defining the LEDs and Ports

To access the WA21 ports, unscrew the two thumbscrews that are on the front of the cable access door and then remove the door.

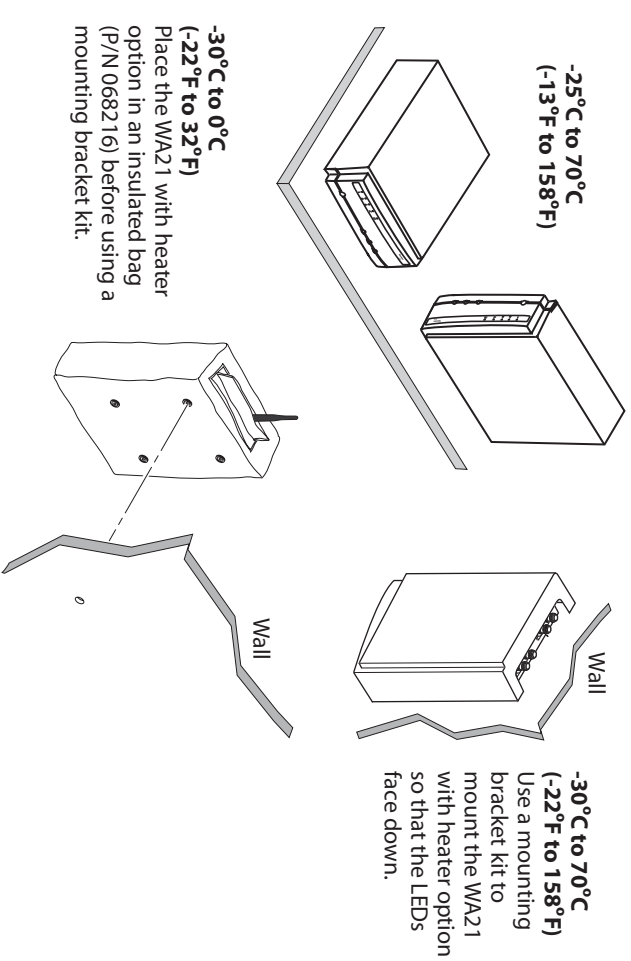


2 Mounting the WA21

You can place the WA21 either horizontally or vertically on a stable surface. You can also mount the WA21 to a wall or a beam using one of these mounting bracket kits:

- Mounting bracket kit (P/N 068918)
- Rotating mounting bracket kit (P/N 068751)

Depending on your operating temperature needs and power, you can use these options:

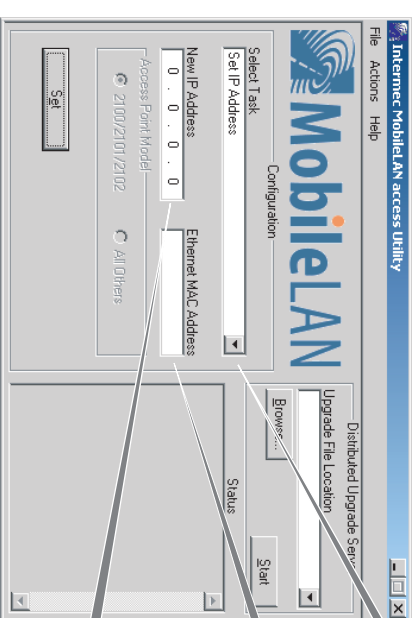


4 Setting an Initial IP Address

- 1 Install the MobileLAN access Utility on your PC by inserting the enclosed CD, clicking Install Software, and following the instructions that appear on your screen. You can also download the software from <http://mobilelan.intermec.com>.

Note: Your PC must be on the same Ethernet segment as the access point. Or, if your PC is communicating wirelessly with the access point, you must have an active radio connection.

- 2 Start the utility.
- 3 Configure parameters A through C. See the screen to the right.
- 4 Click Set.
- 5 Reboot the access point by disconnecting it from and reconnecting it to a power source. The Status box lets you know when the new IP address is successfully set.



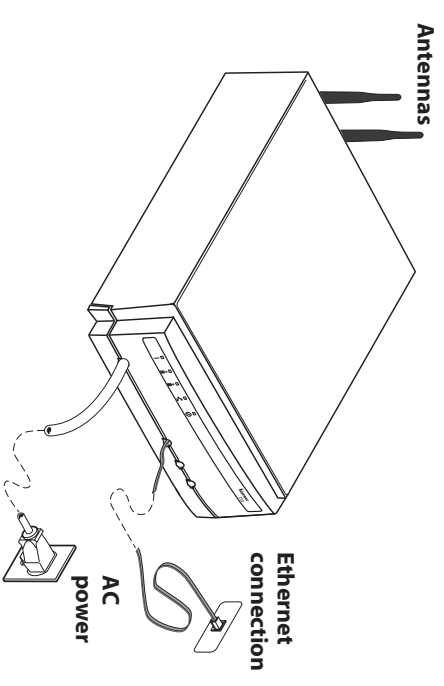
- A Click the down arrow and choose Set IP Address.
- B Enter the Ethernet MAC address of the access point (printed on a label on the access point).
- C Enter the new IP address of the access point.

Congratulations!

Your wireless end devices can now begin transmitting data packets through the WA21 to your wired network. To continue configuring the access point, from the Actions menu choose Configure Access Point. Your Web browser application (for example, Internet Explorer) starts and the Access Point Login screen appears.

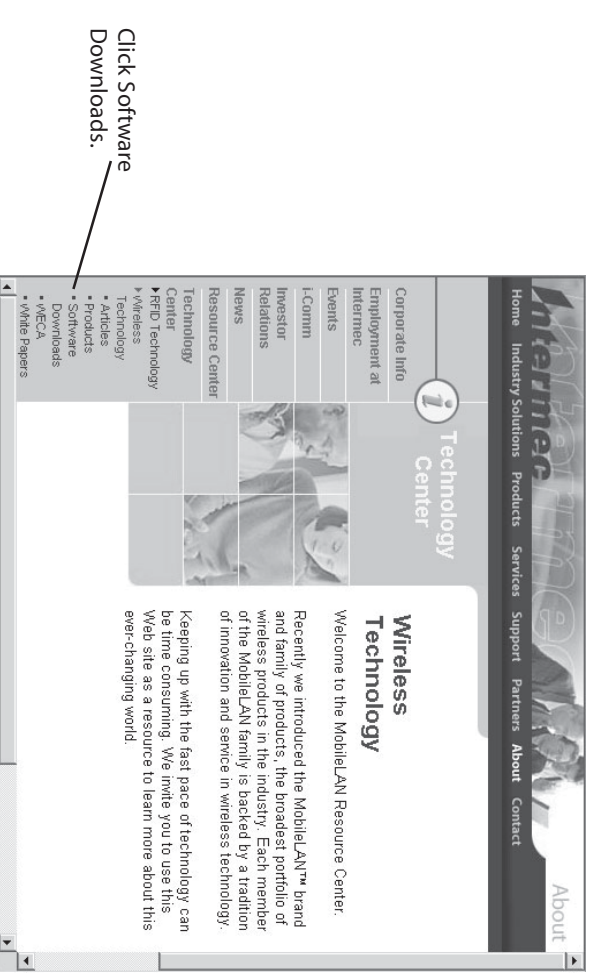
3 Connecting the WA21

- 1 Attach antennas to the WA21. Intermec offers a variety of antennas and antenna accessories. For a complete list, see the *MobileLAN access System Manual*.
- 2 Connect the WA21 to your network. You can either use an Ethernet cable to connect the Ethernet port to an Ethernet drop or you can use the fiber optic port option. For help connecting the WA21 to your fiber optic network, see "Connecting to Your Fiber Optic Network" in the *MobileLAN access System Manual*.
- 3 Connect the WA21 to power. You can either use an AC power cord or power over Ethernet. To use the power over Ethernet option, you use an Ethernet cable to connect the Ethernet port to a MobileLAN power bridge or another 802.3af-compliant power over Ethernet network. For help, see the documentation that shipped with your power bridge.



5 Checking for Software Upgrades

You should check the Intermec MobileLAN Web site at <http://mobilelan.intermec.com> for free software downloads and the latest documentation. To upgrade your access point software, follow the instructions in the *MobileLAN access System Manual*.



Click Software Downloads.