

Getting Started Guide

P/N 070505-001



5023 Data Collection PC™



A **UNOVA** Company

Intermec Technologies Corporation
6001 36th Avenue West
P.O. Box 4280
Everett, WA 98203-9280

U.S. service and technical support: 1-800-755-5505
U.S. media supplies ordering information: 1-800-227-9947

Canadian service and technical support: 1-800-688-7043
Canadian media supplies ordering information: 1-800-268-6936

Outside U.S. and Canada: Contact your local Intermec service supplier.

The information contained herein is proprietary and is provided solely for the purpose of allowing customers to operate and/or service Intermec manufactured equipment and is not to be released, reproduced, or used for any other purpose without written permission of Intermec.

Information and specifications in this manual are subject to change without notice.

© 2000 by Intermec Technologies Corporation
All Rights Reserved

The word Intermec, the Intermec logo, JANUS, IRL, Trakker, Antares, Universal Access Point, UAP, TE2000, Data Collection Browser, dcBrowser, Data Collection PC, Adara, Duratherm, EZBuilder, Precision Print, PrintSet, Virtual Wedge, and CrossBar are either trademarks or registered trademarks of Intermec Technologies Corporation.

Throughout this manual, trademarked names may be used. Rather than put a trademark (™ or ®) symbol in every occurrence of a trademarked name, we state that we are using the names only in an editorial fashion, and to the benefit of the trademark owner, with no intention of infringement.

Contents

Introducing the 5023 Data Collection PC 5

Equipment You Need to Get Started 5

Getting the 5023 Up and Running 5

Unpacking the 5023 6

Charging and Installing the Main Battery Pack 6

About the Bridge Battery 8

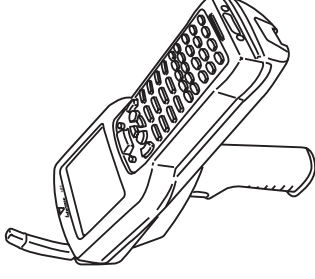
Turning On the 5023 and Verifying Operation 9

Specifications 10

Where to Find Other Information 11

Introducing the 5023 Data Collection PC

The 5023 Data Collection PC™ is a portable hand-held computer that comes ready to connect to your RF network. With an IEEE 802.11B High Rate (HR) radio, Smart Card reader, and handle with scanner trigger, the 5023 makes data collection easy and is engineered to take full advantage of its Microsoft Windows CE operating system.



Equipment You Need to Get Started

To use the 5023 Data Collection PC, you need this equipment:

- Lithium-ion main battery pack (Part No. 068537, sold separately)
- Z2400 battery charger
- (Optional) L5020 Serial Communications Adapter and power supply (Part No. 065236) or D5020 Communications Dock

Getting the 5023 Up and Running

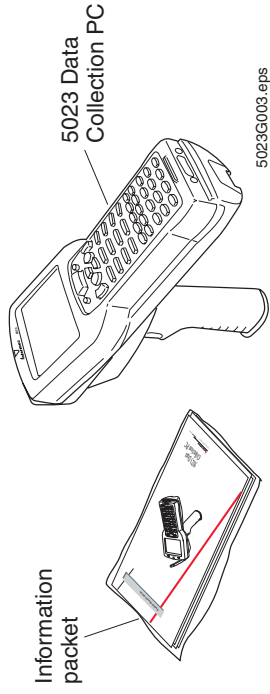
Follow these steps to start using your new 5023:

- 1 Unpack the 5023 and documentation.
- 2 Charge and install a main battery pack.
- 3 Turn on the 5023 and verify correct operation.

These steps are described in detail in the next sections.

1 Unpacking the 5023

When you remove the 5023 from its box, save the box and shipping material in case you need to ship or store the 5023. Check the contents of the box against the invoice for completeness, and contact your local Intermec service representative if there is a problem.



These items should be in the information packet:

- Getting Started Guide (this document)
- Authorized Service Location sheet
- Safety supplement
- Microsoft software agreement
- Laser warning label set

2 Charging and Installing the Main Battery Pack

The main power source for the 5023 is a 1500 mAh lithium-ion battery pack. The 5023 will not operate without a main battery pack even when it is connected to an AC power source using a D5020 or an L5020. Before you can use the 5023, you must fully charge the main battery pack.

To charge the main battery pack

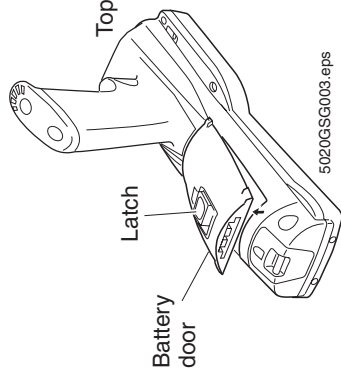
- Place the main battery pack in an empty slot in the Z2400 battery charger. The main battery pack is fully charged in about 4 hours. For help, see the documentation that came with your battery charger.

You can also use the D5020 Communications Dock or the L5020 Serial Communications Adapter with power supply to trickle-charge the main battery pack. For help, see the *D5020 Communications Dock Getting Started Guide* (Part No. 068976) or the *L5020 Serial Communications Adapter Quick Reference Guide* (Part No. 068978).

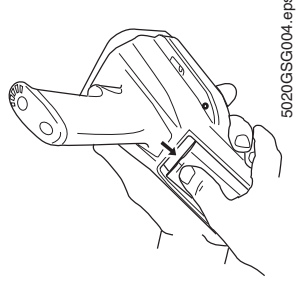
Replace the main battery pack with Part No. 068537 only. The use of any other battery pack may present a risk of fire or explosion. Contact your local Intermec sales representative for replacement main battery packs. **DISPOSE OF USED MAIN BATTERY PACKS PROMPTLY. KEEP AWAY FROM CHILDREN.**

To install the main battery pack

1. Open the battery door by pushing down on the latch and sliding it toward the top end of the 5023. Lift up the edge of the battery door and remove it.

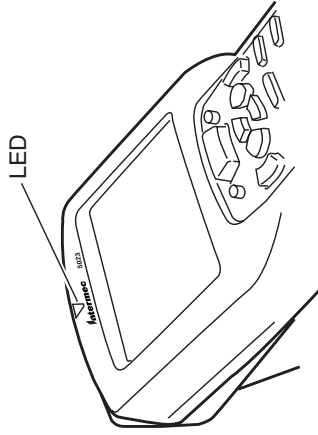


2. Place the main battery pack into the battery compartment with the contacts pointed toward the bottom end of the 5023.
3. Push the main battery pack down until it locks into the connectors on the bottom of the battery compartment.



4. Insert the top edge of the battery door into the top of the battery compartment. Push the door down to close it over the compartment.
5. Push the battery door latch down and slide it toward the bottom end of the 5023 to lock the door in place.

The 5023 initializes after you install a charged main battery pack. The green LED above the screen flashes until initialization is complete.



5023G010.eps

About the Bridge Battery

The 5023 comes with a rechargeable bridge battery that maintains the contents of RAM while the main battery pack is being replaced. For more information about the bridge battery, see the *5023 Data Collection PC User's Manual* (Part No. 070698).

IMPORTANT: The 5023 is shipped with a discharged bridge battery. Do not install applications on the 5023 until the bridge battery is fully charged.

- The bridge battery recharges from the main battery pack or recharges from the AC power source. Wait until the bridge battery is fully charged before proceeding to the next section. It takes 72 hours at room temperature to charge a discharged bridge battery.



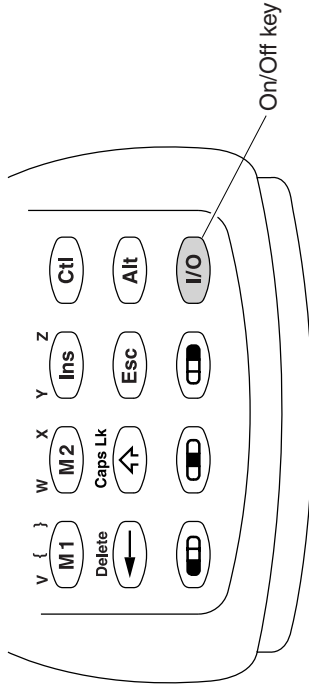
Note: You should always keep a charged main battery pack installed in the 5023 to maximize the life of the bridge battery.

3 Turning On the 5023 and Verifying Operation

This section explains how to turn on the 5023 and scan a test bar code to verify operation.

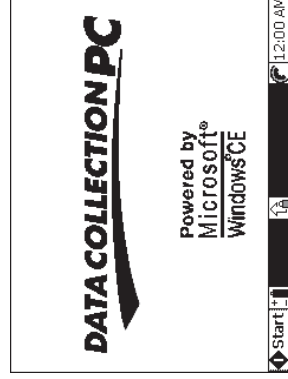
To turn on the 5023 and scan a bar code

1. Press the yellow  key in the lower right corner of the keypad.

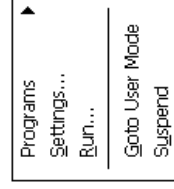


502G013.eps

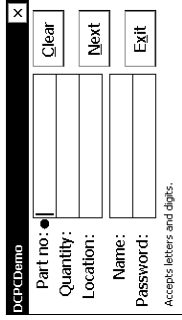
The 5023 desktop appears.



2. Press  to open the Start menu.



- Press **▼** to select Programs, then press **▶** to select DCPC Demo, and press **⏎** (Enter). The DCPC Demo screen appears.



- Hold the 5023 at a slight angle a few inches from the Test Bar Code, with the laser scan window pointing toward the bar code.

Scan the Test Bar Code by pulling the trigger on the handle, or by pushing the Scan button on the keypad. Direct the beam so that it falls across all bars in the bar code label.

Test Bar Code



12345

- After successfully reading the label, the 5023 emits a high beep and the green LED lights for about a second.
- To check that the 5023 decoded the bar code correctly, make sure 12345 appears in the Part Number field.
- Press **⏎** to select Exit and press **⏎** to exit DCPC Demo.

The 5023 is now ready to configure and connect to your RF network. You can use the Fast Config application to quickly set up general network parameters. For more information, see the *5023 Data Collection PC User's Manual*.

Specifications

Physical Dimensions

Width:	10.2 cm (4.0 in) at the screen 7.0 cm (2.75 in) at the handle
Length:	22.9 cm (9.0 in)
Depth:	7.6 cm (3.0 in) at the scan module 9.4 cm (7.63 in) at the handle
Weight:	952 g (29.8 oz)

Power Specifications

Operating:	Rechargeable lithium-ion 1500 mAh battery pack
Memory Backup:	Rechargeable lithium manganese dioxide 90 mAh bridge battery

Electrical Specifications

Electrical Rating: **⚡** 7.4 to 12V; 750mA peak

Temperature and Environmental Specifications

Operating Temperature:	-20°C to +50°C	-4°F to +122°F
Storage Temperature		
less than 2 weeks:	-20°C to +60°C	-4°F to +140°F
longer than 2 weeks:	-20°C to +45°C	-4°F to +113°F
Relative Humidity:	0 to 95% non-condensing	

Accessories

- Z2400 Battery Charger
- D5020 Communications Dock
- L5020 Serial Communications Adapter

For more information, see your Intermec sales representative.

Where to Find Other Information

For more information on using the 5023, please see

- the *5023 Data Collection PC User's Manual* (Part No. 070698).
- the Intermec Web site at www.intermec.com.

Part No. 070505-001



070505-001