

SOFTWARE RELEASE NOTES

For

TE 2000™ Version 8.30

For CN3 WM5 Computers

1. VERSION INFORMATION	2
2. INSTALLATION NOTES.....	2
TO INSTALL TE2000	2
LICENSING.....	3
3. NEW FUNCTIONALITY AVAILABLE IN VERSION 8.30.....	4
SUPPORT FOR THE SPEECH.....	4
SUPPORT FOR THE IP30 RFID READER.....	4
SUPPORT FOR THE RPC (REMOTE PROCEDURE CALLS).....	4
NEW MENU OPTIONS/SUPPORT	4
SUPPORT FOR NEW FONTS.....	4
SUPPORT FOR LICENSING AND ELECTRONIC FULFILLMENT	5
SUPPORT FOR “INTERMEC UPDATE”	5
4. ISSUES FIXED IN THIS VERSION	5
COMMANDS.....	5
USER INTERFACE UPDATES	5
CONFIGURATION UPDATES.....	6
KEYBOARD/SIP	6
OPERATIONAL	6
5. KNOWN ISSUES	6

1. Version Information

This release of TE 2000 operates on CN3 mobile computers running WM5. Version 8.30 provides updates to TE 2000 V8.25, the prior major release for CN3 computers running WM5. New features and fixes included in this release are noted later in this document.. Please reference the TE 2000 Programmer's for additional information on features and use of TE 2000.

Below is the minimum version of OS, SSPB that should be used with this version of TE 2000. V8.30 was also tested with SmartSystems Foundation.

TE2000	Device	Operating System	Operating System Version	SSPB	IVA	SmartSystem Foundation
8.30.01.0118	CN3	Windows Mobile 5.0	3.25.15.0141 Premium	5.50.23.0362	5.03.59.2363	3.41.03.0659

2. Installation Notes

To Install TE2000

You may install TE2000 onto your CN3 using one of the following methods:

SmartSystems Foundation – This method is a good option when installing TE2000 on multiple CN3 computers. This option requires a PC running SmartSystems Foundation. You may download a free version of SmartSystems Foundation from Intermec's web site at:

- http://home.intermec.com/eprise/main/GSS/Service/Content/Downloads/Show_DownloadSearchResults?Product=SMARTSYSTEMS

Download TE2000 from the Intermec downloads site to your PC after you have installed SmartSystems Foundation. TE2000 will appear in the SmartSystems Console. You may then use any of the supported installation methods including dragging the ITE client and dropping it onto the target computer to install TE2000 on your CN3

For the following methods please download the TE2000 application from the Intermec downloads web site <http://www.intermec.com/support/downloads/index.aspx>. You will have a SmartSystem bundle which you then need to extract onto your PC. After running the self extracting archive you will have the following folder created on your PC

C:\Program Files\Intermec\SmartSystem\ss_lib\software\TE2000_CN3_8.30.01.0118. From this folder you need to copy the following files syvox_speech_client.cab, grammars.cab and te_cn3.cab.

- SD Card Copy the syvox_speech_client.cab, grammars.cab and te_cn3.cab files on to the SD Card. Install the SD Card into the CN3 terminal and then run the syvox_speech_client.cab followed by the grammars.cab and then finally the te_cn3.cab.
- ActiveSync Copy the syvox_speech_client.cab, grammars.cab and te_cn3.cab files to the root directory of the CN3 terminal. Then run the syvox_speech_client.cab followed by the grammars.cab and then finally the te_cn3.cab.
- Avalanche create an ava package which contains the syvox_speech_client.cab, grammars.cab and te_cn3.cab files and then deploy this package to the CN3 terminals.

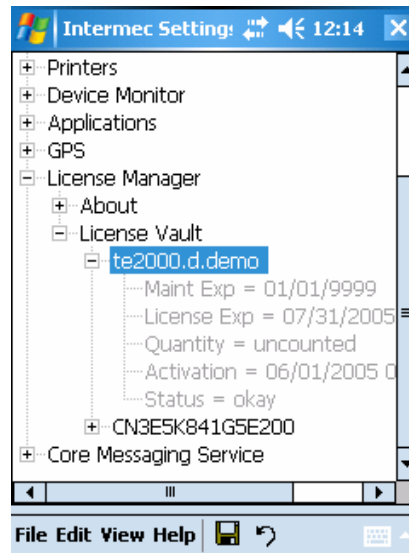
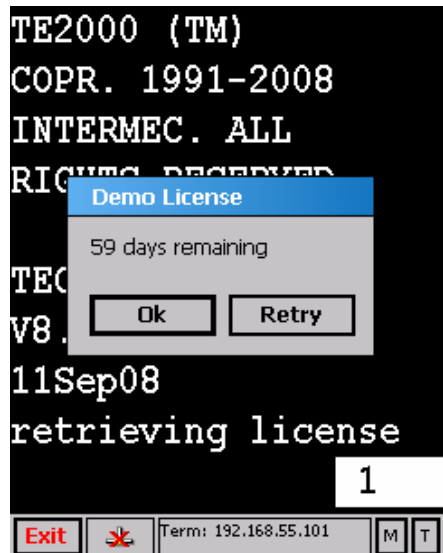
Licensing

TE 2000 8.30 may require an activation or maintenance license to operate in full featured mode.

- If maintenance has not been purchased, a new license may be required to run this version of TE 2000.

TE 2000 will run in a Demo mode for 60 days if your device does not contain a proper factory license or activation license or maintenance license. Demo mode allows you to operate the device for 60 days in “full feature”. After 60 days, the device will move to nag mode.

Licenses are available for purchase through your Intermec representative.



3. New Functionality Available in Version 8.30

The below lists contains the new features since 8.28.

Support for the Speech

Added supports for text to speech as well as speech recognition. There is a new extended command #X described in detail in the TE2000 programmer's reference manual to support speech.

Support for the IP30 RFID Reader

Added supports for a local connection via Bluetooth or USB to an IP30 RFID Reader. The IP30 can be used to read or write RFID tags. The IP30 supports IS06B as well EPC class 1 Gen 2 tags.

Support for the RPC (Remote Procedure Calls)

Added support for remote procedure calls from third party clients to the TE2000 application. The third party client can connect to the TE 2000 application and then request that all of the TE 2000 screens be sent to them in an XML format. The third party client can also interact back with the TE 2000 application by sending keys to it. For additional information see appendix B of the TE 2000 programmer's reference manual.

New Menu Options/Support

- Menu option which when enabled will allow support for ignoring Data logic extended commands.
- Menu option for encoded save. Previously the TE2000 application was not passing a + sign if it was set as the postamble for a barcode. With this menu option set it now will.
- TE2000 now supports a setting to enable/disable TE2000 from starting at boot time. This setting is only available in the Intermec Settings of TE2000.
- TE2000 now supports displaying an error message when you scan a barcode which is longer than the input field. This option can be enabled/disabled by setting the scan lengtherr configuration.
- Menu option which when enabled will look for a remote connection to an IP30 RFID reader
- Menu option to view speech serial number
- Menu option to enter speech license key
- Menu option to enter listen timeout (default 120 seconds)
- TE2000 toolbar option for pausing and restarting speech. Look under toolbar opts for adding this information to the TE2000 toolbar.
- TE2000 now support displaying time of day in the toolbar. Look under toolbar opts for adding this information to the TE2000 toolbar.
- Added key-alive option for 5250 emulation. When this is set a defined key will be returned to the AS400 at the select time interval. This will keep the AS400 from closing the session due to inactivity from the terminal.

Support for New Fonts

- Added Turkish fonts
- Added Cyrillic fonts for code page 1251
- Added Arabic fonts code page 1256
- Full support for UTF8 characters

Support for Licensing and Electronic Fulfillment

Intermec has updated its licensing technology to support the electronic distribution of TE 2000 and other software products. This means that TE 2000 is now distributed electronically via Intermec's website. Software may still be ordered on CD-ROM for back-up purposes. TE 2000 versions ordered as part of a preferred computer configuration are activated at the factory. See the licensing information above for additional information on license activation.

- Download new versions from www.intermec.com/SWdownloads
 - No more waiting for the CD to ship
 - Make sure you get the latest version of software
- Get a Fully Functional 60-Day TE 2000 Demo
 - After 60 days, Nag screens appear (just like v8.28 demo versions)
- Order a license to activate software
 - Demo SW & Live SW are one & the SAME (no longer different executables)
 - License converts demo version to live version, eliminates Nag screens
 - License delivered via e-mail
 - In most cases, delivered within 1 business day of order being entered
 - **IMPORTANT: Order MUST include valid e-mail address**

Support for "Intermec Update"

"Intermec Update" is a new service that delivers the latest software updates & patches for Intermec products as soon as they become available. This service is similar to "Windows Update" which provides updates for the Microsoft Windows OS. Using version 3.20 of SmartSystems Foundation, administrators can receive Intermec Update notifications and download updates for registered Intermec products directly to their SmartSystems desktop.

- Administrators are only notified of updates for their registered products – they aren't bothered with information on products they don't use
- Administrators can review notifications and reject updates not applicable to them. Accepted updates are deposited into the Software Vault for easy distribution to devices
- As new devices are introduced, administrators can perform an on-demand "check for updates" to see if a more current version of software is available for the device
- Administrators control when and if updates are distributed to the Intermec devices that they manage

CN3 computers running WM5 version 3.25.15.0141 Premium with SSPB 5.50.23.0362 or later may be registered for use with Intermec Update, so that administrators can be notified of future TE 2000 updates for use with the CN3.

4. Issues Fixed In This Version

Commands

Media Copy command added support for setting the RS232 baud rate, parity, data bits, stop bits and flow control for the media copy command.

User Interface Updates

Resolved an issue where the display was not being updated correctly if the first location of the screen was set to a NULL and the user had selected the Turkish code page.

Resolved an issue where the prompt session start autologin command was being displayed even though the session which lost its connection was not the foreground

session. The results of the connection lost were inadvertent parsing autologin messages could get displayed onto the users screen.

Configuration Updates

User could not select the TE2000 print device from Intermecc Settings.

Fixed an issue where the %S wildcard was off by one digit. If the serial number of the device was 27390600023 then TE would report that serial number with a leading 0 at the front of it. Removed the leading zero and now we are one to one support for the device serial number for the %s wildcard.

Fixed an issue where if the user was attempting to use wildcards and instead of using the uppercase value of the declared wildcard then it would not been seen as a wildcard value. No longer are we case sensitive to the wildcards for device names and the answerback string.

Fixed an issue where if the user selects ANSI mode in Intermecc settings then they can only select 7 bit data mode and not 8 bit data mode since ANSI only supports 7 bit mode.

Fixed an issue to allow for session names to be entered using upper and lowercase characters.

Corrected an issue where you could not disable device name alias for 3270 emulation.

Corrected a bug which locked up the terminal if the user had a remap.cfg file and they Where attempting to remap keys with a value above decimal 127.

Keyboard/SIP

The SIP Page up button in VT/ANSI emulation caused the terminal to scroll down and the SIP page down button did not do anything.

Hex key in 5250 emulation did nothing.

Corrected an issue where certain SIP shift states where not being updated.

Operational

Reduced the battery consumption of the TE2000 application in its idle state by 25%-35%.

The startup time of the TE2000 application was reduced by more then 50%.

5. Known Issues

- The TE2000 application may not obtain a license from the smart system server if it is started before SmartSystem detects the terminal on the network. The best method to ensure that your terminals obtain a license is to drag-and-drop the license from the SmartSystem server to the terminal directly.
- If you have multiple connections made then the TE2000 toolbar will show the current active connection in black instead of blue.

- If you attempt to use the extended command #W to write RFID tags to a reader which is connected to the TE2000 application remotely rather than locally then it will not succeed in writing the data to the RFID tags.
- If *parmsbysession* is selected for barcode configurations, the symbology ID returned will fail for tethered scanners.
- If multiple TE2000 sessions are configured, and invalid IP address or loss connection is seen in one session, the performance of the subsequent sessions will be seen.
- If you are currently in an active session with the AS400, and the AS400 loses power, then the TE2000 application will not auto connect once the AS400 resumes operation.
- If you attempt to upgrade the TE2000 application from 8.28 to 8.30.00.0057 while the TE2000 application is running, the installation will finish with a warm boot of the terminal as normal. After warm booting when you attempt to launch the TE2000 application it will fail reporting that it is missing components. Since you are required to update the Smart System client before running the TE2000 application the expected behavior is to exit out of the current running TE2000 application. Install the new Smart System client and then install the new TE2000 application.
- Hitting the left side button will launch the notes application even though the TE 2000 application is suppose to operate in lock down mode.
- Window dialog boxes that come up when executing the TE 2000 client are not sent to third party application which has connected to the TE 2000 application. For example the screen size selection dialog box would not get transferred to the third party client.
- If the third party client attaches to the TE 2000 application and fails to properly close it's connection then all subsequent screens sent to the TE 2000 application will slowed done by approximately 30 seconds.
- The BDU audio adapters do not work well with the combined OS/SSPB/TE2000 version. For best speech performance please use the production build audio adapters.