

SOFTWARE RELEASE NOTES

For

TE 2000™ Version 8.30

for CV60 Windows CE 4.2 Computers

1. VERSION INFORMATION	2
2. INSTALLATION NOTES.....	2
REQUIREMENTS	2
TO INSTALL TE 2000.....	3
LICENSING.....	3
3. NEW FUNCTIONALITY AVAILABLE IN VERSION 8.30.....	4
HYPERLINK SUPPORT.....	4
SSH SUPPORT.....	4
NEW MENU OPTIONS/SUPPORT	4
SUPPORT FOR NEW FONTS.....	4
SUPPORT FOR LICENSING AND ELECTRONIC FULFILLMENT	4
SUPPORT FOR “INTERMEC UPDATE”	6
4. ISSUES FIXED IN THIS VERSION	6
COMMANDS.....	6
USER INTERFACE UPDATES	6
CONFIGURATION UPDATES.....	7
KEYBOARD/SIP	7
5. KNOWN ISSUES	7

1. Version Information

This release of TE 2000 operates on CV60 mobile computers running Windows CE 4.2. Version 8.30 provides updates to TE 2000 v8.12, the prior major release for CV60 computers running Windows CE 4.2. New features and fixes included in this release are noted later in this document.. Please reference the TE 2000 Programmer's for additional information on features and use of TE 2000.

Below is the minimum version of OS, SSPB that should be used with this version of TE 2000. V8.30 was also tested with SmartSystems Foundation.

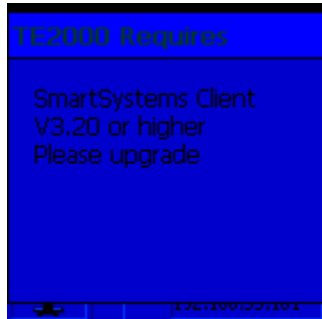
TE2000	Device	Operating System	Operating System Version	IVA	SmartSystem Foundation	SSRefClient
8.30.00.0053	CV60	Windows CE 4.2	2.01.00.0151	4.03.38.1216	3.21.02.0394 with patch 3.22.02.0403	3.30.00.0386

2. Installation Notes

Requirements

TE 2000 v8.30 **requires** SmartSystems Client v3.20.00.0256 or greater. This SmartSystems client is not included in the recommended CV60 OS/SSPB. This new reference client can be obtained from the Intermec website by downloading the latest SSRefcleint version for the CV60

If TE 2000 detects an earlier version of the SmartSystems Reference Client, an error dialog will display:



To Install TE 2000

The download posted on the website is a SmartSystems Bundle. The installation will install into a SmartSystems Console to allow for easy “drag-and-drop” installation onto your discovered devices. You may also install TE 2000 via other methods such as SD card or ActiveSync.

A free version of SmartSystems Foundation is available for download at:

http://home.intermec.com/eprise/main/GSS/Service/Content/Downloads/Show_DownloadSearchResults?Product=SMARTSYSTEMS

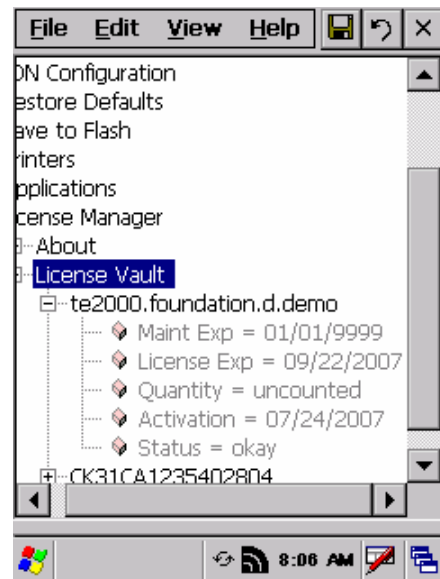
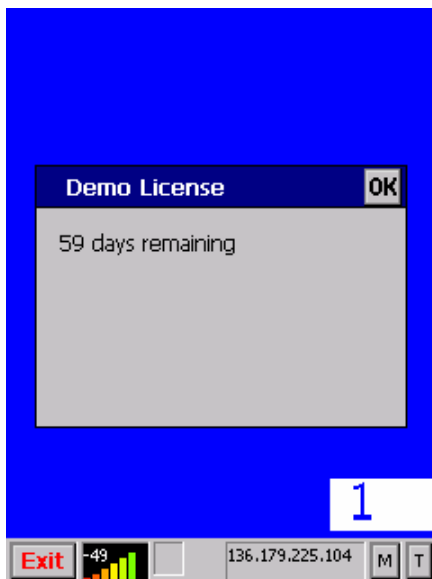
Licensing

TE 2000 8.30 may require an activation or maintenance license to operate in full featured mode.

- If your device was manufactured after January 28, 2008, and has TE 2000 factory load configuration, then your device is licensed to run TE 2000 in release.
- If your device was manufactured before January 28, 2008, and has a TE 2000 factory load configuration, then you device will need a Maintenance License to run in release mode.
- If maintenance has not been purchased, a new license may be required to run this version of TE 2000.

TE 2000 will run in a Demo mode for 60 days if your device does not contain a proper factory license or activation license or maintenance license. Demo mode allows you to operate the device for 60 days in “full feature”. After 60 days, the device will move to nag mode.

Licenses are available for purchase through your Intermec representative.



3. New Functionality Available in Version 8.30

The below lists contains the new features since 8.12.

Hyperlink support

When the user taps on the specified url the web page is rendered on the screen with a button in the upper right hand corner of the display to allow the user to close the webpage and then restore them back to the standard TE2000 screen.

SSH Support

Added support for SSH version 2 single session. This is done by using the Diffie-Hellman group exchange sha1 with a key host exchange encryption using RSA. The client host encryption is AES128-CBC, 3DES-CBC. Client host MAC algorithm uses HMAC-MD5. Authentication is done via passwords which you are instructed to enter once you nominate a session to be SSH be changing the port from 23 to 22.

New Menu Options/Support

- Menu option which when enable will allow support for ignoring Data logic extended commands.
- Menu option for encoded save. Previously the TE2000 application was not passing a + sign if it was set as the postamble for a barcode. With this menu option set it now will.
- TE2000 now supports a setting to enable/disable TE2000 from starting at boot time. This setting is only available in the Intermec Settings of TE2000.
- TE2000 now supports displaying an error message when you scan a barcode which is longer then the input field. This option can be enabled/disabled by setting the scan lengtherr configuration.
- TE2000 now support displaying time of day in the toolbar. Look under toolbar opts for adding this information to the TE2000 toolbar.

Support for New Fonts

- Added Turkish fonts
- Added Cyrillic fonts for code page 1251
- Full support for UTF8 characters

Support for Licensing and Electronic Fulfillment

Intermec has updated its licensing technology to support the electronic distribution of TE 2000 and other software products. This means that TE 2000 is now distributed electronically via Intermec's website. Software may still be ordered on CD-ROM for back-up purposes. TE 2000 versions ordered as part of a preferred computer configuration are activated at the factory. See the licensing information above for additional information on license activation.

- Download new versions from www.intermec.com/SWdownloads
 - No more waiting for the CD to ship
 - Make sure you get the latest version of software
- Get a Fully Functional 60-Day TE 2000 Demo
 - After 60 days, Nag screens appear (just like v8.28 demo versions)
- Order a license to activate software
 - Demo SW & Live SW are one & the SAME (no longer different executables)

- License converts demo version to live version, eliminates Nag screens
- License delivered via e-mail
 - In most cases, delivered within 1 business day of order being entered
 - IMPORTANT: Order MUST include valid e-mail address

Support for “Intermec Update”

“Intermec Update” is a new service that delivers the latest software updates & patches for Intermec products as soon as they become available. This service is similar to “Windows Update” which provides updates for the Microsoft Windows OS. Using version 3.20 of SmartSystems Foundation, administrators can receive Intermec Update notifications and download updates for registered Intermec products directly to their SmartSystems desktop.

- Administrators are only notified of updates for their registered products – they aren’t bothered with information on products they don’t use
- Administrators can review notifications and reject updates not applicable to them. Accepted updates are deposited into the Software Vault for easy distribution to devices
- As new devices are introduced, administrators can perform an on-demand “check for updates” to see if a more current version of software is available for the device
- Administrators control when and if updates are distributed to the Intermec devices that they manage

CV60 computers running Windows CE OS version 2.01.00.0151 with IVA version 4.03.38.1216 or later may be registered for use with Intermec Update, so that administrators can be notified of future TE 2000 updates for use with the CV60.

4. Issues Fixed In This Version

Commands

Media Copy command added support for setting the RS232 baud rate, parity, data bits, stop bits and flow control for the media copy command.

User Interface Updates

Resolved an issue where the display was not being updated correctly if the first location of the screen was set to a NULL and the user had selected the Turkish code page.

Resolved an issue where the prompt session start autologin command was being displayed even though the session which lost its connection was not the foreground session. The results of the connection lost were inadvertent parsing autologin messages could get displayed onto the users screen.

Fixed an issue where the blue light was not being restored to the current condition if the terminal was suspended.

Blue light use to flicker rather than staying on constantly when connected to the host.

User was not able to toggle the SIP up or down when the username/password dialog box for signing into an SSH connection was visible.

Configuration Updates

User could not select the TE2000 print device from Intermecc Settings.

Fixed an issue where the %S wildcard was off by one digit. If the serial number of the device was 27390600023 then TE would report that serial number with a leading 0 at the front of it. Removed the leading zero and now we are one to one support for the device serial number for the %s wildcard.

Fixed an issue where if the user was attempting to use wildcards and instead of using the uppercase value of the declared wildcard then it would not been seen as a wildcard value. No longer are we case sensitive to the wildcards for device names and the answerback string.

Fixed an issue where if the user selects ANSI mode in Intermecc settings then they can only select 7 bit data mode and not 8 bit data mode since ANSI only supports 7 bit mode.

Fixed an issue to allow for session names to be entered using upper and lowercase characters.

Keyboard/SIP

The SIP Page up button in VT/ANSI emulation caused the terminal to scroll down and the SIP page down button did not do anything.

Hex key in 5250 emulation did nothing.

5. Known Issues

- If you startup the TE2000 application with the SIP down and then attempt to toggle the SIP up the first time it will not resize the display correctly. You need to toggle the SIP down and then back up once again for the TE window to get resized correctly.
- The TE2000 application may not obtain a license from the smart system server if it is started before SmartSystem detects the terminal on the network. The best method to ensure that your terminals obtain a license is to drag-and-drop the license from the SmartSystem server to the terminal directly.
- There is no ability to automate the SSH authorizations at this time so you must enter the username/password into the dialog box each time or edit the te_settings.ini file by hand to specify the username/password.
- If you setup a custom color for either the foreground or background color and it is not saved in the te_settings.ini file, and you lose your connection to the initial host; when you make a new connection to a host you will lose your custom selection of the foreground/background colors.
- If you have multiple connections made then the TE2000 toolbar will show the current active connection in black instead of blue.

- If you attempt to use the extended command #W to write RFID tags to a reader which is connected to the TE2000 application remotely rather than locally then it will not succeed in writing the data to the RFID tags.
- If you hit the shift or control keys on the SIP rather than the external keyboard then their state will not be updated on the TE2000 toolbar if this option is selected to be displayed on the toolbar.
- If *parmsbysession* is selected for barcode configurations, the symbology ID returned will fail for tethered scanners.
- If multiple TE2000 sessions are configured, and invalid IP address or loss connection is seen in one session, the performance of the subsequent sessions will be seen.
- If you are currently in an active session with the AS400, and the AS400 loses power, then the TE2000 application will not auto connect once the AS400 resumes operation.