



Software Release Notes

PrintSet 5.50

For Honeywell and Intermec bar code label and receipt printers

Version 5.05.00.0007

November 2015

Overview

PrintSet 5 is configuration software for Intermec and Honeywell bar code label printers.

This document describes the new and improved features in PrintSet 5.5.0 but is not meant as a "how-to" guide. For details on the features of PrintSet 5 see the online help included with the software.

Supported Hardware

- Intermec PC43d, PC43t, PC23d desktop printers
- Intermec PM43, PM43c, PM23c and PM42 industrial printers
- Intermec PD43, PD43c industrial printers
- Honeywell PC42t desktop printer
- Intermec PR2 and PR3 durable mobile receipt printers

Please refer to the online help or the printer user manual for additional information on the features and use of PrintSet with your printers.

Version 5.50 Key Features

Released November 2015

New Functionality

The following new features have been added in this release:

New Interface

PrintSet 5.5 features a brand-new design. Instead of the custom per-feature forms interface of earlier versions, this version now uses a tree view to display all configuration settings in the main pane.

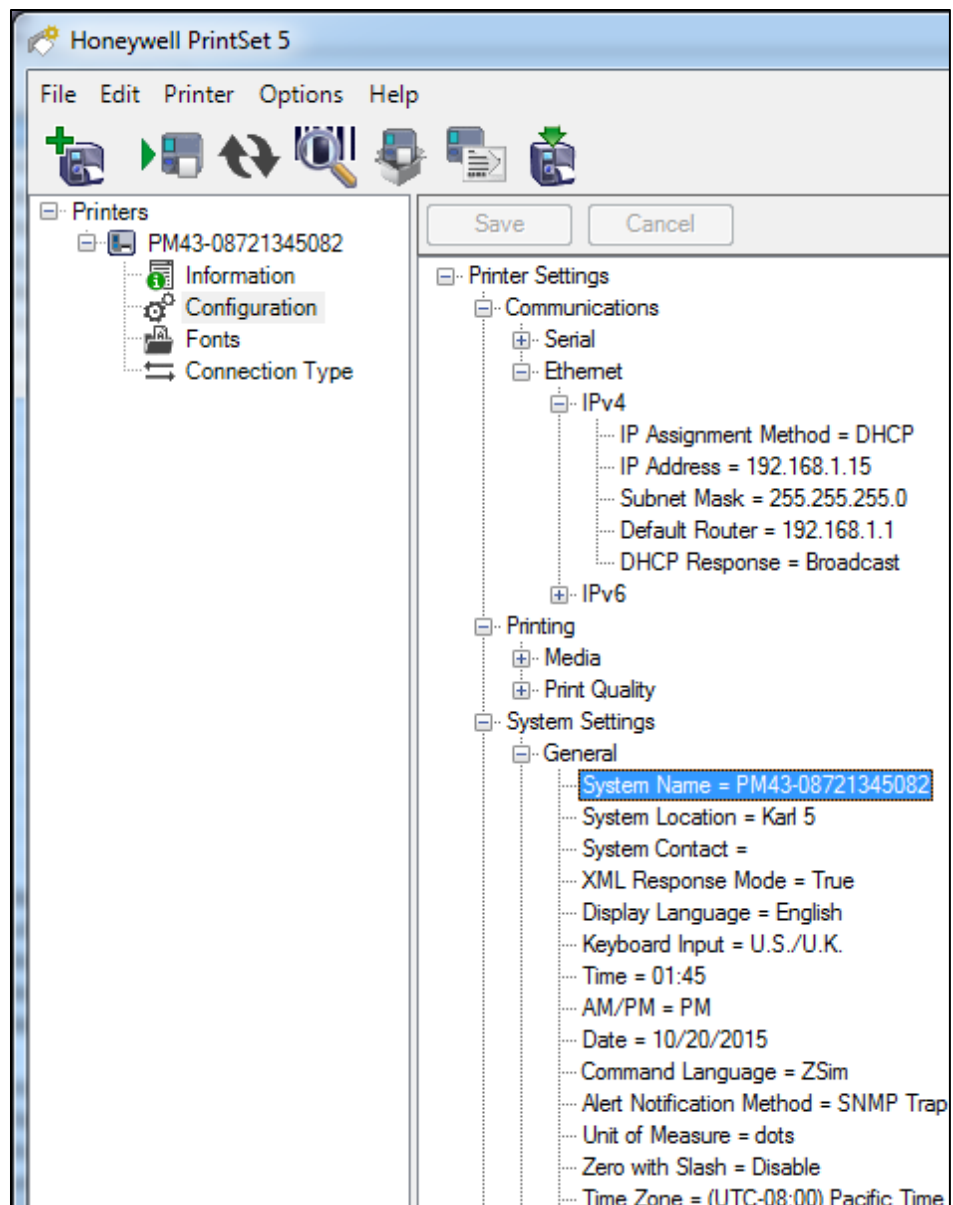
Extensive research with partners and customers revealed that the previous design had become cumbersome as more and more new capabilities are added to our printers, forcing users to follow a time-consuming process of opening and closing many forms to complete tasks.

By contrast, the new tree-view design features a clean, simple interface and there are no forms to open. Simply drill into each configuration section desired, change the settings and then go to the next. When finished, simply press the **Apply** button (second from left, a green arrow point to a printer) and optionally save the settings on your PC (the **Save** button).

Settings with discrete values (such as IP Assignment Method) offer a drop-down list of choices.

Wizards continue to simplify infrequently used or complex tasks.

In addition to the dynamic tree UI, you may now see basic printer information by



clicking the *Information* node directly under the printer name.

The other major advantage of this new dynamic tree UI is that as new firmware features are added, PrintSet can automatically support them because the configuration of the printer automatically is refreshed each time you connect. Thus, *all* configuration features of your printers are available to you all of the time –you don't have to wait for PrintSet to be updated to gain access to configure new features.

Language-specific Settings Now Configurable

Another benefit of the new dynamic tree UI, combined with a new v9 firmware moving language-specific settings to the main configuration system, is that language-specific settings can now be configured from PrintSet. You no longer have to maintain separate ZSIM.CFG, IPL.CFG, or ESIM.CFG files (DSim continues to require a DSIM.CFG file for its settings). Settings formerly stored in these files are now found either in the main printer configuration fields or in a Settings / Languages node of the dynamic tree.

Support for PM42 Industrial Printer

PrintSet now supports the PM42 industrial printer.

IPL Font Aliasing Support Improvements

IPL font aliasing from PrintSet now supports point sizes down to 1.

X-OFFSET and Y-OFFSET attributes are now supported.

POINT, HEIGHT and WIDTH can now be supported in the same file.

Removed Functionality

Ethernet Wizard

The Ethernet Setup Wizard has been removed. This little-used feature replaces a very few fields and the switch to the dynamic tree UI made it unnecessary.

Fixed Issues

DriverAutomationLibrary Error Fixed

Occasionally users would encounter the message “Failed to apply software license for DriverAutomationLibrary”.

This happens if the user attempts to connect to a printer via USB but InterDriver is not yet installed. Since all USB devices require a driver to function, installing InterDriver is required to use PrintSet with printers.

The message more accurately states that InterDriver is not installed.

Other Fixed Issues

The following table lists other issues fixed in this version.

Summary
Bluetooth Device Name is not reverted to Default Bluetooth Device Name in PR2/3
EWR 16209 - ">" Character not working on PM43 WPAII-PSK Pre-Shared key
Printer could not be renamed. Unhandled Exception error message is shown

Summary
Unhandled Exception error message is shown when Right Click shown Added Printer at Main Window
No warning message for invalid IP address
Printset crashes when receiving an invalid value for Display->Pin
The copyright information is inconsistent between SW installation License screen and Help
An error message pops up when add printer via Serial connection in PrintSet5
Printset still display invalid value after trying to apply it into printer
Wireless Setup Wizard issue
Printset multiple instances running problem
Added IPL fonts from resident/downloaded fonts are not displayed as "Pending"
"Font Name" field should be read-only on "Add font" UI
Add printer error for PR2/3 printer
PR2/3: PrintSet show Unhandled Exception when receiving invalid value for Low Battery setting

Limitations

The following issues will be addressed in a future version of PrintSet.

Help File in Internet Explorer 10, 11 and Microsoft Edge

The HTML help system for PrintSet 5.5 will not display correctly in these Microsoft browsers.

Network printers not found from DSim

If DSim is the current language, PrintSet cannot find network printers with “IPv4 Broadcast” scan type.

Version 5.40 Key Features

Note: PrintSet 5.4 was released in February 2015. The PR2 and PR3 mobile printers were inadvertently left off the list of supported printers in the original release notes document. This updated release notes document dated May, 2015 corrects this oversight. There are no changes to PrintSet 5.4 itself.

New Functionality

The following new features have been added in this release:

Rebrand to Honeywell

The software is now called Honeywell PrintSet 5.

Support for Honeywell brand printers

PrintSet will now support Honeywell branded printers as well as Intermec branded printers.

About Upgrading PrintSet 5

You should check for periodic updates to PrintSet 5. Updated versions can include bug fixes or additional features that may be useful.

During installation, if PrintSet 5 detects an earlier version of PrintSet 5, it will automatically uninstall it before installing the current version.

To upgrade PrintSet

1. Visit the Intermec website (<http://www.intermec.com>) and then navigate to your printer product page.
2. Click the **Downloads** tab. In the Device Configurations table, download PrintSet 5.
3. Use the installation wizard to install PrintSet 5.