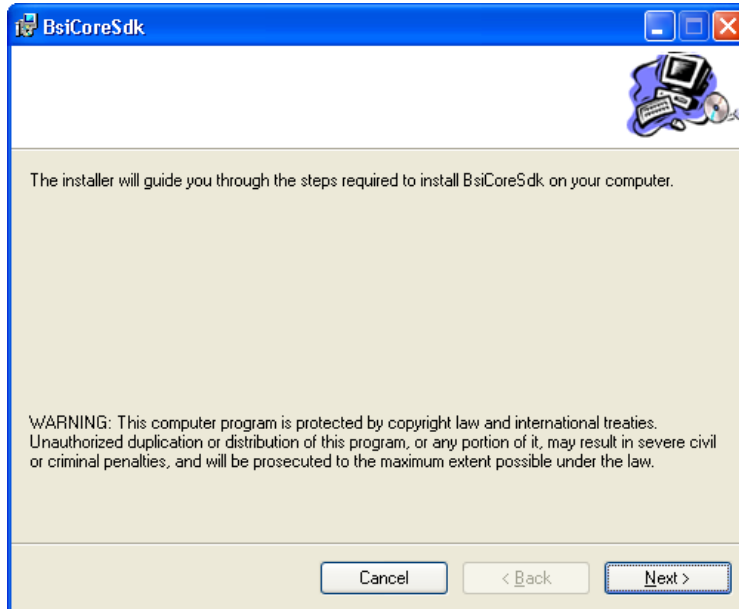
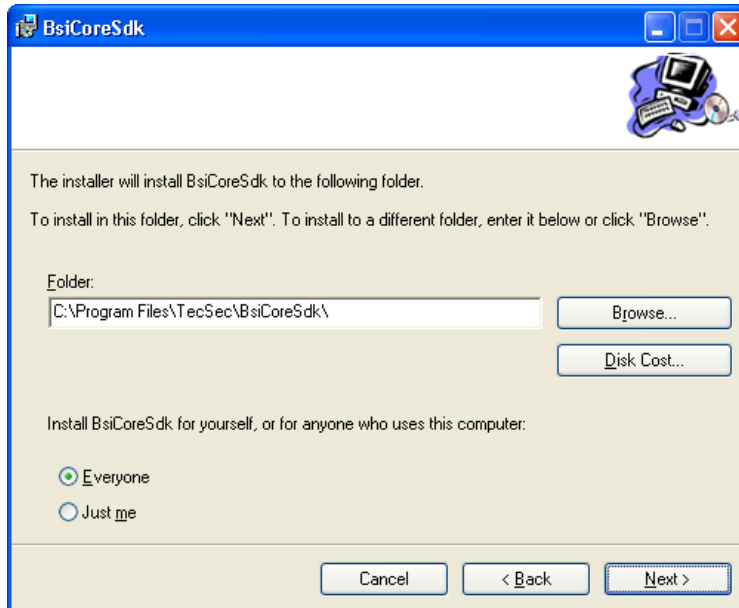


Intermec CAC Middleware Installer Instructions

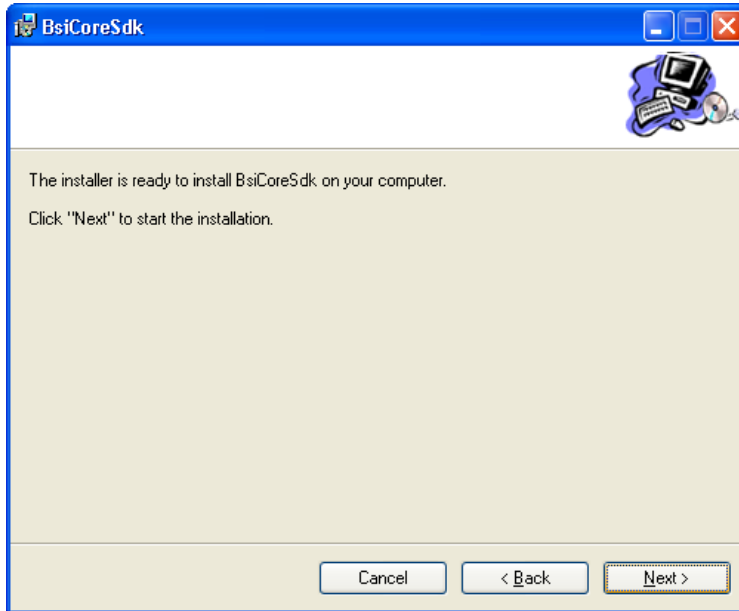
- 1) 00002789_IntermecCACMiddlewareInstaller.msi installs onto a Desktop or Laptop PC
- 2) Double Click - 00002789_IntermecCACMiddlewareInstaller.msi
- 3) Click next



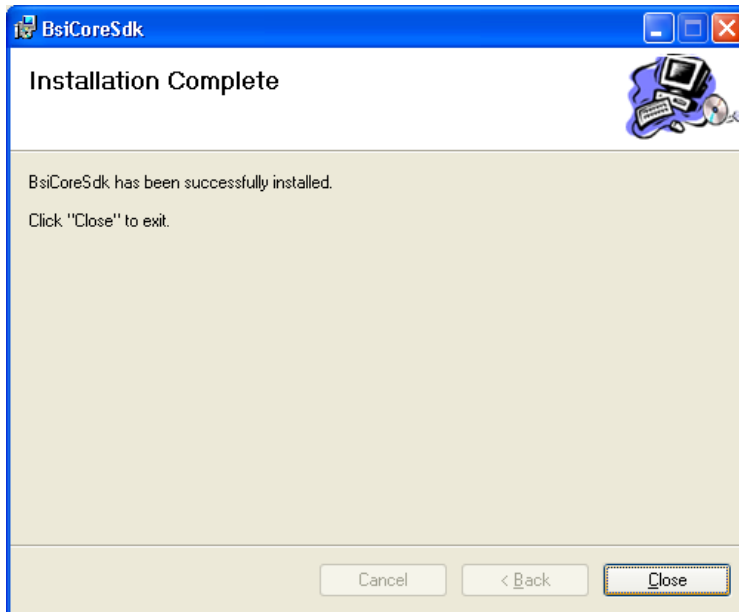
- 4) Click Next



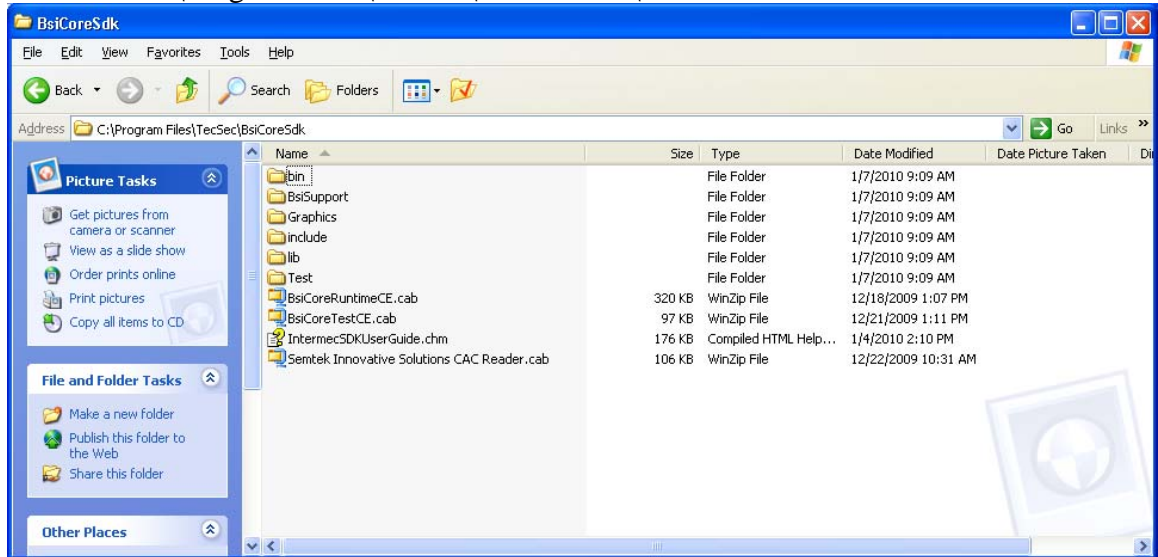
5) Click Next



6) Click Close



7) Browse to C:\Program Files\TecSec\BsiCoreSdk\



8) Copy following file to the Intermec Hand Held Terminal (HHT) via ActiveSync or SD Card to the HHT's c:\My Documents Folder.

Semtek Innovative Solutions CAC Reader.cab (Driver)

BsiCoreRuntimeCE.cab (Middleware)

BsiCoreTestCE.cab (Sample and Test applications)

9) Double Click to run each Cab file in order

1: Semtek Innovative Solutions CAC Reader.cab

2:BsiCoreRuntimeCE.cab

3:BsiCoreRunTestCE.cab

Reboot the HHT by pressing and holding the i/o button

10) Two Card Test applications have been installed onto the HHT CEReaders and CSP Test1. A file Directory was created on the HHT c:\Program File\BsiCoreTest.

11) On the HHT device browse to C:\Windows\Startup directory. Remove DodBanner.exe application from this directory if it exists and warm boot the device by pressing and holding the i/o button

12) A sample Banner/CAC Logon Application BsiBanner.cab is located in the C:\Program File\BsiCoreTest directory. To run this application copy the file to the C:\Windows\Startup directory and warm boot the device by pressing and holding the i/o button