

SOFTWARE RELEASE NOTES for Intermec Terminal Emulator Version 1.37

1.	VERSION INFORMATION.....	1
2.	INSTALLATION NOTES	3
	TO INSTALL ITE.....	3
	LICENSING.....	4
3.	NEW FEATURES.....	6
4.	ISSUES FIXED IN THIS VERSION	6
5.	KNOWN ISSUES.....	7
	KEYBOARDS	7
	RPC.....	7
	SCANNING	7
	SSH.....	7
	UDP+.....	8
	OUT OF RANGE MONITOR.....	8
	BLUE LIGHT.....	8

1. Version Information

This release of Intermec Terminal Emulator (ITE) operates on 70 Series, CK3A, CK3B, CK3R, CK3X, CK32, CK61, CV30, CN50, CN3, CS40 and CN4 Windows mobile computers. It also runs on the CV30 WinCE and CK61 WinCE computers. Support has also been added for the CV61 Windows 7 and WinXP computers as well as the CV41 WinCE Intermec and CV41 WES computers.

Intermec Terminal Emulator is the next generation of Intermec's popular terminal emulation client (previously known as TE 2000) which connects Intermec computers to host applications using 5250, 3270 and VT/ANSI emulation. ITE V1.37 is built on years of industry experience and expertise in TE 2000 and has been tested for optimal performance on the Intermec terminals in emulation environments such as warehouses. ITE supports 4 simultaneous host sessions, security, and complete data collection with Intermec scanning and RFID technologies. .

Please reference the ITE Programmer's reference manual for additional information on features and use of ITE.

Below is the minimum version of OS, SSPB and IVA that should be used with this version of ITE. The ITE application was also tested against the SmartSystems foundation version 4.50.00.0193.

Device	Operating System	Operating System Version	SSPB	IVA
CK3	Windows Mobile 6.1	3.45.26.0031	6.20.33.0472	5.04.70.2820
CK61	Windows Mobile 5.0	3.31.16.0043	5.50.32.0396	5.03.68.2387
CV30	Windows Mobile 5.0	3.30.14.0034	5.50.40.0364	5.03.59.2340
CK32	Windows Mobile 5.0	3.31.30.0010	5.50.34.0385	5.03.59.2350
CN3	Windows Mobile 5.0	3.26.15.0170	5.50.23.0362	5.03.59.2363
CN3	Windows Mobile 6.1	4.30.31.0014	7.00.36.0592	5.06.72.3208
CN4	Windows Mobile 6.1	4.41.32.0018	7.00.36.0555	5.06.72.3198
CK61	Windows CE5.0	3.31.16.0040	5.50.32.0396	5.03.68.2387
CV30	Windows CE5.0	3.30.14.0038	5.50.32.0396	5.03.68.2387

Device	Operating System	Operating System Version	Smart Systems reference client	Intermec Settings
70 Series	WM6.5	1.44.16.0059	4.60.00.0066	5.80.00.0112
CS40	WM6.5	1.61.16.0001	4.00.00.0178	5.70.00.0080
CN50	WM6.1	1.61.15.0015	3.48.07.0669	5.52.10.1197
CN50	WM6.5	1.70.21.0035	3.48.07.0669	5.52.10.1197
CV41	Windows CE6.0	1.10.02.0011	4.10.00.0175	5.70.00.0191
CV41	WES	1.00.00.0085	4.70.00.0152	5.90.00.0191
CV61	Windows7	1.00.00.0153	4.10.00.0260	5.70.00.0258
CV61	WinXP	1.00.00.0153	4.10.00.0260	5.70.00.0258
CK3X	WM 6.5	1.50.00.0928	4.10.00.0386	5.80.00.0034
CK3R	WM 6.5	1.50.00.0928	4.10.00.0836	5.80.00.0034

2. Installation Notes

To Install ITE

You may install ITE onto your Intermec terminal listed above using one of the following methods:

SmartSystems Foundation – This method is a good option when installing ITE on multiple computers. This option requires a PC running SmartSystems Foundation. You may download a free version of SmartSystems Foundation from Intermec's web site at:

- <http://www.intermec.com/products/smrtsysfoundation/index.aspx>

Download ITE from the Intermec downloads site to your PC after you have installed SmartSystems Foundation. ITE will appear in the SmartSystems Console. You may then use any of the supported installation methods including dragging the ITE client and dropping it onto the target computer.

For the following methods please download the ITE application from the Intermec downloads web site <http://www.intermec.com/products/ite/index.aspx>. You will have a SmartSystem bundle which you then need to extract onto your PC. After running the self-extracting archive you will have the following folder created on your PC

C:\Program Files\Intermec\SmartSystem\ss_lib\software\ITE_ARMV4I_1.37.07.1222

From this folder you need to copy

- ITE_CK60_CE_ARMV4I.cab file for the CK61 WinCE
- ITE_CV30_CE_ARMV4I.cab for the CV30 WinCE
- ITE_CV30_WM_ARMV4I.cab for the CV30 WM
- ITE_70Series_ARMV4I.cab for the 70 series computers
- ITE_Other_WM_ARMV4I for the CN3, CN4, CK32, CK61, CN50, CS40 or CK3 computers
- ITE_CV41_CE60_x86 for the CV41 CE computers
- ITEXP7Setup for the CV61 Windows7, CV61 WinXP and CV41 WES computers

- SD Card Copy the *.cab files on to the SD Card. Install the SD Card into the Intermec terminal and then run the cab file.
- ActiveSync Copy the *.cab files to the root directory of the Intermec terminal. Then run the cab file.
- Avalanche create an ava package which contains the *.cab file and then deploy this package to the Intermec terminal.

The ITE application is now installed in the Program Files\Intermec\ITE folder

For the CV41 after ITE has finished its installation you will need to manually reboot the device. This can be done by executing `reboot /w`. Any configuration files that ITE uses need to be placed into the `system\ITE\data` folder.

For the CV41 and CV61 computers by default the ITE application will not auto start when it is installed. To change this behavior use Intermec Settings to open the `Applications\Intermec Terminal Emulation` folder and then change the setting of no Auto-Start to enabled.

Note: If you put the incorrect cab file on to your computer then the ITE toolbar graphics will not be displayed correctly.

Licensing

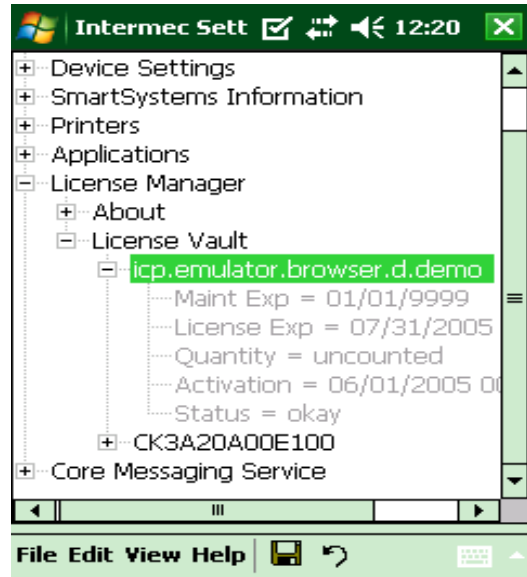
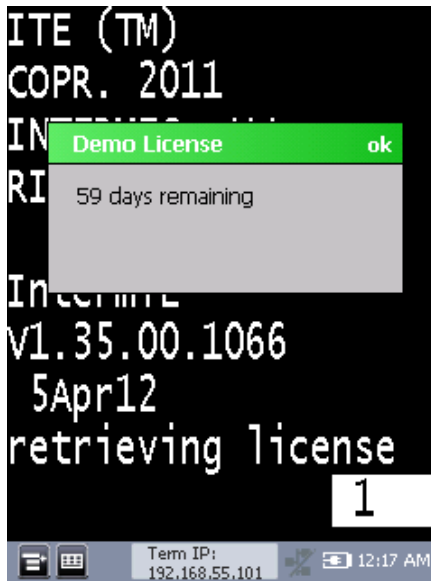
If ITE was not purchased pre-installed on your Intermec handheld, ITE will require activation to operate with full functionality beyond the evaluation period.

- If this version of ITE was delivered pre-installed on your Intermec mobile computer, then no activation is required.

The ITE V1.37 application has license build date of April 12th, 2012.

ITE will run in a Demo mode for 60 days if your device does not contain a proper factory license or activation license. Demo mode allows you to operate the device for 60 days in “full feature”. After 60 days, the device will move to nag mode.

Licenses are available for purchase through your Intermec representative or Intermec Reseller.



3. New Features

- KC121002-00030 Escape key definition can be modified to now send a Clear key rather than Reset.
- New menu option under 5250 protocol for displaying the shift in and shift out characters in 5250 emulation when using a double byte OS.
- New menu option under 5250 protocol for displaying Hiragana and Katakana characters as either two spaces or a single space.

4. Issues Fixed in this Version

- CPR120802-000088 Configuring ITE to not display the toolbar with a custom SIP. The custom SIP was failing to be displayed.
- CPR120813-000005 Exiting the ITE application without using the SIP then the SIP is not usable outside of the ITE application.
- CPR120820-000064 Switching between Intermec Browser and ITE causes ITE to run in a non-locked down state.
- CPR120817-000005 ITE was failing to display the SIP when Intermec Settings was launched from within ITE,
- CPR121004-000039 When launching ITE on a CV61 Windows XP operating system ITE does not have input focus and you needed to tap on the screen to gain focus.
- CPR120913-000056 When installing the ITE application on a CV61 Windows XP operating system the fonts (Lucida Console, Courier New, Courier New Bold) were getting deleted from the system and thus ITE would display all text in Italics as well as other applications that were attempting to use one of these fonts.
- CPR121004-000127 ITE when launched on a CV61 would display the hour glass rather than the normal cursor.
- CPR121010-000053 Exiting the ITE application on a CV61 sometimes would cause the ITE application to crash.
- CPR121024-000082 The alternate font button would change the fonts the first time, but subsequent attempts to change the font did not work.
- CPR121024-000155 ITE fails to read a double byte encoded barcode when using 5250 emulation.
- CPR121105-000044 Intermec Settings running slowly when launched from ITE.
- CPR121130-000062 High CPU usage for ITE when you launch Intermec Settings from within ITE.
- CPR121203-000055 ITE would crash if you attempted to update the applications configurations while the application was updating the ITE toolbar.
- CPR121109-000035 Launching ITE and then quickly tapping on the screen before ITE was fully started would cause the ITE application to crash.

- CPR121116-000055 CN50 with a GPRS radio would sometimes fail to make an initial connection. When this occurred ITE would need to be restarted to initiate the radio connection.
- CPR121024-000155 On a double byte OS the ITE application was failing to correctly read barcodes.
- SSH. If the host sends a carriage return without a linefeed then the carriage return would not get acted upon. This was causing screen data to be displayed incorrectly.
- CPR130122-000151 Snapshot preview was failing to display any image after upgrading to the released version of the MMRK.

5. Known Issues

Keyboards

- Hitting the control 1-5 keys does not send data to the host. The work around is to use the SIP to send these control values to the host.
- The CV61 will require you to install the SR12041601-KEY_CV61 in order to get the ITE emulation key values from the keyboard.
- The CK3R and CK3X numeric keypads physical keys for Prev Screen, Next Screen, Roll Down and Attention are not being sent from the OS to the ITE application correctly so these keys will fail in ITE application. Need to use the SIP to generate these keys.

RPC

- Windows dialog boxes are not sent from the ITE application to the attached client.
- If an attached client severs its ties to the ITE application rather than closing its connection, then performance of the ITE application will be vastly affected (approximately five second delays for all ensuing screen updates).
- If you use SendKeys function then all data will be sent to the ITE application as uppercase characters. There is no method to send lowercase characters.

Scanning

- The encode barcodes for Next screen, control X and Control 5 no longer work.
- When parmsbysession is enabled and you scan a computer identics 2 of 5 barcode then an = character is added to the beginning of the barcode as the barcode type character. The actual value is supposed to be a Z character and the = is supposed to be for a straight 2 of 5 barcode.
- When parmsbysession enabled EAN13 barcodes will not decode.
- The scanner fails to read data in to windows dialog boxes.

SSH

- If the user attempts to make an SSH connection and that connection fails for several hours (3-4) then the ITE toolbar will fail to be displayed or start to flicker. Also a scanner error can get displayed.

- SSH key authentication is not implemented. The user is required to make an SSH connection using password authentication.

UDP+

- Host fallback option using multiple sessions will sometimes cause the ITE application to crash. At this time it is best to not allow host fall backs for more than a single session.

Out of range monitor

- The out of range monitor dialog box is not shown on a CV61 running Windows 7. Only the text is displayed.
- On a CV61 Windows XP OS when the device goes out of range to the point where it loses its IP address the connection to the host is reset and the out of range monitor dialog is not shown.

Blue light

- On the CV61 with the Windows 7 operating system the blue light is not getting changed to indicate that ITE is making a valid connection to the host. Also asset messages about ITE's status are not getting sent to the SmartSystems console. This will be corrected in a future build of the SSRefclient for the CV61.